

Product datasheet

Anti-CD63 antibody ab68418

KO VALIDATED

★★★★★ [1 Abreviews](#) [105 References](#) [3 Images](#)

Overview

Product name	Anti-CD63 antibody
Description	Rabbit polyclonal to CD63
Host species	Rabbit
Tested applications	Suitable for: WB
Species reactivity	Reacts with: Human
Immunogen	Synthetic peptide corresponding to Human CD63 aa 100-200 conjugated to keyhole limpet haemocyanin. (Peptide available as ab93074)
Positive control	This antibody gave a positive signal in Human platelet and HepG2 whole cell lysates.
General notes	<p>The Life Science industry has been in the grips of a reproducibility crisis for a number of years. Abcam is leading the way in addressing this with our range of recombinant monoclonal antibodies and knockout edited cell lines for gold-standard validation. Please check that this product meets your needs before purchasing.</p> <p>If you have any questions, special requirements or concerns, please send us an inquiry and/or contact our Support team ahead of purchase. Recommended alternatives for this product can be found below, along with publications, customer reviews and Q&As</p>

Properties

Form	Liquid
Storage instructions	Shipped at 4°C. Store at +4°C short term (1-2 weeks). Upon delivery aliquot. Store at -20°C or -80°C. Avoid freeze / thaw cycle.
Storage buffer	<p>pH: 7.40</p> <p>Preservative: 0.02% Sodium azide</p> <p>Constituent: PBS</p> <p>Batches of this product that have a concentration < 1mg/ml may have BSA added as a stabilising agent. If you would like information about the formulation of a specific lot, please contact our scientific support team who will be happy to help.</p>
Purity	Immunogen affinity purified

Clonality	Polyclonal
Isotype	IgG

Applications

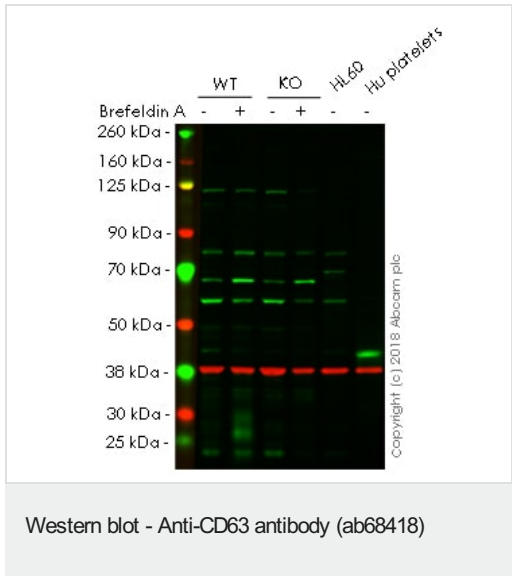
The Abpromise guarantee Our **Abpromise guarantee** covers the use of ab68418 in the following tested applications. The application notes include recommended starting dilutions; optimal dilutions/concentrations should be determined by the end user.

Application	Abreviews	Notes
WB	★★★★★ (1)	Use a concentration of 1 µg/ml. Detects a band of approximately 24,43 kDa (predicted molecular weight: 25 kDa).

Target

Function	This antigen is associated with early stages of melanoma tumor progression. May play a role in growth regulation.
Tissue specificity	Dysplastic nevi, radial growth phase primary melanomas, hematopoietic cells, tissue macrophages.
Sequence similarities	Belongs to the tetraspanin (TM4SF) family.
Cellular localization	Cell membrane. Lysosome membrane. Late endosome membrane. Also found in Weibel-Palade bodies of endothelial cells. Located in platelet dense granules.

Images



- All lanes :** Anti-CD63 antibody (ab68418) at 1 µg/ml
- Lane 1 :** Wild-type HAP1 whole cell lysate
 - Lane 2 :** Wild-type HAP1 Brefeldin A treated whole cell lysate
 - Lane 3 :** CD63 knockout HAP1 whole cell lysate
 - Lane 4 :** CD63 knockout HAP1 Brefeldin A treated whole cell lysate
 - Lane 5 :** HL60 whole cell lysate
 - Lane 6 :** Human platelets whole cell lysate

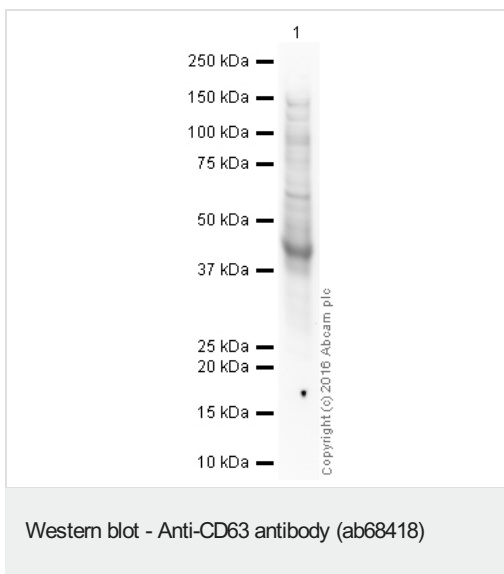
Lysates/proteins at 20 µg per lane.

Predicted band size: 25 kDa

Lanes 1 - 6: Merged signal (red and green). Green - ab68418 observed at 26 kDa. Red - loading control, [ab8245](#), observed at 38

kDa.

ab68418 was shown to recognize CD63 in wild-type HAP1 as signal was lost at the expected MW in CD63 knockout HAP1 cells. Additional cross-reactive bands were observed in the wild-type and knockout cells. Wild-type and CD63 knockout samples were subjected to SDS-PAGE. Ab68418 and **ab8245** (Mouse anti-GAPDH loading control) were incubated overnight at 4°C at 1 µg/ml and 1/20000 dilution respectively. Blots were developed with Goat anti-Rabbit IgG H&L (IRDye® 800CW) preabsorbed **ab216773** and Goat anti-Mouse IgG H&L (IRDye® 680RD) preabsorbed **ab216776** secondary antibodies at 1/20000 dilution for 1 hour at room temperature before imaging.



Anti-CD63 antibody (ab68418) at 1 µg/ml + Platelet (Human) Whole Cell Lysate at 10 µg

Secondary

Goat polyclonal to Rabbit IgG - H&L - Pre-Adsorbed (HRP) at 1/50000 dilution

Developed using the ECL technique.

Performed under reducing conditions.

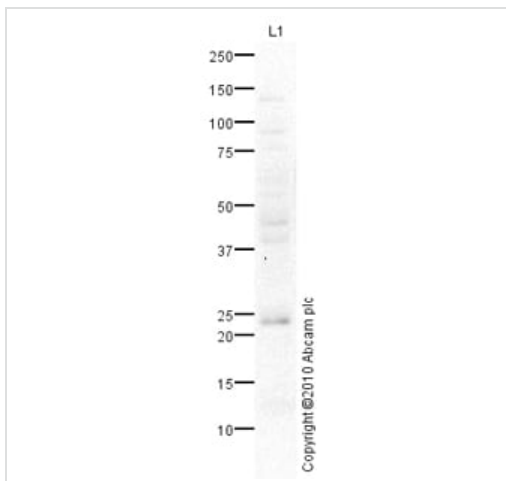
Predicted band size: 25 kDa

Observed band size: 43 kDa

Exposure time: 8 minutes

This blot was produced using a 4-12% Bis-tris gel under the MES buffer system. The gel was run at 200V for 35 minutes before being transferred onto a Nitrocellulose membrane at 30V for 70 minutes. The membrane was then blocked for an hour using 2% Bovine Serum Albumin before being incubated with ab68418 overnight at 4°C. Antibody binding was detected using an anti-rabbit antibody conjugated to HRP, and visualised using ECL development solution **ab133406**.

CD63 has a predicted molecular weight of 25 kDa; however it has a number of potential glycosylation sites which may affect the migration of the protein (SwissProt data). This is consistent with the literature which describes a band between 30-60 kDa in human platelets(PMID:1993697).



Western blot - Anti-CD63 antibody (ab68418)

Anti-CD63 antibody (ab68418) at 1 µg/ml + HepG2 (Human hepatocellular liver carcinoma cell line) Whole Cell Lysate at 10 µg

Secondary

Goat polyclonal to Rabbit IgG - H&L - Pre-Adsorbed (HRP) at 1/3000 dilution

Developed using the ECL technique.

Performed under reducing conditions.

Predicted band size: 25 kDa

Observed band size: 24 kDa

Additional bands at: 145 kDa, 42 kDa (possible glycosylated form). We are unsure as to the identity of these extra bands.

Exposure time: 20 minutes

The 42 kDa band observed is comparable to the molecular weight seen with other commercially available antibodies to human CD63 antigen.

Please note: All products are "FOR RESEARCH USE ONLY. NOT FOR USE IN DIAGNOSTIC PROCEDURES"

Our Abpromise to you: Quality guaranteed and expert technical support

- Replacement or refund for products not performing as stated on the datasheet
- Valid for 12 months from date of delivery
- Response to your inquiry within 24 hours
- We provide support in Chinese, English, French, German, Japanese and Spanish
- Extensive multi-media technical resources to help you
- We investigate all quality concerns to ensure our products perform to the highest standards

If the product does not perform as described on this datasheet, we will offer a refund or replacement. For full details of the Abpromise, please visit <https://www.abcam.com/abpromise> or contact our technical team.

Terms and conditions

- Guarantee only valid for products bought direct from Abcam or one of our authorized distributors