

Product datasheet

Anti-CD72 antibody ab201079

1 Image

Overview

| | |
|----------------------------|---|
| Product name | Anti-CD72 antibody |
| Description | Rabbit polyclonal to CD72 |
| Host species | Rabbit |
| Tested applications | Suitable for: WB |
| Species reactivity | Reacts with: Mouse, Rat, Human |
| Immunogen | Synthetic peptide corresponding to Human CD72 aa 150-250. Database link: P21854 Run BLAST with Run BLAST with |
| Positive control | RAW264.7, H9C2 and HeLa cell lysates. |
| General notes | <p>The Life Science industry has been in the grips of a reproducibility crisis for a number of years. Abcam is leading the way in addressing this with our range of recombinant monoclonal antibodies and knockout edited cell lines for gold-standard validation. Please check that this product meets your needs before purchasing.</p> <p>If you have any questions, special requirements or concerns, please send us an inquiry and/or contact our Support team ahead of purchase. Recommended alternatives for this product can be found below, along with publications, customer reviews and Q&As</p> |

Properties

| | |
|-----------------------------|---|
| Form | Liquid |
| Storage instructions | Shipped at 4°C. Store at +4°C short term (1-2 weeks). Upon delivery aliquot. Store at -20°C long term. Avoid freeze / thaw cycle. |
| Storage buffer | pH: 7.30 Preservative: 0.05% Sodium azide Constituent: 99% PBS |
| Purity | Immunogen affinity purified |
| Purification notes | Purity >95% by SDS-PAGE. |
| Clonality | Polyclonal |
| Isotype | IgG |

Applications

The Abpromise guarantee

Our **Abpromise guarantee** covers the use of ab201079 in the following tested applications.

The application notes include recommended starting dilutions; optimal dilutions/concentrations should be determined by the end user.

| Application | Abreviews | Notes |
|-------------|-----------|---|
| WB | | 1/500 - 1/1000. Predicted molecular weight: 40 kDa. |

Target

Function

Plays a role in B-cell proliferation and differentiation.

Tissue specificity

Pre-B-cells and B-cells but not terminally differentiated plasma cells.

Sequence similarities

Contains 1 C-type lectin domain.

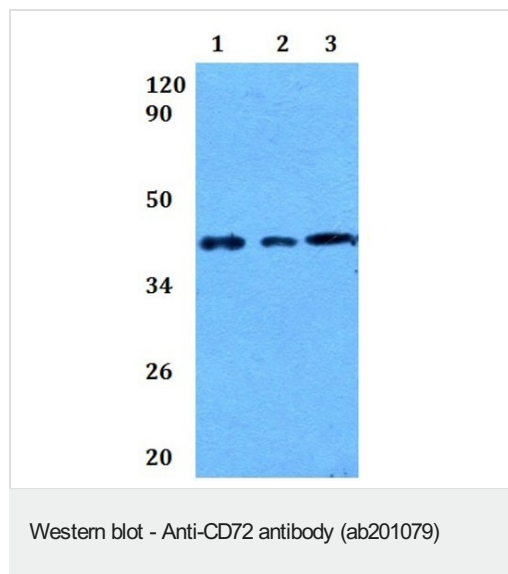
Post-translational modifications

Phosphorylated upon engagement of the B-cell receptor, probably by LYN or SYK.
Phosphorylation at Tyr-7 is important for interaction with PTPN6/SHP-1.

Cellular localization

Membrane.

Images



All lanes : Anti-CD72 antibody (ab201079)

Lane 1 : RAW264.7 whole cell lysate

Lane 2 : H9C2 whole cell lysate

Lane 3 : HeLa whole cell lysate

Predicted band size: 40 kDa

Please note: All products are "FOR RESEARCH USE ONLY. NOT FOR USE IN DIAGNOSTIC PROCEDURES"

Our Abpromise to you: Quality guaranteed and expert technical support

- Replacement or refund for products not performing as stated on the datasheet
- Valid for 12 months from date of delivery
- Response to your inquiry within 24 hours
- We provide support in Chinese, English, French, German, Japanese and Spanish
- Extensive multi-media technical resources to help you

- We investigate all quality concerns to ensure our products perform to the highest standards

If the product does not perform as described on this datasheet, we will offer a refund or replacement. For full details of the Abpromise, please visit <https://www.abcam.com/abpromise> or contact our technical team.

Terms and conditions

- Guarantee only valid for products bought direct from Abcam or one of our authorized distributors