


## Product datasheet

### Anti-Cdc20 antibody ab26483

★★★★★ [1 Abreviews](#) [16 References](#) [2 Images](#)

#### Overview

<b>Product name</b>	Anti-Cdc20 antibody
<b>Description</b>	Rabbit polyclonal to Cdc20
<b>Host species</b>	Rabbit
<b>Tested applications</b>	<b>Suitable for:</b> WB, ICC/IF
<b>Species reactivity</b>	<b>Reacts with:</b> Human <b>Predicted to work with:</b> Mouse, Rat, Chicken, Pig 
<b>Immunogen</b>	Synthetic peptide conjugated to KLH derived from within residues 450 to the C-terminus of Human Cdc20. Read Abcam's proprietary immunogen policy (Peptide available as <a href="#">ab28138</a> .)
<b>Positive control</b>	This antibody gave a positive result in the following whole cell lysates: Raji (Human Burkitt's lymphoma cell line) THP1 (Human acute monocytic leukemia cell line) HEK 293 (Human embryonic kidney cell line) HL60 (Human promyelocytic leukemia cell line)
<b>General notes</b>	<p>The Life Science industry has been in the grips of a reproducibility crisis for a number of years. Abcam is leading the way in addressing this with our range of recombinant monoclonal antibodies and knockout edited cell lines for gold-standard validation. Please check that this product meets your needs before purchasing.</p> <p>If you have any questions, special requirements or concerns, please send us an inquiry and/or contact our Support team ahead of purchase. Recommended alternatives for this product can be found below, along with publications, customer reviews and Q&amp;As</p>

#### Properties

<b>Form</b>	Liquid
<b>Storage instructions</b>	Shipped at 4°C. Store at +4°C short term (1-2 weeks). Upon delivery aliquot. Store at -20°C or -80°C. Avoid freeze / thaw cycle.
<b>Storage buffer</b>	<p>pH: 7.40</p> <p>Preservative: 0.02% Sodium azide</p> <p>Constituent: PBS</p> <p>Batches of this product that have a concentration &lt; 1mg/ml may have BSA added as a stabilising agent. If you would like information about the formulation of a specific lot, please contact our scientific support team who will be happy to help.</p>

<b>Purity</b>	Immunogen affinity purified
<b>Clonality</b>	Polyclonal
<b>Isotype</b>	IgG

## Applications

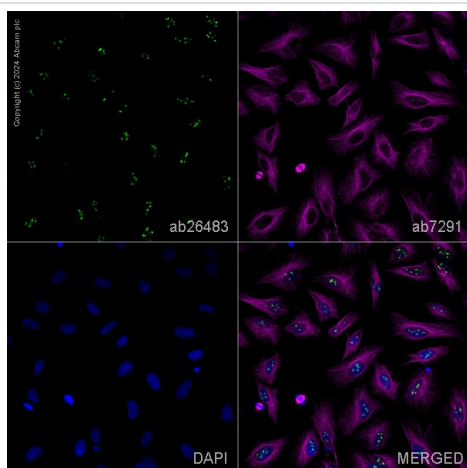
**The Abpromise guarantee** Our **Abpromise guarantee** covers the use of ab26483 in the following tested applications. The application notes include recommended starting dilutions; optimal dilutions/concentrations should be determined by the end user.

Application	Abreviews	Notes
WB	★★★★★ (1)	Use a concentration of 1 µg/ml. Detects a band of approximately 60 kDa (predicted molecular weight: 55 kDa).
ICC/IF		Use a concentration of 1 µg/ml.

## Target

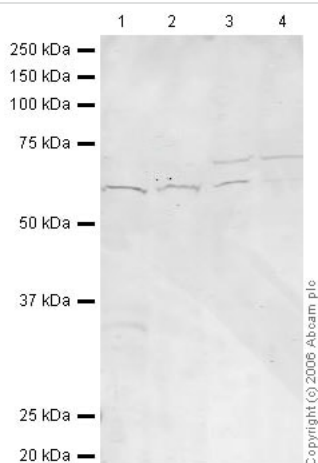
<b>Function</b>	Required for full ubiquitin ligase activity of the anaphase promoting complex/cyclosome (APC/C) and may confer substrate specificity upon the complex. Is regulated by MAD2L1. In metaphase the MAD2L1-CDC20-APC/C ternary complex is inactive and in anaphase the CDC20-APC/C binary complex is active in degrading substrates.
<b>Pathway</b>	Protein modification; protein ubiquitination.
<b>Sequence similarities</b>	Belongs to the WD repeat CDC20/Fizzy family. Contains 7 WD repeats.
<b>Developmental stage</b>	Synthesis is initiated at G1/S, protein level peaks in M phase and protein is abruptly degraded at M/G1 transition.
<b>Post-translational modifications</b>	Phosphorylated during mitosis, probably by maturation promoting factor (MPF). Phosphorylated by BUB1 at Ser-41; Ser-72; Ser-92; Ser-153; Thr-157 and Ser-161. Ubiquitinated and degraded by the proteasome during spindle assembly checkpoint. Deubiquitinated by USP44, leading to stabilize the MAD2L1-CDC20-APC/C ternary complex, thereby preventing premature activation of the APC/C.

## Images



Immunocytochemistry/ Immunofluorescence - Anti-Cdc20 antibody (ab26483)

ab26483 staining Cdc20 in HeLa cells. The cells were fixed with 100% methanol (5 min), permeabilized with 0.1% PBS-Triton X-100 for 5 minutes and then blocked with 1% BSA/10% normal goat serum/0.3M glycine in 0.1% PBS-Tween for 1h. The cells were then incubated overnight at 4°C with ab26483 at 1µg/ml and **ab6046**, Rabbit polyclonal to beta Tubulin - Loading Control. Cells were then incubated with **ab150117**, Goat polyclonal Secondary Antibody to Mouse IgG H&L (Alexa Fluor® 488) preadsorbed at 1/1000 dilution (shown in green) and **ab150080**, Goat polyclonal Secondary Antibody to Rabbit IgG - H&L (Alexa Fluor® 594) at 1/1000 dilution (shown in pseudocolour magenta). Nuclear DNA was labelled with DAPI (shown in blue). Also suitable in cells fixed with 4% paraformaldehyde (10 min). Image was acquired with a high-content analyser (Operetta CLS, Perkin Elmer) and a maximum intensity projection of confocal sections is shown.



Western blot - Anti-Cdc20 antibody (ab26483)

**All lanes** : Anti-Cdc20 antibody (ab26483) at 1 µg/ml

**Lane 1** : Raji (Human Burkitt's lymphoma cell line) Whole Cell Lysate (**ab7908**)

**Lane 2** : THP-1 whole cell lysate (**ab7913**)

**Lane 3** : HEK-293 whole cell lysate (**ab7902**)

**Lane 4** : HL-60 whole cell lysate (**ab7914**)

Lysates/proteins at 20 µg per lane.

### Secondary

**All lanes** : IRDye 680 Conjugated Goat Anti-Rabbit IgG (H+L) at 1/15000 dilution

Performed under reducing conditions.

**Predicted band size:** 55 kDa

ab26483 consistently detects a band at 55-60 kDa but we also see bands of ~35 and 70 kDa that appear with varying intensity in some of our extracts. We cannot find an explanation for this and are unsure of the nature of these crossreacting bands.

**Please note:** All products are "FOR RESEARCH USE ONLY. NOT FOR USE IN DIAGNOSTIC PROCEDURES"

### **Our Abpromise to you: Quality guaranteed and expert technical support**

---

- Replacement or refund for products not performing as stated on the datasheet
- Valid for 12 months from date of delivery
- Response to your inquiry within 24 hours
- We provide support in Chinese, English, French, German, Japanese and Spanish
- Extensive multi-media technical resources to help you
- We investigate all quality concerns to ensure our products perform to the highest standards

If the product does not perform as described on this datasheet, we will offer a refund or replacement. For full details of the Abpromise, please visit <https://www.abcam.com/abpromise> or contact our technical team.

### **Terms and conditions**

---

- Guarantee only valid for products bought direct from Abcam or one of our authorized distributors