

Product datasheet

Anti-CDC25 (phospho S916) antibody ab192816

1 Image

Overview

Product name	Anti-CDC25 (phospho S916) antibody
Description	Rabbit polyclonal to CDC25 (phospho S916)
Host species	Rabbit
Tested applications	Suitable for: IHC-P
Species reactivity	Reacts with: Human
Immunogen	Synthetic peptide corresponding to Human CDC25 (phospho S916) conjugated to keyhole limpet haemocyanin. Peptide sequence around phosphorylation site of Serine 916 (N-E-G(p)-T P). NP_002882.3. Database link: Q13972
Positive control	IHC: Human Kidney cancer tissue
General notes	<p>The Life Science industry has been in the grips of a reproducibility crisis for a number of years. Abcam is leading the way in addressing this with our range of recombinant monoclonal antibodies and knockout edited cell lines for gold-standard validation. Please check that this product meets your needs before purchasing.</p> <p>If you have any questions, special requirements or concerns, please send us an inquiry and/or contact our Support team ahead of purchase. Recommended alternatives for this product can be found below, along with publications, customer reviews and Q&As</p>

Properties

Form	Liquid
Storage instructions	Shipped at 4°C. Store at +4°C short term (1-2 weeks). Upon delivery aliquot. Store at -20°C long term. Avoid freeze / thaw cycle.
Storage buffer	pH: 7.40 Preservative: 0.02% Sodium azide Constituents: 50% Glycerol (glycerin, glycerine), 49% PBS, 0.87% Sodium chloride PBS without Mg ²⁺ and Ca ²⁺
Purity	Immunogen affinity purified
Purification notes	ab192816 is purified by affinity-chromatography using epitope-specific phosphopeptide. Non-phospho specific antibodies were removed by chromatography using non-phosphopeptide.

Clonality	Polyclonal
Isotype	IgG

Applications

The Abpromise guarantee Our **Abpromise guarantee** covers the use of ab192816 in the following tested applications. The application notes include recommended starting dilutions; optimal dilutions/concentrations should be determined by the end user.

Application	Abreviews	Notes
IHC-P		1/50 - 1/100.

Target

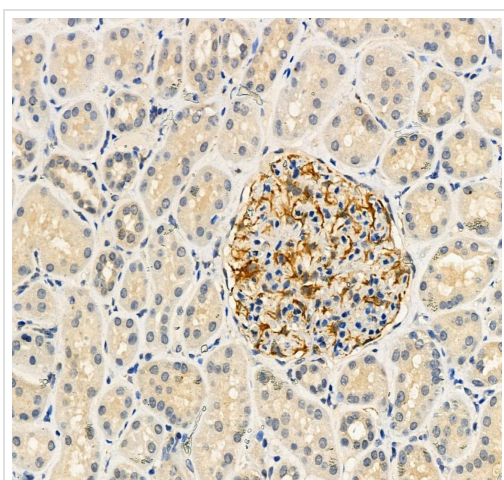
Function Promotes the exchange of Ras-bound GDP by GTP.

Sequence similarities Contains 1 DH (DBL-homology) domain.
Contains 1 IQ domain.
Contains 1 N-terminal Ras-GEF domain.
Contains 2 PH domains.
Contains 1 Ras-GEF domain.

Domain The DH (DBL-homology) domain mediates interaction with RASGRF2.

Post-translational modifications Ubiquitinated.

Images



Immunohistochemical analysis of paraffin-embedded Human Kidney cancer tissue labeling CDC25 with ab192816 at a 1/50 dilution.

Immunohistochemistry (Formalin/PFA-fixed paraffin-embedded sections) - Anti-CDC25 (phospho S916) antibody (ab192816)

Please note: All products are "FOR RESEARCH USE ONLY. NOT FOR USE IN DIAGNOSTIC PROCEDURES"

Our Abpromise to you: Quality guaranteed and expert technical support

- Replacement or refund for products not performing as stated on the datasheet
- Valid for 12 months from date of delivery
- Response to your inquiry within 24 hours

- We provide support in Chinese, English, French, German, Japanese and Spanish
- Extensive multi-media technical resources to help you
- We investigate all quality concerns to ensure our products perform to the highest standards

If the product does not perform as described on this datasheet, we will offer a refund or replacement. For full details of the Abpromise, please visit <https://www.abcam.com/abpromise> or contact our technical team.

Terms and conditions

- Guarantee only valid for products bought direct from Abcam or one of our authorized distributors