

Product datasheet

Anti-Cdc25C (phospho S216) antibody ab47322

★★★★★ [2 Abreviews](#) [6 References](#) [1 Image](#)

Overview

Product name	Anti-Cdc25C (phospho S216) antibody
Description	Rabbit polyclonal to Cdc25C (phospho S216)
Host species	Rabbit
Tested applications	Suitable for: IHC-P
Species reactivity	Reacts with: Human
Immunogen	Synthetic peptide corresponding to Human Cdc25C aa 150-250 (phospho S216). Database link: P30307
Positive control	human breast carcinoma
General notes	<p>The Life Science industry has been in the grips of a reproducibility crisis for a number of years. Abcam is leading the way in addressing this with our range of recombinant monoclonal antibodies and knockout edited cell lines for gold-standard validation. Please check that this product meets your needs before purchasing.</p> <p>If you have any questions, special requirements or concerns, please send us an inquiry and/or contact our Support team ahead of purchase. Recommended alternatives for this product can be found below, along with publications, customer reviews and Q&As</p>

Properties

Form	Liquid
Storage instructions	Shipped at 4°C. Store at -20°C. Stable for 12 months at -20°C.
Storage buffer	pH: 7.40 Preservative: 0.02% Sodium azide Constituents: PBS, 50% Glycerol (glycerin, glycerine), 0.87% Sodium chloride
Purity	Immunogen affinity purified
Purification notes	The antibody against non-phosphopeptide was removed by chromatography using non-phosphopeptide corresponding to the phosphorylation site.
Clonality	Polyclonal
Isotype	IgG

Applications

The Abpromise guarantee

Our **Abpromise guarantee** covers the use of ab47322 in the following tested applications.

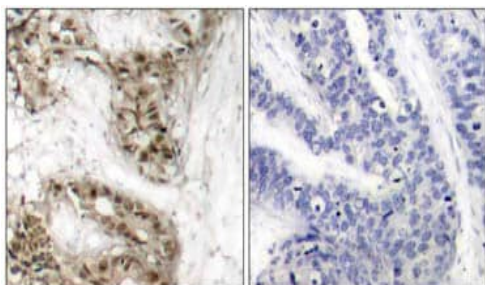
The application notes include recommended starting dilutions; optimal dilutions/concentrations should be determined by the end user.

Application	Abreviews	Notes
IHC-P	★★★★★ (1)	1/50 - 1/100.

Target

Function	Functions as a dosage-dependent inducer in mitotic control. It is a tyrosine protein phosphatase required for progression of the cell cycle. It directly dephosphorylates CDK1 and activate its kinase activity.
Sequence similarities	Belongs to the MPI phosphatase family. Contains 1 rhodanese domain.
Developmental stage	Expressed predominantly in G2 phase.
Post-translational modifications	Phosphorylated by CHK1 on Ser-216. This phosphorylation creates a binding site for 14-3-3 protein and inhibits the phosphatase. Phosphorylated by PLK4.
Cellular localization	Nucleus.

Images



ab47322 staining human breast carcinoma tissue by IHC-P (left hand panel). The right hand panel shows staining in the presence of phospho-peptide.

Immunohistochemistry (Formalin/PFA-fixed paraffin-embedded sections) - Anti-Cdc25C (phospho S216) antibody (ab47322)

Please note: All products are "FOR RESEARCH USE ONLY. NOT FOR USE IN DIAGNOSTIC PROCEDURES"

Our Abpromise to you: Quality guaranteed and expert technical support

- Replacement or refund for products not performing as stated on the datasheet
- Valid for 12 months from date of delivery
- Response to your inquiry within 24 hours
- We provide support in Chinese, English, French, German, Japanese and Spanish

- Extensive multi-media technical resources to help you
- We investigate all quality concerns to ensure our products perform to the highest standards

If the product does not perform as described on this datasheet, we will offer a refund or replacement. For full details of the Abpromise, please visit <https://www.abcam.com/abpromise> or contact our technical team.

Terms and conditions

- Guarantee only valid for products bought direct from Abcam or one of our authorized distributors