

Product datasheet

Anti-Cdc37 antibody ab223361

3 Images

Overview

Product name	Anti-Cdc37 antibody
Description	Rabbit polyclonal to Cdc37
Host species	Rabbit
Tested applications	Suitable for: ICC/IF, WB
Species reactivity	Reacts with: Human
Immunogen	Full length native protein (purified) corresponding to Human Cdc37. Database link: Q16543
Positive control	WB: HeLa cell lysate. ICC/IF: Heat shocked HeLa cells.
General notes	<p>The Life Science industry has been in the grips of a reproducibility crisis for a number of years. Abcam is leading the way in addressing this with our range of recombinant monoclonal antibodies and knockout edited cell lines for gold-standard validation. Please check that this product meets your needs before purchasing.</p> <p>If you have any questions, special requirements or concerns, please send us an inquiry and/or contact our Support team ahead of purchase. Recommended alternatives for this product can be found below, along with publications, customer reviews and Q&As</p>

Properties

Form	Liquid
Storage instructions	Shipped at 4°C. Store at +4°C short term (1-2 weeks). Upon delivery aliquot. Store at -20°C long term. Avoid freeze / thaw cycle.
Storage buffer	Preservative: 0.09% Sodium azide Constituents: 50% Glycerol (glycerin, glycerine), PBS
Purity	Protein A purified
Clonality	Polyclonal
Isotype	IgG

Applications

The Abpromise guarantee Our **Abpromise guarantee** covers the use of ab223361 in the following tested applications.

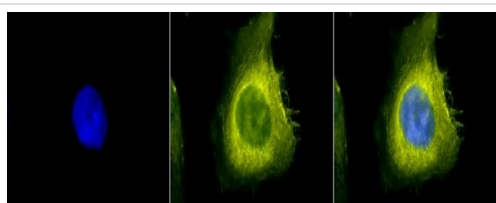
The application notes include recommended starting dilutions; optimal dilutions/concentrations should be determined by the end user.

Application	Abreviews	Notes
ICC/IF		1/200.
WB		1/2000. Predicted molecular weight: 44.5 kDa.

Target

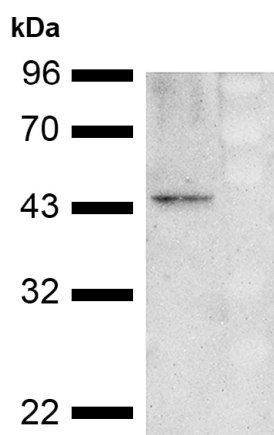
Function	Co-chaperone that binds to numerous kinases and promotes their interaction with the Hsp90 complex, resulting in stabilization and promotion of their activity.
Sequence similarities	Belongs to the CDC37 family.
Post-translational modifications	Constitutively sumoylated by UBE2I.
Cellular localization	Cytoplasm.

Images



Immunocytochemistry/ Immunofluorescence - Anti-Cdc37 antibody (ab223361)

Formaldehyde-fixed heat shocked HeLa (human epithelial cell line from cervix adenocarcinoma) cells stained for Cdc37 (yellow) using ab223361 at 1/200 dilution in ICC/IF. Secondary antibody: R-PE Goat Anti-Rabbit (yellow) at 1/200. The nuclear counter stain is DAPI (blue). The right-hand panel shows the merged images.

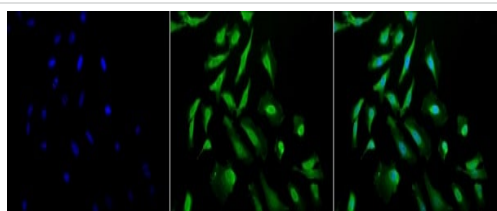


Western blot - Anti-Cdc37 antibody (ab223361)

Anti-Cdc37 antibody (ab223361) at 1/2000 dilution + HeLa (human epithelial cell line from cervix adenocarcinoma) cell lysate

Developed using the ECL technique.

Predicted band size: 44.5 kDa



Immunocytochemistry/ Immunofluorescence - Anti-Cdc37 antibody (ab223361)

2% Formaldehyde-fixed heat shocked HeLa (human epithelial cell line from cervix adenocarcinoma) cells stained for Cdc37 (green) using ab223361 at 1/200 dilution in ICC/IF. Secondary antibody: FITC Goat Anti-Rabbit at 1/200. The nuclear counter stain is DAPI (blue). The right-hand panel shows the merged images.

Please note: All products are "FOR RESEARCH USE ONLY. NOT FOR USE IN DIAGNOSTIC PROCEDURES"

Our Abpromise to you: Quality guaranteed and expert technical support

- Replacement or refund for products not performing as stated on the datasheet
- Valid for 12 months from date of delivery
- Response to your inquiry within 24 hours
- We provide support in Chinese, English, French, German, Japanese and Spanish
- Extensive multi-media technical resources to help you
- We investigate all quality concerns to ensure our products perform to the highest standards

If the product does not perform as described on this datasheet, we will offer a refund or replacement. For full details of the Abpromise, please visit <https://www.abcam.com/abpromise> or contact our technical team.

Terms and conditions

- Guarantee only valid for products bought direct from Abcam or one of our authorized distributors