

## Product datasheet

# Anti-CDC42EP1 antibody [EPR10129(B)] ab151747

Recombinant RabMAb

2 Images

### Overview

<b>Product name</b>	Anti-CDC42EP1 antibody [EPR10129(B)]
<b>Description</b>	Rabbit monoclonal [EPR10129(B)] to CDC42EP1
<b>Host species</b>	Rabbit
<b>Tested applications</b>	<b>Suitable for:</b> WB <b>Unsuitable for:</b> Flow Cyt, ICC/IF, IHC-P or IP
<b>Species reactivity</b>	<b>Reacts with:</b> Human
<b>Immunogen</b>	Synthetic peptide within Human CDC42EP1 aa 300-400. The exact sequence is proprietary.
<b>Positive control</b>	ECV304 and HUVEC cell lysates.
<b>General notes</b>	<p>This product is a recombinant monoclonal antibody, which offers several advantages including:</p> <ul style="list-style-type: none"><li>- High batch-to-batch consistency and reproducibility</li><li>- Improved sensitivity and specificity</li><li>- Long-term security of supply</li><li>- Animal-free production</li></ul> <p>For more information <a href="#">see here</a>.</p> <p>Our RabMAb<sup>®</sup> technology is a patented hybridoma-based technology for making rabbit monoclonal antibodies. For details on our patents, please refer to <a href="#">RabMAb<sup>®</sup> patents</a>.</p> <p>Mouse, Rat: We have preliminary internal testing data to indicate this antibody may not react with these species. Please contact us for more information.</p>

### Properties

<b>Form</b>	Liquid
<b>Storage instructions</b>	Shipped at 4°C. Upon delivery aliquot and store at -20°C. Avoid repeated freeze / thaw cycles.
<b>Storage buffer</b>	pH: 7.2 Preservative: 0.01% Sodium azide Constituents: 9% PBS, 40% Glycerol (glycerin, glycerine), 0.05% BSA, 50% Tissue culture supernatant
<b>Purity</b>	Tissue culture supernatant
<b>Clonality</b>	Monoclonal

Clone number EPR10129(B)

Isotype IgG

## Applications

**The Abpromise guarantee** Our **Abpromise guarantee** covers the use of ab151747 in the following tested applications.

The application notes include recommended starting dilutions; optimal dilutions/concentrations should be determined by the end user.

Application	Abreviews	Notes
WB		1/1000 - 1/10000. Predicted molecular weight: 40 kDa.

**Application notes** Is unsuitable for Flow Cyt, ICC/IF, IHC-P or IP.

## Target

**Function** Probably involved in the organization of the actin cytoskeleton. Induced membrane extensions in fibroblasts.

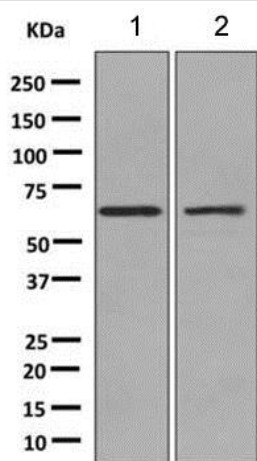
**Tissue specificity** Endothelial and bone marrow stromal cells.

**Sequence similarities** Belongs to the BORG/CEP family.  
Contains 1 CRIB domain.

**Domain** The CRIB domain mediates interaction with CDC42.

**Cellular localization** Endomembrane system. Cytoplasm > cytoskeleton.

## Images



**All lanes** : Anti-CDC42EP1 antibody [EPR10129(B)] (ab151747)  
at 1/1000 dilution

**Lane 1** : ECV304 cell lysate

**Lane 2** : HUVEC cell lysate

Lysates/proteins at 10 µg per lane.

**Predicted band size:** 40 kDa

Western blot - Anti-CDC42EP1 antibody  
[EPR10129(B)] (ab151747)

### Why choose a recombinant antibody?



**Research with confidence**  
Consistent and reproducible results



**Long-term and scalable supply**  
Recombinant technology



**Success from the first experiment**  
Confirmed specificity



**Ethical standards compliant**  
Animal-free production

Anti-CDC42EP1 antibody [EPR10129(B)]  
(ab151747)

**Please note:** All products are "FOR RESEARCH USE ONLY. NOT FOR USE IN DIAGNOSTIC PROCEDURES"

### Our Abpromise to you: Quality guaranteed and expert technical support

---

- Replacement or refund for products not performing as stated on the datasheet
- Valid for 12 months from date of delivery
- Response to your inquiry within 24 hours
- We provide support in Chinese, English, French, German, Japanese and Spanish
- Extensive multi-media technical resources to help you
- We investigate all quality concerns to ensure our products perform to the highest standards

If the product does not perform as described on this datasheet, we will offer a refund or replacement. For full details of the Abpromise, please visit <https://www.abcam.com/abpromise> or contact our technical team.

### Terms and conditions

---

- Guarantee only valid for products bought direct from Abcam or one of our authorized distributors