

## Product datasheet

### Anti-CDC45L antibody ab230178

4 Images

#### Overview

---

<b>Product name</b>	Anti-CDC45L antibody
<b>Description</b>	Rabbit polyclonal to CDC45L
<b>Host species</b>	Rabbit
<b>Tested applications</b>	<b>Suitable for:</b> WB, ICC/IF, IP, IHC-P
<b>Species reactivity</b>	<b>Reacts with:</b> Human
<b>Immunogen</b>	Recombinant fragment corresponding to Human CDC45L aa 1-270. Database link: <a href="#">O75419</a>
<b>Positive control</b>	WB: K562, HEK-293T, HeLa and HepG2 whole cell lysate. IHC-P: Human kidney tissue. IP: K562 whole cell lysate. ICC/IF: HeLa cells.
<b>General notes</b>	<p>The Life Science industry has been in the grips of a reproducibility crisis for a number of years. Abcam is leading the way in addressing this with our range of recombinant monoclonal antibodies and knockout edited cell lines for gold-standard validation. Please check that this product meets your needs before purchasing.</p> <p>If you have any questions, special requirements or concerns, please send us an inquiry and/or contact our Support team ahead of purchase. Recommended alternatives for this product can be found below, along with publications, customer reviews and Q&amp;As</p>

#### Properties

---

<b>Form</b>	Liquid
<b>Storage instructions</b>	Shipped at 4°C. Store at +4°C short term (1-2 weeks). Upon delivery aliquot. Store at -20°C long term. Avoid freeze / thaw cycle.
<b>Storage buffer</b>	pH: 7.30 Preservative: 0.02% Sodium azide Constituents: PBS, 50% Glycerol (glycerin, glycerine)
<b>Purity</b>	Immunogen affinity purified
<b>Clonality</b>	Polyclonal
<b>Isotype</b>	IgG

#### Applications

---

## The Abpromise guarantee

Our **Abpromise guarantee** covers the use of ab230178 in the following tested applications.

The application notes include recommended starting dilutions; optimal dilutions/concentrations should be determined by the end user.

Application	Abreviews	Notes
WB		1/1000 - 1/5000. Detects a band of approximately 66, 58 kDa (predicted molecular weight: 66, 60, 69 kDa).
ICC/IF		1/50 - 1/200.
IP		1/20 - 1/2000.
IHC-P		1/20 - 1/200.

## Target

### Function

Required for initiation of chromosomal DNA replication.

### Tissue specificity

Widely expressed, highest levels are found in adult testis and thymus and in fetal liver.

### Sequence similarities

Belongs to the CDC45 family.

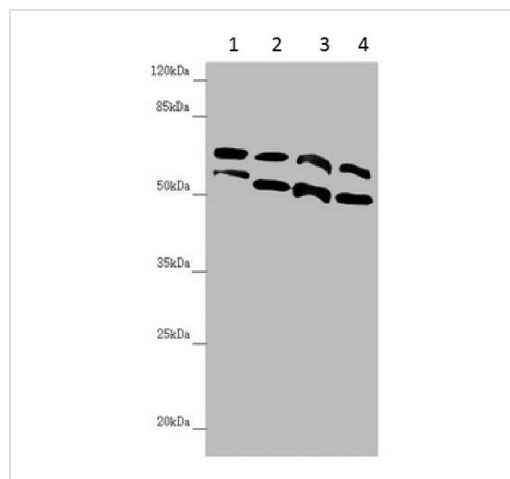
### Developmental stage

Transcript peaks at G1-S transition, but total protein remains constant throughout the cell cycle. Expressed in multiple tissues during embryogenesis, including neural crest-derived structures.

### Cellular localization

Cytoplasm. Nucleus.

## Images



Western blot - Anti-CDC45L antibody (ab230178)

**All lanes** : Anti-CDC45L antibody (ab230178) at 1/1000 dilution

**Lane 1** : K562 (Human chronic myelogenous leukemia cell line from bone marrow) whole cell lysate

**Lane 2** : HEK-293T (Human epithelial cell line from embryonic kidney transformed with large T antigen) whole cell lysate

**Lane 3** : HeLa (Human epithelial cell line from cervix adenocarcinoma) whole cell lysate

**Lane 4** : HepG2 (Human liver hepatocellular carcinoma cell line) whole cell lysate

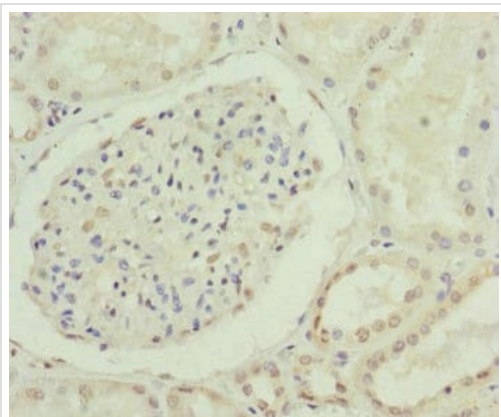
### Secondary

**All lanes** : Goat polyclonal to rabbit IgG at 1/10000 dilution

Developed using the ECL technique.

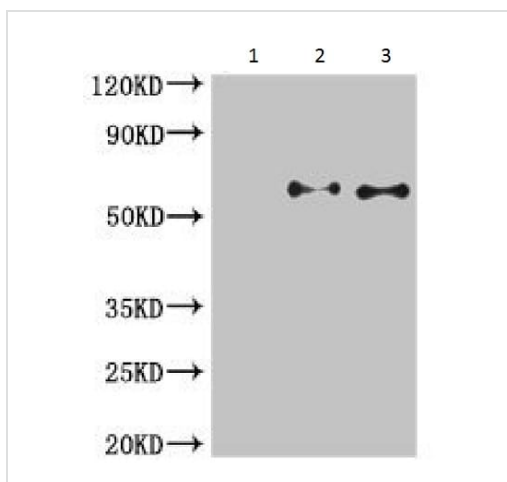
**Predicted band size:** 66, 60, 69 kDa

**Observed band size:** 58,66 kDa



Immunohistochemistry (Formalin/PFA-fixed paraffin-embedded sections) - Anti-CDC45L antibody (ab230178)

Paraffin-embedded human kidney tissue stained for CDC45L with ab230178 at 1/100 dilution in immunohistochemical analysis.



Immunoprecipitation - Anti-CDC45L antibody (ab230178)

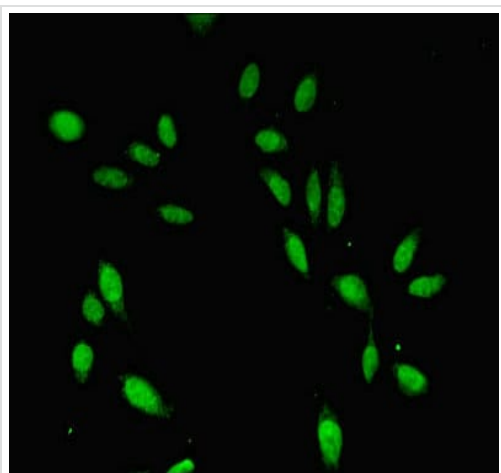
CDC45L was immunoprecipitated from K562 (Human chronic myelogenous leukemia cell line from bone marrow ) whole cell lysate using ab230178.

**Lane 1:** Control IgG IP in K562 whole cell lysate.

**Lane 2:** ab230178 in K562 whole cell lysate.

**Lane 3:** CDC45L in K562 whole cell lysate (Input).

For western blotting, an HRP-conjugated light chain specific antibody was used as the secondary antibody (1/50,000).



Immunocytochemistry/ Immunofluorescence - Anti-CDC45L antibody (ab230178)

HeLa (human epithelial cell line from cervix adenocarcinoma) cells stained for CDC45L using ab230178 at a dilution of 1/100 in ICC/IF.

Secondary is an Alexa Fluor<sup>®</sup>488-conjugated Goat Anti-Rabbit IgG (H+L).

**Please note:** All products are "FOR RESEARCH USE ONLY. NOT FOR USE IN DIAGNOSTIC PROCEDURES"

### **Our Abpromise to you: Quality guaranteed and expert technical support**

---

- Replacement or refund for products not performing as stated on the datasheet
- Valid for 12 months from date of delivery
- Response to your inquiry within 24 hours
  
- We provide support in Chinese, English, French, German, Japanese and Spanish
- Extensive multi-media technical resources to help you
- We investigate all quality concerns to ensure our products perform to the highest standards

If the product does not perform as described on this datasheet, we will offer a refund or replacement. For full details of the Abpromise, please visit <https://www.abcam.com/abpromise> or contact our technical team.

### **Terms and conditions**

---

- Guarantee only valid for products bought direct from Abcam or one of our authorized distributors