


Product datasheet

Anti-CDC7 antibody [EPR4730] ab108332

Recombinant RabMAb

[1 Abreviews](#) [3 References](#) [3 Images](#)

Overview

Product name	Anti-CDC7 antibody [EPR4730]
Description	Rabbit monoclonal [EPR4730] to CDC7
Host species	Rabbit
Tested applications	Suitable for: Flow Cyt (Intra), WB Unsuitable for: ICC/IF, IHC-P or IP
Species reactivity	Reacts with: Human Predicted to work with: Mouse, Rat 
Immunogen	Synthetic peptide. This information is proprietary to Abcam and/or its suppliers.
Positive control	Jurkat, HeLa, and PC3 cell lysates; Jurkat cells.
General notes	<p>This product is a recombinant monoclonal antibody, which offers several advantages including:</p> <ul style="list-style-type: none"> - High batch-to-batch consistency and reproducibility - Improved sensitivity and specificity - Long-term security of supply - Animal-free production <p>For more information see here.</p> <p>Our RabMAb[®] technology is a patented hybridoma-based technology for making rabbit monoclonal antibodies. For details on our patents, please refer to RabMAb[®] patents.</p>

Properties

Form	Liquid
Storage instructions	Shipped at 4°C. Store at -20°C. Stable for 12 months at -20°C.
Storage buffer	pH: 7.20 Preservative: 0.05% Sodium azide Constituents: 0.1% BSA, 40% Glycerol (glycerin, glycerine), 9.85% Tris glycine, 50% Tissue culture supernatant
Purity	Tissue culture supernatant
Clonality	Monoclonal
Clone number	EPR4730

Isotype

IgG

Applications

The Abpromise guarantee

Our **Abpromise guarantee** covers the use of ab108332 in the following tested applications.

The application notes include recommended starting dilutions; optimal dilutions/concentrations should be determined by the end user.

Application	Abreviews	Notes
Flow Cyt (Intra)		1/100 - 1/500. ab172730 - Rabbit monoclonal IgG, is suitable for use as an isotype control with this antibody.
WB		1/1000 - 1/10000. Detects a band of approximately 64 kDa (predicted molecular weight: 64 kDa).

Application notes

Is unsuitable for ICC/IF, IHC-P or IP.

Target

Function

Seems to phosphorylate critical substrates that regulate the G1/S phase transition and/or DNA replication. Can phosphorylates MCM2 and MCM3.

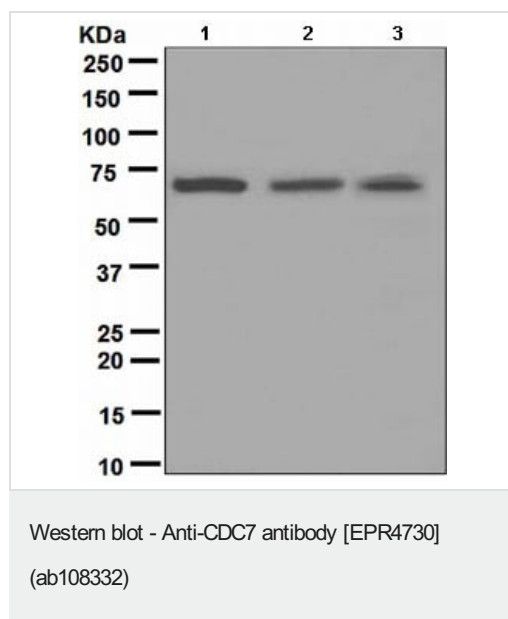
Sequence similarities

Belongs to the protein kinase superfamily. Ser/Thr protein kinase family. CDC7 subfamily. Contains 1 protein kinase domain.

Cellular localization

Nucleus.

Images



All lanes : Anti-CDC7 antibody [EPR4730] (ab108332) at 1/1000 dilution

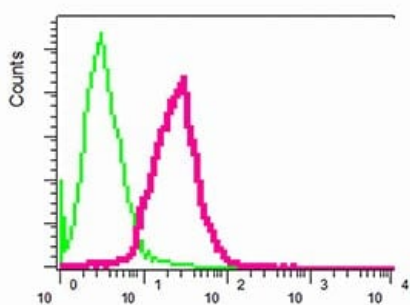
Lane 1 : Jurkat cell lysate

Lane 2 : HeLa cell lysate

Lane 3 : PC3 cell lysate

Lysates/proteins at 10 µg per lane.

Predicted band size: 64 kDa



Flow Cytometry (Intracellular) - Anti-CDC7 antibody
[EPR4730] (ab108332)

ab108332, at 1/100 dilution, staining CDC7 in permeabilized Jurkat cells by intracellular flow cytometry (red). Rabbit IgG (green).

Why choose a recombinant antibody?



Research with confidence
Consistent and reproducible results



Long-term and scalable supply
Recombinant technology



Success from the first experiment
Confirmed specificity



Ethical standards compliant
Animal-free production

Anti-CDC7 antibody [EPR4730] (ab108332)

Please note: All products are "FOR RESEARCH USE ONLY. NOT FOR USE IN DIAGNOSTIC PROCEDURES"

Our Abpromise to you: Quality guaranteed and expert technical support

- Replacement or refund for products not performing as stated on the datasheet
- Valid for 12 months from date of delivery
- Response to your inquiry within 24 hours
- We provide support in Chinese, English, French, German, Japanese and Spanish
- Extensive multi-media technical resources to help you
- We investigate all quality concerns to ensure our products perform to the highest standards

If the product does not perform as described on this datasheet, we will offer a refund or replacement. For full details of the Abpromise, please visit <https://www.abcam.com/abpromise> or contact our technical team.

Terms and conditions

- Guarantee only valid for products bought direct from Abcam or one of our authorized distributors