

## Product datasheet

# Anti-Cdk6 (phospho Y13) antibody ab194871

[2 References](#) [3 Images](#)

### Overview

<b>Product name</b>	Anti-Cdk6 (phospho Y13) antibody
<b>Description</b>	Rabbit polyclonal to Cdk6 (phospho Y13)
<b>Host species</b>	Rabbit
<b>Tested applications</b>	<b>Suitable for:</b> IHC-P, WB, ICC/IF
<b>Species reactivity</b>	<b>Reacts with:</b> Human
<b>Immunogen</b>	Synthetic peptide within Human Cdk6 (phospho Y13). The exact sequence is proprietary. Database link: <a href="#">Q00534</a>
<b>Positive control</b>	293 cell lysate; Human breast carcinoma tissue and HeLa cells
<b>General notes</b>	<p>The Life Science industry has been in the grips of a reproducibility crisis for a number of years. Abcam is leading the way in addressing this with our range of recombinant monoclonal antibodies and knockout edited cell lines for gold-standard validation. Please check that this product meets your needs before purchasing.</p> <p>If you have any questions, special requirements or concerns, please send us an inquiry and/or contact our Support team ahead of purchase. Recommended alternatives for this product can be found below, along with publications, customer reviews and Q&amp;As</p>

### Properties

<b>Form</b>	Liquid
<b>Storage instructions</b>	Shipped at 4°C. Store at +4°C short term (1-2 weeks). Upon delivery aliquot. Store at -20°C long term. Avoid freeze / thaw cycle.
<b>Storage buffer</b>	pH: 7.30 Preservative: 0.02% Sodium azide Constituents: 49% PBS, 50% Glycerol
<b>Purity</b>	Immunogen affinity purified
<b>Clonality</b>	Polyclonal
<b>Isotype</b>	IgG

### Applications

## The Abpromise guarantee

Our **Abpromise guarantee** covers the use of ab194871 in the following tested applications.

The application notes include recommended starting dilutions; optimal dilutions/concentrations should be determined by the end user.

Application	Abreviews	Notes
IHC-P		1/50 - 1/100.
WB		1/500 - 1/2000. Predicted molecular weight: 37 kDa.
ICC/IF		1/100 - 1/200.

## Target

### Function

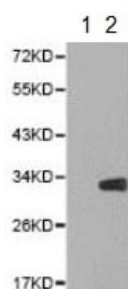
Probably involved in the control of the cell cycle. Interacts with D-type G1 cyclins.

### Sequence similarities

Belongs to the protein kinase superfamily. CMGC Ser/Thr protein kinase family. CDC2/CDKX subfamily.

Contains 1 protein kinase domain.

## Images



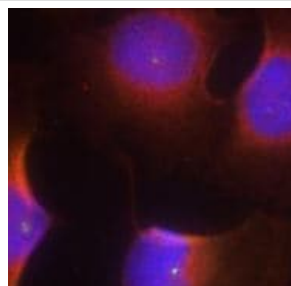
Western blot - Anti-Cdk6 (phospho Y13) antibody (ab194871)

**All lanes :** Anti-Cdk6 (phospho Y13) antibody (ab194871) at 1/500 dilution

**Lane 1 :** Untreated 293 cell lysate

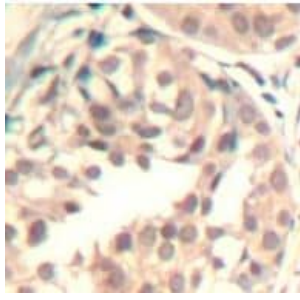
**Lane 2 :** 293 cell lysate treated with HU

**Predicted band size:** 37 kDa



Immunocytochemistry/ Immunofluorescence - Anti-Cdk6 (phospho Y13) antibody (ab194871)

Immunofluorescent staining of methanol-fixed HeLa cells labeling Cdk6 (phospho Y13) using ab194871 at 1/100 dilution.



Immunohistochemical staining of Human breast carcinoma tissue labeling Cdk6 (phospho Y13) using ab194871 at 1/50 dilution.

Immunohistochemistry (Formalin/PFA-fixed paraffin-embedded sections) - Anti-Cdk6 (phospho Y13) antibody (ab194871)

**Please note:** All products are "FOR RESEARCH USE ONLY. NOT FOR USE IN DIAGNOSTIC PROCEDURES"

#### Our Abpromise to you: Quality guaranteed and expert technical support

---

- Replacement or refund for products not performing as stated on the datasheet
- Valid for 12 months from date of delivery
- Response to your inquiry within 24 hours
- We provide support in Chinese, English, French, German, Japanese and Spanish
- Extensive multi-media technical resources to help you
- We investigate all quality concerns to ensure our products perform to the highest standards

If the product does not perform as described on this datasheet, we will offer a refund or replacement. For full details of the Abpromise, please visit <https://www.abcam.com/abpromise> or contact our technical team.

#### Terms and conditions

---

- Guarantee only valid for products bought direct from Abcam or one of our authorized distributors