

Product datasheet

Anti-CDKN2A/p14ARF antibody ab227808

[5 Images](#)

Overview

Product name	Anti-CDKN2A/p14ARF antibody
Description	Rabbit polyclonal to CDKN2A/p14ARF
Host species	Rabbit
Tested applications	Suitable for: WB, IP, ICC/IF
Species reactivity	Reacts with: Human
Immunogen	Synthetic peptide within Human CDKN2A/p14ARF (internal sequence). The exact sequence is proprietary. (Carrier-protein conjugated). Database link: Q8N726
Positive control	WB: HeLa cell extract. ICC/IF: HeLa cells. IP: HeLa whole cell extract.
General notes	<p>The Life Science industry has been in the grips of a reproducibility crisis for a number of years. Abcam is leading the way in addressing this with our range of recombinant monoclonal antibodies and knockout edited cell lines for gold-standard validation. Please check that this product meets your needs before purchasing.</p> <p>If you have any questions, special requirements or concerns, please send us an inquiry and/or contact our Support team ahead of purchase. Recommended alternatives for this product can be found below, along with publications, customer reviews and Q&As</p>

Properties

Form	Liquid
Storage instructions	Shipped at 4°C. Store at +4°C short term (1-2 weeks). Upon delivery aliquot. Store at -20°C long term. Avoid freeze / thaw cycle.
Storage buffer	pH: 7.00 Preservative: 0.025% Proclin 300 Constituents: 79% PBS, 20% Glycerol (glycerin, glycerine)
Purity	Immunogen affinity purified
Clonality	Polyclonal
Isotype	IgG

Applications

The Abpromise guarantee

Our **Abpromise guarantee** covers the use of ab227808 in the following tested applications.

The application notes include recommended starting dilutions; optimal dilutions/concentrations should be determined by the end user.

Application	Abreviews	Notes
WB		1/500 - 1/3000. Predicted molecular weight: 14 kDa.
IP		1/100 - 1/500.
ICC/IF		1/100 - 1/1000.

Target

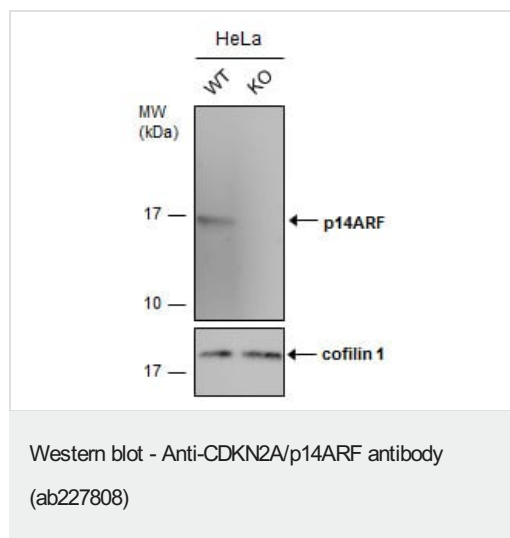
Relevance

The gene for CDKN2A generates several transcripts/proteins which differ from each other in their first exons. Three of these transcripts are generated by alternative splicing (isoform 1 a.k.a p16INK4A, isoform 2 and isoform 3 a.k.a p12), two of which are known to function as inhibitors of CDK4 kinase. One other transcript that is generated from this gene contains an alternate reading frame (ARF), with the first exon located 20kb upstream of the remainder of the gene (isoform 4 a.k.a. p14ARF, p19ARF, ARF). In spite of the structural and some functional differences, all the proteins encoded by the CDKN2A gene are involved in cell cycle G1 control.

Cellular localization

Cytoplasmic and Nuclear

Images



All lanes : Anti-CDKN2A/p14ARF antibody (ab227808) at 1/500 dilution

Lane 1 : WT HeLa cell extract

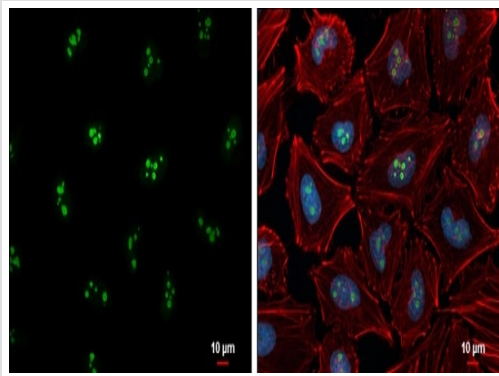
Lane 2 : CDKN2A/p14ARF Knockout HeLa cell extracts

Lysates/proteins at 30 µg per lane.

Secondary

All lanes : HRP-conjugated anti-rabbit IgG

Predicted band size: 14 kDa

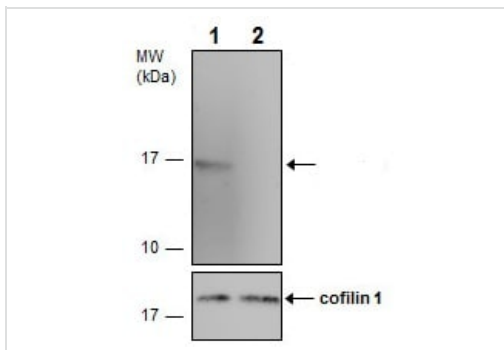


Immunocytochemistry/ Immunofluorescence - Anti-CDKN2A/p14ARF antibody (ab227808)

4% paraformaldehyde-fixed HeLa (human epithelial cell line from cervix adenocarcinoma) cells stained for CDKN2A/p14ARF (green) using ab227808 at 1/500 dilution in ICC/IF.

Red: Phalloidin, a cytoskeleton marker, at 1/200 dilution.

Blue: Hoechst 33342 staining.



Western blot - Anti-CDKN2A/p14ARF antibody (ab227808)

All lanes : Anti-CDKN2A/p14ARF antibody (ab227808) at 1/500 dilution

Lane 1 : Wild-type HeLa (human epithelial cell line from cervix adenocarcinoma) cell extract

Lane 2 : CDKN2A/p14ARF knockout HeLa (human epithelial cell line from cervix adenocarcinoma) cell extract

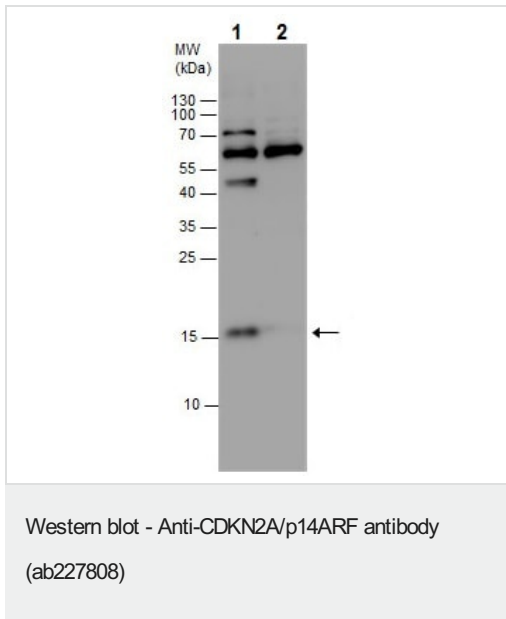
Lysates/proteins at 30 μg per lane.

Secondary

All lanes : HRP-conjugated anti-rabbit IgG

Predicted band size: 14 kDa

15% SDS-PAGE gel.



All lanes : Anti-CDKN2A/p14ARF antibody (ab227808) at 1/1000 dilution

Lane 1 : HeLa (human epithelial cell line from cervix adenocarcinoma) whole cell extract

Lane 2 : HepG2 (human liver hepatocellular carcinoma cell line) whole cell extract

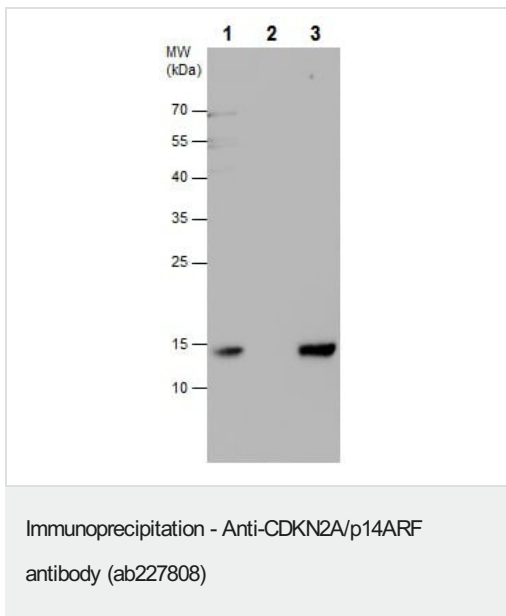
Lysates/proteins at 30 µg per lane.

Secondary

All lanes : HRP-conjugated anti-rabbit IgG

Predicted band size: 14 kDa

15% SDS-PAGE gel.



CDKN2A/p14ARF was immunoprecipitated from HeLa (human epithelial cell line from cervix adenocarcinoma) whole cell extract using 5 µg of ab227808. Western blot was performed from the immunoprecipitate using ab227808. Anti-Rabbit IgG was used as a secondary reagent.

Lane 1: HeLa whole cell extract.

Lane 2: Control IgG IP in HeLa whole cell extract.

Lane 3: ab227808 IP in HeLa whole cell extract.

Please note: All products are "FOR RESEARCH USE ONLY. NOT FOR USE IN DIAGNOSTIC PROCEDURES"

Our Abpromise to you: Quality guaranteed and expert technical support

- Replacement or refund for products not performing as stated on the datasheet
- Valid for 12 months from date of delivery
- Response to your inquiry within 24 hours

- We provide support in Chinese, English, French, German, Japanese and Spanish
- Extensive multi-media technical resources to help you
- We investigate all quality concerns to ensure our products perform to the highest standards

If the product does not perform as described on this datasheet, we will offer a refund or replacement. For full details of the Abpromise, please visit <https://www.abcam.com/abpromise> or contact our technical team.

Terms and conditions

- Guarantee only valid for products bought direct from Abcam or one of our authorized distributors