


Product datasheet

Anti-Cell adhesion molecule 4 antibody ab139395

3 Images

Overview

Product name	Anti-Cell adhesion molecule 4 antibody
Description	Rabbit polyclonal to Cell adhesion molecule 4
Host species	Rabbit
Tested applications	Suitable for: WB, IHC-P, ICC/IF
Species reactivity	Reacts with: Mouse, Human Predicted to work with: Rat 
Immunogen	Synthetic peptide corresponding to Human Cell adhesion molecule 4 aa 339-388 (C terminal).
Positive control	Human thymus tissue, RAW264.7 cells lysates, A549 cells
General notes	<p>The Life Science industry has been in the grips of a reproducibility crisis for a number of years. Abcam is leading the way in addressing this with our range of recombinant monoclonal antibodies and knockout edited cell lines for gold-standard validation. Please check that this product meets your needs before purchasing.</p> <p>If you have any questions, special requirements or concerns, please send us an inquiry and/or contact our Support team ahead of purchase. Recommended alternatives for this product can be found below, along with publications, customer reviews and Q&As</p>

Properties

Form	Liquid
Storage instructions	Shipped at 4°C. Upon delivery aliquot and store at -20°C. Avoid repeated freeze / thaw cycles.
Storage buffer	pH: 7.40 Preservative: 0.02% Sodium azide Constituents: 49% PBS, 0.88% Sodium chloride, 50% Glycerol (glycerin, glycerine)
Purity	PBS without Mg ²⁺ and Ca ²⁺ Immunogen affinity purified
Clonality	Polyclonal
Isotype	IgG

Applications

The Abpromise guarantee

Our **Abpromise guarantee** covers the use of ab139395 in the following tested applications.

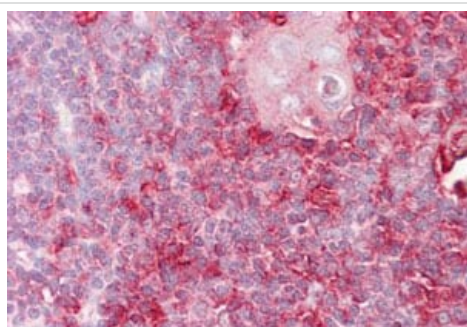
The application notes include recommended starting dilutions; optimal dilutions/concentrations should be determined by the end user.

Application	Abreviews	Notes
WB		1/500 - 1/1000. Predicted molecular weight: 43 kDa.
IHC-P		Use a concentration of 10 µg/ml.
ICC/IF		1/100 - 1/500.

Target

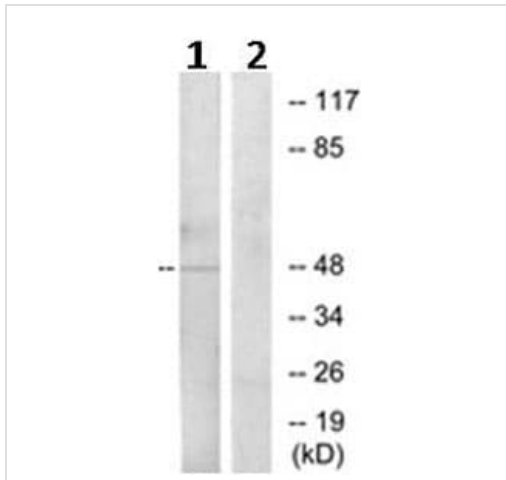
Function	Involved in the cell-cell adhesion. Has calcium- and magnesium-independent cell-cell adhesion activity. May have tumor-suppressor activity.
Tissue specificity	Expressed in brain, prostate, brain, kidney and some other organs.
Sequence similarities	Belongs to the nectin family. Contains 2 Ig-like C2-type (immunoglobulin-like) domains. Contains 1 Ig-like V-type (immunoglobulin-like) domain.
Post-translational modifications	N-glycosylated.
Cellular localization	Membrane.

Images



Immunohistochemical analysis of paraffin embedded Human thymus tissue labelled with ab139395 at 10 µg/ml.

Immunohistochemistry (Formalin/PFA-fixed paraffin-embedded sections) - Anti-Cell adhesion molecule 4 antibody (ab139395)



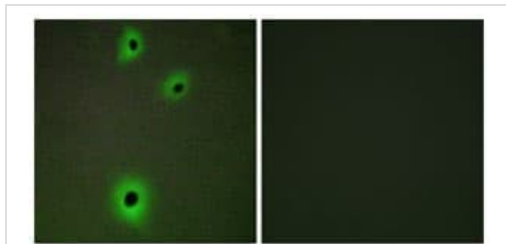
Western blot - Anti-Cell adhesion molecule 4 antibody (ab139395)

All lanes : Anti-Cell adhesion molecule 4 antibody (ab139395) at 1/500 dilution

Lane 1 : RAW264.7 cell lysates

Lane 2 : RAW264.7 cell lysate treated with the synthesized peptide.

Predicted band size: 43 kDa



Immunocytochemistry/ Immunofluorescence - Anti-Cell adhesion molecule 4 antibody (ab139395)

Immunofluorescence analysis of A549 cells labelled with ab139395 at 1/100 dilution.

Please note: All products are "FOR RESEARCH USE ONLY. NOT FOR USE IN DIAGNOSTIC PROCEDURES"

Our Abpromise to you: Quality guaranteed and expert technical support

- Replacement or refund for products not performing as stated on the datasheet
- Valid for 12 months from date of delivery
- Response to your inquiry within 24 hours
- We provide support in Chinese, English, French, German, Japanese and Spanish
- Extensive multi-media technical resources to help you
- We investigate all quality concerns to ensure our products perform to the highest standards

If the product does not perform as described on this datasheet, we will offer a refund or replacement. For full details of the Abpromise, please visit <https://www.abcam.com/abpromise> or contact our technical team.

Terms and conditions

- Guarantee only valid for products bought direct from Abcam or one of our authorized distributors