

Product datasheet

Anti-CELSR1 antibody ab196600

★★★★★ [2 Abreviews](#) [1 References](#) [1 Image](#)

Overview

Product name	Anti-CELSR1 antibody
Description	Rabbit polyclonal to CELSR1
Host species	Rabbit
Tested applications	Suitable for: ICC/IF
Species reactivity	Reacts with: Human
Immunogen	Synthetic peptide within Human CELSR1 (internal sequence). The exact sequence is proprietary. Database link: Q9NYQ6
Positive control	MCF7 cells
General notes	<p>The Life Science industry has been in the grips of a reproducibility crisis for a number of years. Abcam is leading the way in addressing this with our range of recombinant monoclonal antibodies and knockout edited cell lines for gold-standard validation. Please check that this product meets your needs before purchasing.</p> <p>If you have any questions, special requirements or concerns, please send us an inquiry and/or contact our Support team ahead of purchase. Recommended alternatives for this product can be found below, along with publications, customer reviews and Q&As</p>

Properties

Form	Liquid
Storage instructions	Shipped at 4°C. Store at +4°C short term (1-2 weeks). Upon delivery aliquot. Store at -20°C long term. Avoid freeze / thaw cycle.
Storage buffer	pH: 7.40 Preservative: 0.02% Sodium azide Constituents: 50% Glycerol (glycerin, glycerine), 0.87% Sodium chloride, 49% PBS PBS is without Mg ²⁺ and Ca ²⁺
Purity	Immunogen affinity purified
Clonality	Polyclonal
Isotype	IgG

Applications

The Abpromise guarantee Our **Abpromise guarantee** covers the use of ab196600 in the following tested applications. The application notes include recommended starting dilutions; optimal dilutions/concentrations should be determined by the end user.

Application	Abreviews	Notes
ICC/IF		1/100 - 1/500.

Target

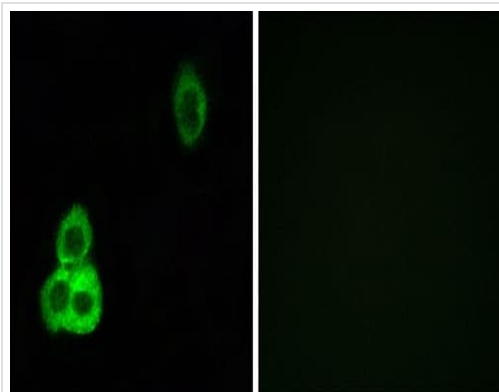
Relevance

CELSR1 is a member of the flamingo subfamily, part of the cadherin superfamily. The flamingo subfamily consists of nonclassic type cadherins; a subpopulation that does not interact with catenins. The flamingo cadherins are located at the plasma membrane and have nine cadherin domains, seven epidermal growth factor like repeats and two laminin A G type repeats in their ectodomain. They also have seven transmembrane domains, a characteristic unique to this subfamily. It is postulated that these proteins are receptors involved in contact mediated communication, with cadherin domains acting as homophilic binding regions and the EGF like domains involved in cell adhesion and receptor ligand interactions. This particular member is a developmentally regulated, neural specific gene which plays an unspecified role in early embryogenesis. ESTs have been isolated from B-cell/lung/testis, breast, brain, colon, embryo, head/neck, heart, heart/melanocyte/uterus, kidney, lung, lymph node, placenta, and tonsil libraries.

Cellular localization

Integral membrane protein

Images



Immunofluorescence analysis of MCF-7 cells, labeling CELSR1 with ab196600 at 1/100 dilution.

Immunocytochemistry/ Immunofluorescence - Anti-CELSR1 antibody (ab196600)

Please note: All products are "FOR RESEARCH USE ONLY. NOT FOR USE IN DIAGNOSTIC PROCEDURES"

Our Abpromise to you: Quality guaranteed and expert technical support

- Replacement or refund for products not performing as stated on the datasheet
- Valid for 12 months from date of delivery

- Response to your inquiry within 24 hours
- We provide support in Chinese, English, French, German, Japanese and Spanish
- Extensive multi-media technical resources to help you
- We investigate all quality concerns to ensure our products perform to the highest standards

If the product does not perform as described on this datasheet, we will offer a refund or replacement. For full details of the Abpromise, please visit <https://www.abcam.com/abpromise> or contact our technical team.

Terms and conditions

- Guarantee only valid for products bought direct from Abcam or one of our authorized distributors