

Anti-CENPH antibody ab88593

[2 References](#) [5 Images](#)

Overview

Product name	Anti-CENPH antibody
Description	Mouse polyclonal to CENPH
Host species	Mouse
Tested applications	Suitable for: WB, ICC/IF
Species reactivity	Reacts with: Mouse, Human
Immunogen	Recombinant full length protein within Human CENPH aa 1-250. The exact immunogen sequence used to generate this antibody is proprietary information. If additional detail on the immunogen is needed to determine the suitability of the antibody for your needs, please contact our Scientific Support team to discuss your requirements.
Positive control	HeLa cell lysate. Raw 264.7 cell lysate. NIH/3T3 cell lysate. Lysate from transfected 293T cells. HeLa cells.
General notes	<p>The Life Science industry has been in the grips of a reproducibility crisis for a number of years. Abcam is leading the way in addressing this with our range of recombinant monoclonal antibodies and knockout edited cell lines for gold-standard validation. Please check that this product meets your needs before purchasing.</p> <p>If you have any questions, special requirements or concerns, please send us an inquiry and/or contact our Support team ahead of purchase. Recommended alternatives for this product can be found below, along with publications, customer reviews and Q&As</p>

Properties

Form	Liquid
Storage instructions	Shipped at 4°C. Upon delivery aliquot and store at -20°C or -80°C. Avoid repeated freeze / thaw cycles.
Storage buffer	pH: 7.4 Constituent: PBS
Purity	Protein A purified
Clonality	Polyclonal
Isotype	IgG

Applications

The Abpromise guarantee

Our **Abpromise guarantee** covers the use of ab88593 in the following tested applications.

The application notes include recommended starting dilutions; optimal dilutions/concentrations should be determined by the end user.

Application	Abreviews	Notes
WB		Use a concentration of 1 - 5 µg/ml. Predicted molecular weight: 28 kDa.
ICC/IF		Use a concentration of 10 µg/ml.

Target

Function

Component of the CENPA-NAC (nucleosome-associated) complex, a complex that plays a central role in assembly of kinetochore proteins, mitotic progression and chromosome segregation. The CENPA-NAC complex recruits the CENPA-CAD (nucleosome distal) complex and may be involved in incorporation of newly synthesized CENPA into centromeres. Required for chromosome congression and efficiently align the chromosomes on a metaphase plate.

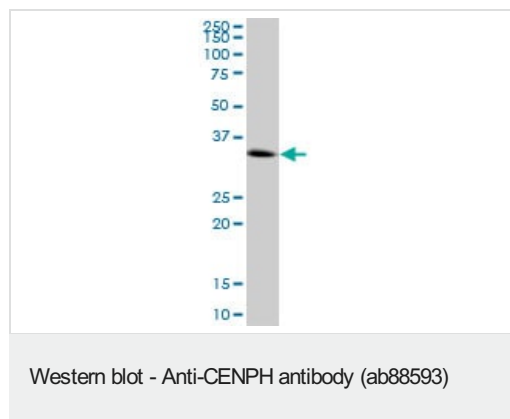
Sequence similarities

Belongs to the centromere protein H family.

Cellular localization

Nucleus. Chromosome > centromere > kinetochore. Associates with active centromere-kinetochore complexes throughout the cell cycle. Colocalizes with inner kinetochore plate proteins CENPA and CENPC1 during both interphase and metaphase.

Images

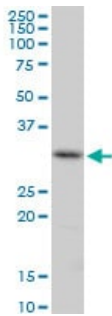


Anti-CENPH antibody (ab88593) at 5 µg/ml + HeLa cell lysate at 25 µg

Developed using the ECL technique.

Predicted band size: 28 kDa

Observed band size: 28 kDa



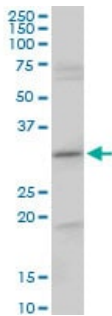
Western blot - Anti-CENPH antibody (ab88593)

Anti-CENPH antibody (ab88593) at 5 µg/ml + Raw 264.7 cell lysate at 25 µg

Developed using the ECL technique.

Predicted band size: 28 kDa

Observed band size: 28 kDa



Western blot - Anti-CENPH antibody (ab88593)

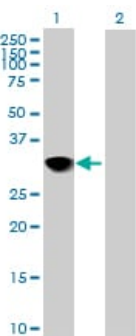
Anti-CENPH antibody (ab88593) at 5 µg/ml + NIH/3T3 cell lysate at 25 µg

Developed using the ECL technique.

Predicted band size: 28 kDa

Observed band size: 28 kDa

Additional bands at: ~19 kDa, ~60 kDa, ~70 kDa. We are unsure as to the identity of these extra bands.



Western blot - Anti-CENPH antibody (ab88593)

All lanes : Anti-CENPH antibody (ab88593) at 5 µg/ml

Lane 1 : cell lysate from CENPH transfected 293T cells

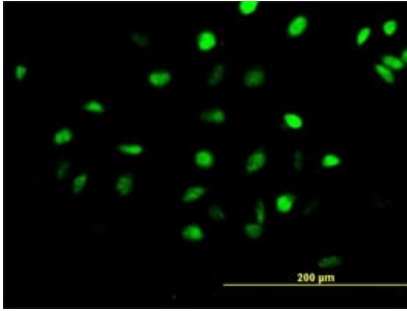
Lane 2 : cell lysate from non transfected 293T cells

Lysates/proteins at 25 µg per lane.

Developed using the ECL technique.

Predicted band size: 28 kDa

Observed band size: 28 kDa



ab88593 at 10 µg/ml detecting CENPH in HeLa cells by immunofluorescence.

Immunocytochemistry/ Immunofluorescence - Anti-CENPH antibody (ab88593)

Please note: All products are "FOR RESEARCH USE ONLY. NOT FOR USE IN DIAGNOSTIC PROCEDURES"

Our Abpromise to you: Quality guaranteed and expert technical support

- Replacement or refund for products not performing as stated on the datasheet
- Valid for 12 months from date of delivery
- Response to your inquiry within 24 hours
- We provide support in Chinese, English, French, German, Japanese and Spanish
- Extensive multi-media technical resources to help you
- We investigate all quality concerns to ensure our products perform to the highest standards

If the product does not perform as described on this datasheet, we will offer a refund or replacement. For full details of the Abpromise, please visit <https://www.abcam.com/abpromise> or contact our technical team.

Terms and conditions

- Guarantee only valid for products bought direct from Abcam or one of our authorized distributors