


Product datasheet

Anti-CEP170 antibody ab84545

[3 References](#) [2 Images](#)

Overview

Product name	Anti-CEP170 antibody
Description	Rabbit polyclonal to CEP170
Host species	Rabbit
Tested applications	Suitable for: ICC/IF
Species reactivity	Reacts with: Human Predicted to work with: Rabbit, Cow, Chimpanzee 
Immunogen	Synthetic peptide within Human CEP170 aa 1500 to the C-terminus. The exact immunogen sequence used to generate this antibody is proprietary information. If additional detail on the immunogen is needed to determine the suitability of the antibody for your needs, please contact our Scientific Support team to discuss your requirements. NP_055627.2 Database link: Q5SW79
Positive control	HeLa cells.
General notes	<p>The Life Science industry has been in the grips of a reproducibility crisis for a number of years. Abcam is leading the way in addressing this with our range of recombinant monoclonal antibodies and knockout edited cell lines for gold-standard validation. Please check that this product meets your needs before purchasing.</p> <p>If you have any questions, special requirements or concerns, please send us an inquiry and/or contact our Support team ahead of purchase. Recommended alternatives for this product can be found below, along with publications, customer reviews and Q&As</p>

Properties

Form	Liquid
Storage instructions	Shipped at 4°C. Upon delivery aliquot and store at -20°C. Avoid freeze / thaw cycles.
Storage buffer	pH: 6.8 Preservative: 0.09% Sodium azide Constituents: 0.1% BSA, Tris buffered saline
Purity	Immunogen affinity purified
Clonality	Polyclonal
Isotype	IgG

Applications

The Abpromise guarantee

Our **Abpromise guarantee** covers the use of ab84545 in the following tested applications.

The application notes include recommended starting dilutions; optimal dilutions/concentrations should be determined by the end user.

Application	Abreviews	Notes
ICC/IF		1/100 - 1/500. Permeabilization with Triton-X 100 is recommended.

Target

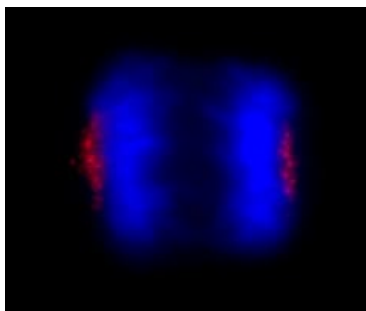
Relevance

CEP170, centrosomal protein 170kDa, plays a role in microtubule organization. During interphase, the encoded protein localizes to the sub-distal appendages of mature centrioles, which are microtubule-based structures thought to help organize centrosomes. During mitosis, the protein associates with spindle microtubules near the centrosomes.

Cellular localization

Centrosome, centriole. Cytoplasm, cytoskeleton. Associated with the mature mother centriole. Associated with spindle microtubules during mitosis.

Images



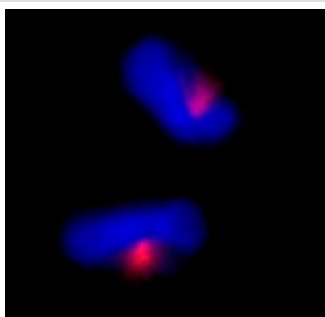
Immunocytochemistry/ Immunofluorescence - Anti-CEP170 antibody (ab84545)

Detection of Human CEP170 by Immunocytochemistry.

Sample: NBF-fixed asynchronous HeLa cells.

Antibody: ab84545 used at a dilution of 1/100.

Detection: Red-fluorescent Alexa Fluor 594 goat anti-rabbit IgG.



Immunocytochemistry/ Immunofluorescence - Anti-CEP170 antibody (ab84545)

Detection of Human CEP170 by Immunocytochemistry.

Sample: NBF-fixed asynchronous HeLa cells.

Antibody: ab84545 used at a dilution of 1/100.

Detection: Red-fluorescent Alexa Fluor 594 goat anti-rabbit IgG.

Please note: All products are "FOR RESEARCH USE ONLY. NOT FOR USE IN DIAGNOSTIC PROCEDURES"

Our Abpromise to you: Quality guaranteed and expert technical support

- Replacement or refund for products not performing as stated on the datasheet
- Valid for 12 months from date of delivery
- Response to your inquiry within 24 hours

- We provide support in Chinese, English, French, German, Japanese and Spanish
- Extensive multi-media technical resources to help you
- We investigate all quality concerns to ensure our products perform to the highest standards

If the product does not perform as described on this datasheet, we will offer a refund or replacement. For full details of the Abpromise, please visit <https://www.abcam.com/abpromise> or contact our technical team.

Terms and conditions

- Guarantee only valid for products bought direct from Abcam or one of our authorized distributors