


Product datasheet

Anti-CEP57 antibody ab104010

2 Images

Overview

Product name	Anti-CEP57 antibody
Description	Rabbit polyclonal to CEP57
Host species	Rabbit
Tested applications	Suitable for: WB, IHC-P
Species reactivity	Reacts with: Human Predicted to work with: Mouse, Rat, Cow 
Immunogen	Recombinant fragment, corresponding to a region within amino acids 86-251 of Human CEP57 (AAH01233).
Positive control	NT2D1 whole cell lysate; NCI-N87 xenograft; MCF-7 cell lysate
General notes	<p>The Life Science industry has been in the grips of a reproducibility crisis for a number of years. Abcam is leading the way in addressing this with our range of recombinant monoclonal antibodies and knockout edited cell lines for gold-standard validation. Please check that this product meets your needs before purchasing.</p> <p>If you have any questions, special requirements or concerns, please send us an inquiry and/or contact our Support team ahead of purchase. Recommended alternatives for this product can be found below, along with publications, customer reviews and Q&As</p>

Properties

Form	Liquid
Storage instructions	Shipped at 4°C. Upon delivery aliquot. Store at -20°C or -80°C. Avoid freeze / thaw cycle.
Storage buffer	pH: 7.00 Preservative: 0.01% Thimerosal (merthiolate) Constituents: 1.21% Tris, 0.75% Glycine, 20% Glycerol (glycerin, glycerine)
Purity	Immunogen affinity purified
Clonality	Polyclonal
Isotype	IgG

Applications

The Abpromise guarantee

Our **Abpromise guarantee** covers the use of ab104010 in the following tested applications.

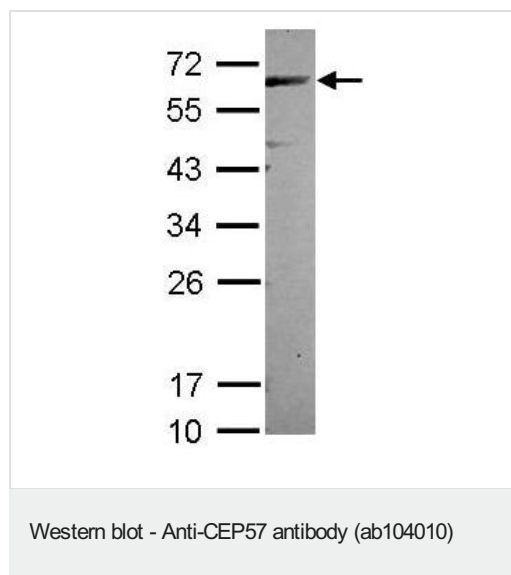
The application notes include recommended starting dilutions; optimal dilutions/concentrations should be determined by the end user.

Application	Abreviews	Notes
WB		1/500 - 1/3000. Predicted molecular weight: 57 kDa.
IHC-P		1/100 - 1/500. Heat mediated antigen retrieval using 10mM Citrate buffer or Tris-EDTA buffer (pH8.0) is recommended.

Target

Function	Centrosomal protein which may be required for microtubule attachment to centrosomes. May act by forming ring-like structures around microtubules. Mediates nuclear translocation and mitogenic activity of the internalized growth factor FGF2.
Tissue specificity	Ubiquitous.
Sequence similarities	Belongs to the translokin family.
Domain	The C-terminal region mediates the interaction with microtubules and is able to nucleate and bundles microtubules in vitro. The centrosome localization domain (CLD) region mediates the localization to centrosomes and homooligomerization.
Cellular localization	Nucleus. Cytoplasm. Cytoplasm > cytoskeleton > centrosome.

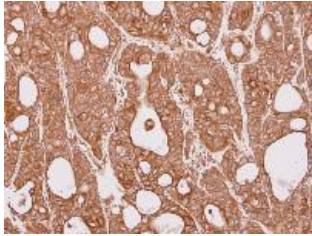
Images



Anti-CEP57 antibody (ab104010) at 1/3000 dilution + NT2D1 whole cell lysate at 30 µg

Predicted band size: 57 kDa

12% SDS-PAGE



ab104010, at 1/100 dilution, staining CEP57 in paraffin-embedded NCI-N87 xenograft by Immunohistochemistry.

Immunohistochemistry (Formalin/PFA-fixed paraffin-embedded sections) - Anti-CEP57 antibody (ab104010)

Please note: All products are "FOR RESEARCH USE ONLY. NOT FOR USE IN DIAGNOSTIC PROCEDURES"

Our Abpromise to you: Quality guaranteed and expert technical support

- Replacement or refund for products not performing as stated on the datasheet
- Valid for 12 months from date of delivery
- Response to your inquiry within 24 hours
- We provide support in Chinese, English, French, German, Japanese and Spanish
- Extensive multi-media technical resources to help you
- We investigate all quality concerns to ensure our products perform to the highest standards

If the product does not perform as described on this datasheet, we will offer a refund or replacement. For full details of the Abpromise, please visit <https://www.abcam.com/abpromise> or contact our technical team.

Terms and conditions

- Guarantee only valid for products bought direct from Abcam or one of our authorized distributors