




Product datasheet

Anti-Ceramide synthase 1/LAG1 antibody ab85696

1 Image

Overview

Product name	Anti-Ceramide synthase 1/LAG1 antibody
Description	Goat polyclonal to Ceramide synthase 1/LAG1
Host species	Goat
Specificity	ab85696 is expected to recognize both reported isoforms (NP_067090.1 and NP_937850.1).
Tested applications	Suitable for: WB
Species reactivity	Reacts with: Human Predicted to work with: Mouse, Rat, Cow 
Immunogen	Synthetic peptide corresponding to Human Ceramide synthase 1/LAG1 aa 318-329 (internal sequence). (NP_937850.1) Sequence: C-KDLREYDTAEAQ Database link: NP_067090.1  Run BLAST with  Run BLAST with
Positive control	Human brain (cerebellum, cerebral cortex and frontal cortex) lysates.
General notes	<p>The Life Science industry has been in the grips of a reproducibility crisis for a number of years. Abcam is leading the way in addressing this with our range of recombinant monoclonal antibodies and knockout edited cell lines for gold-standard validation. Please check that this product meets your needs before purchasing.</p> <p>If you have any questions, special requirements or concerns, please send us an inquiry and/or contact our Support team ahead of purchase. Recommended alternatives for this product can be found below, along with publications, customer reviews and Q&As</p>

Properties

Form	Liquid
Storage instructions	Shipped at 4°C. Upon delivery aliquot and store at -20°C. Avoid freeze / thaw cycles.
Storage buffer	pH: 7.30 Preservative: 0.02% Sodium azide Constituents: 0.5% Tris buffered saline, 0.5% BSA
Purity	Immunogen affinity purified

Purification notes	ab85696 was purified from goat serum by ammonium sulphate precipitation followed by antigen affinity chromatography using the immunizing peptide.
Clonality	Polyclonal
Isotype	IgG

Applications

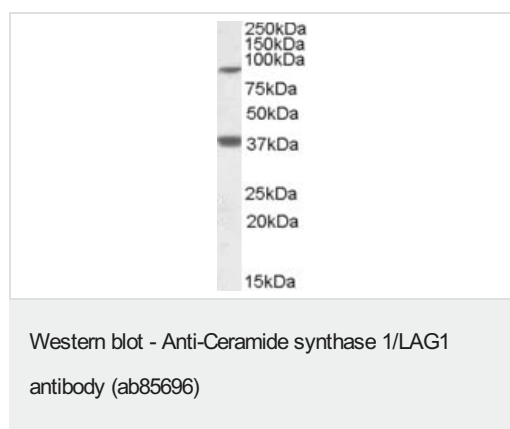
The Abpromise guarantee Our **Abpromise guarantee** covers the use of ab85696 in the following tested applications. The application notes include recommended starting dilutions; optimal dilutions/concentrations should be determined by the end user.

Application	Abreviews	Notes
WB		Use a concentration of 1 - 3 µg/ml. Detects a band of approximately 37 kDa (predicted molecular weight: 38 kDa). Calculated MW of 38.0 kDa according to NP_937850.1. An additional band of unknown identity was also consistently observed at 85 kDa. This band was successfully blocked by incubation with the immunising peptide. 1 hour primary incubation is recommended for this product.

Target

Function	May be either a bona fide (dihydro)ceramide synthase or a modulator of its activity. When overexpressed in cells is involved in the production of sphingolipids containing mainly one fatty acid donor (N-linked stearyl- (C18) ceramide) in a fumonisin B1-independent manner.
Sequence similarities	Contains 1 TLC (TRAM/LAG1/CLN8) domain.
Cellular localization	Endoplasmic reticulum membrane and Endoplasmic reticulum membrane. Golgi apparatus membrane. Isoform 1 may recycle from the Golgi to the endoplasmic reticulum.

Images



Anti-Ceramide synthase 1/LAG1 antibody (ab85696) at 1 µg/ml + Human Frontal cortex lysate (in RIPA buffer) at 35 µg

Predicted band size: 38 kDa

Observed band size: 37 kDa

Additional bands at: 85 kDa. We are unsure as to the identity of these extra bands.

Primary incubation was 1 hour. Detected by chemiluminescence.

An additional band of unknown identity was consistently observed at

85 kDa. This band was successfully blocked by incubation with the immunising peptide.

Please note: All products are "FOR RESEARCH USE ONLY. NOT FOR USE IN DIAGNOSTIC PROCEDURES"

Our Abpromise to you: Quality guaranteed and expert technical support

- Replacement or refund for products not performing as stated on the datasheet
- Valid for 12 months from date of delivery
- Response to your inquiry within 24 hours
- We provide support in Chinese, English, French, German, Japanese and Spanish
- Extensive multi-media technical resources to help you
- We investigate all quality concerns to ensure our products perform to the highest standards

If the product does not perform as described on this datasheet, we will offer a refund or replacement. For full details of the Abpromise, please visit <https://www.abcam.com/abpromise> or contact our technical team.

Terms and conditions

- Guarantee only valid for products bought direct from Abcam or one of our authorized distributors