

Product datasheet

Anti-Ceruloplasmin antibody [EPSISR6-42] ab157452

Recombinant RabMAb

[1 References](#) [3 Images](#)

Overview

Product name	Anti-Ceruloplasmin antibody [EPSISR6-42]
Description	Rabbit monoclonal [EPSISR6-42] to Ceruloplasmin
Host species	Rabbit
Tested applications	Suitable for: ICC/IF, WB Unsuitable for: IHC-P or IP
Species reactivity	Reacts with: Human
Immunogen	Synthetic peptide. This information is proprietary to Abcam and/or its suppliers.
Positive control	Human plasma and serum; HepG2 cells.
General notes	<p>This product is a recombinant monoclonal antibody, which offers several advantages including:</p> <ul style="list-style-type: none"> - High batch-to-batch consistency and reproducibility - Improved sensitivity and specificity - Long-term security of supply - Animal-free production <p>For more information see here.</p> <p>Our RabMAb[®] technology is a patented hybridoma-based technology for making rabbit monoclonal antibodies. For details on our patents, please refer to RabMAb[®] patents.</p> <p>Mouse, Rat: We have preliminary internal testing data to indicate this antibody may not react with these species. Please contact us for more information.</p>

Properties

Form	Liquid
Storage instructions	Shipped at 4°C. Store at -20°C.
Storage buffer	pH: 7.2 Preservative: 0.01% Sodium azide Constituents: 40% Glycerol (glycerin, glycerine), 0.05% BSA, 9% PBS
Purity	Protein A purified
Clonality	Monoclonal
Clone number	EPSISR6-42

Isotype

IgG

Applications

The Abpromise guarantee

Our **Abpromise guarantee** covers the use of ab157452 in the following tested applications.

The application notes include recommended starting dilutions; optimal dilutions/concentrations should be determined by the end user.

Application	Abreviews	Notes
ICC/IF		1/100 - 1/250.
WB		1/1000 - 1/5000. Predicted molecular weight: 122 kDa.

Application notes

Is unsuitable for IHC-P or IP.

Target

Function

Ceruloplasmin is a blue, copper-binding (6-7 atoms per molecule) glycoprotein. It has ferroxidase activity oxidizing Fe(2+) to Fe(3+) without releasing radical oxygen species. It is involved in iron transport across the cell membrane.

Tissue specificity

Expressed by the liver and secreted in plasma.

Involvement in disease

Defects in CP are the cause of aceruloplasminemia (ACERULOP) [MIM:604290]. It is an autosomal recessive disorder of iron metabolism characterized by iron accumulation in the brain as well as visceral organs. Clinical features consist of the triad of retinal degeneration, diabetes mellitus and neurological disturbances.

Note=Ceruloplasmin levels are decreased in Wilson disease, in which copper cannot be incorporated into ceruloplasmin in liver because of defects in the copper-transporting ATPase 2.

Sequence similarities

Belongs to the multicopper oxidase family.

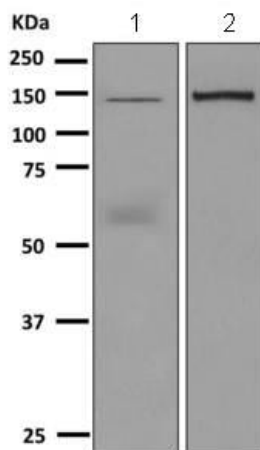
Contains 3 F5/8 type A domains.

Contains 6 plastocyanin-like domains.

Cellular localization

Secreted.

Images



Western blot - Anti-Ceruloplasmin antibody
[EPSISR6-42] (ab157452)

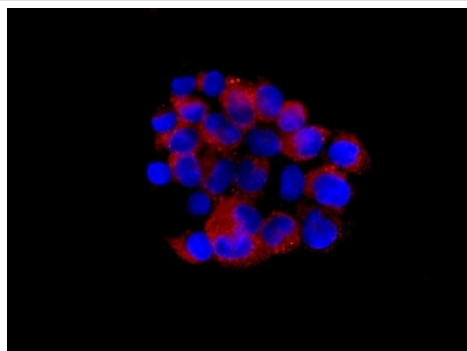
All lanes : Anti-Ceruloplasmin antibody [EPSISR6-42] (ab157452)
at 1/1000 dilution

Lane 1 : Human plasma cell lysate

Lane 2 : Human serum cell lysate

Lysates/proteins at 10 µg per lane.

Predicted band size: 122 kDa



Immunocytochemistry/ Immunofluorescence - Anti-
Ceruloplasmin antibody [EPSISR6-42] (ab157452)

Immunofluorescent analysis of HepG2 cells labeling Ceruloplasmin
with ab157452 at 1/100 dilution.

Why choose a
recombinant antibody?



**Research with
confidence**
Consistent and
reproducible results



**Long-term and
scalable supply**
Recombinant
technology



**Success from the
first experiment**
Confirmed
specificity



**Ethical standards
compliant**
Animal-free
production

Anti-Ceruloplasmin antibody [EPSISR6-42]
(ab157452)

Please note: All products are "FOR RESEARCH USE ONLY. NOT FOR USE IN DIAGNOSTIC PROCEDURES"

Our Abpromise to you: Quality guaranteed and expert technical support

- Replacement or refund for products not performing as stated on the datasheet
- Valid for 12 months from date of delivery
- Response to your inquiry within 24 hours

- We provide support in Chinese, English, French, German, Japanese and Spanish
- Extensive multi-media technical resources to help you
- We investigate all quality concerns to ensure our products perform to the highest standards

If the product does not perform as described on this datasheet, we will offer a refund or replacement. For full details of the Abpromise, please visit <https://www.abcam.com/abpromise> or contact our technical team.

Terms and conditions

- Guarantee only valid for products bought direct from Abcam or one of our authorized distributors