

Product datasheet

Anti-CES2 antibody ab88439

[2 Images](#)

Overview

Product name	Anti-CES2 antibody
Description	Mouse polyclonal to CES2
Host species	Mouse
Tested applications	Suitable for: WB
Species reactivity	Reacts with: Human
Immunogen	Recombinant full length protein corresponding to Human CES2 aa 1-650. Full length protein, corresponding to amino acids 1-623 of Human CES2 (NP_003860.2).
Positive control	Human liver tissue lysate and cell lysate from CES2 transfected 293T cells.
General notes	<p>The Life Science industry has been in the grips of a reproducibility crisis for a number of years. Abcam is leading the way in addressing this with our range of recombinant monoclonal antibodies and knockout edited cell lines for gold-standard validation. Please check that this product meets your needs before purchasing.</p> <p>If you have any questions, special requirements or concerns, please send us an inquiry and/or contact our Support team ahead of purchase. Recommended alternatives for this product can be found below, along with publications, customer reviews and Q&As</p>

Properties

Form	Liquid
Storage instructions	Shipped at 4°C. Upon delivery aliquot and store at -20°C. Avoid repeated freeze / thaw cycles.
Storage buffer	pH: 7.4 Constituent: PBS
Purity	Protein A purified
Clonality	Polyclonal
Isotype	IgG

Applications

The Abpromise guarantee Our **Abpromise guarantee** covers the use of ab88439 in the following tested applications. The application notes include recommended starting dilutions; optimal dilutions/concentrations should be determined by the end user.

Application	Abreviews	Notes
WB		Use a concentration of 1 µg/ml. Predicted molecular weight: 62 kDa.

Target

Function

Involved in the detoxification of xenobiotics and in the activation of ester and amide prodrugs. Shows high catalytic efficiency for hydrolysis of cocaine, 4-methyumbelliferyl acetate, heroin and 6-monoacetylmorphine.

Tissue specificity

Preferentially expressed in intestine with moderate expression in liver. Within the intestine, highest expression is found in small intestine with lower expression in colon and rectum.

Sequence similarities

Belongs to the type-B carboxylesterase/lipase family.

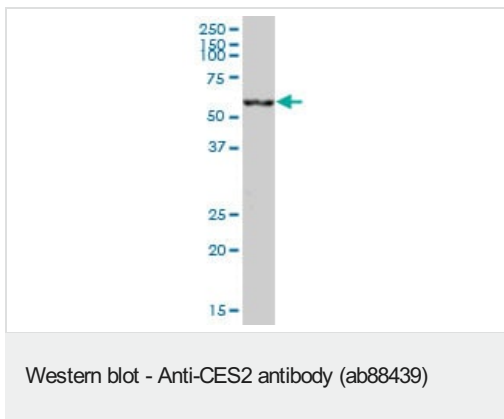
Post-translational modifications

Glycosylated.

Cellular localization

Endoplasmic reticulum lumen.

Images

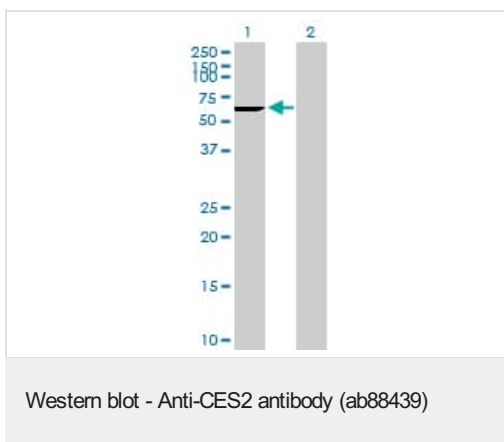


Anti-CES2 antibody (ab88439) at 1 µg/ml + human liver tissue lysate at 25 µg

Developed using the ECL technique.

Predicted band size: 62 kDa

Observed band size: 62 kDa



All lanes : Anti-CES2 antibody (ab88439) at 1 µg/ml

Lane 1 : cell lysate from CES2 transfected 293T cells

Lane 2 : cell lysate from non transfected 293 T cells

Lysates/proteins at 25 µg per lane.

Developed using the ECL technique.

Predicted band size: 62 kDa

Observed band size: 62 kDa

Please note: All products are "FOR RESEARCH USE ONLY. NOT FOR USE IN DIAGNOSTIC PROCEDURES"

Our Abpromise to you: Quality guaranteed and expert technical support

- Replacement or refund for products not performing as stated on the datasheet
- Valid for 12 months from date of delivery
- Response to your inquiry within 24 hours

- We provide support in Chinese, English, French, German, Japanese and Spanish
- Extensive multi-media technical resources to help you
- We investigate all quality concerns to ensure our products perform to the highest standards

If the product does not perform as described on this datasheet, we will offer a refund or replacement. For full details of the Abpromise, please visit <https://www.abcam.com/abpromise> or contact our technical team.

Terms and conditions

- Guarantee only valid for products bought direct from Abcam or one of our authorized distributors