

# Anti-CETP antibody ab19012

[5 References](#) [1 Image](#)

### Overview

<b>Product name</b>	Anti-CETP antibody
<b>Description</b>	Rabbit polyclonal to CETP
<b>Host species</b>	Rabbit
<b>Specificity</b>	This antibody recognises CETB (70 kDa).
<b>Tested applications</b>	<b>Suitable for:</b> WB
<b>Species reactivity</b>	<b>Reacts with:</b> Human
<b>Immunogen</b>	Synthetic peptide corresponding to Human CETP (N terminal). Immunogen is around amino acid 153. Database link: <a href="#">P11597</a>
<b>Positive control</b>	WB: Jurkat cell lysate
<b>General notes</b>	<p>This product is manufactured by BioVision, an Abcam company and was previously called 3413 CETP Antibody. 3413-100 is the same size as the 100 µg size of ab19012.</p> <p>The Life Science industry has been in the grips of a reproducibility crisis for a number of years. Abcam is leading the way in addressing this with our range of recombinant monoclonal antibodies and knockout edited cell lines for gold-standard validation. Please check that this product meets your needs before purchasing.</p> <p>If you have any questions, special requirements or concerns, please send us an inquiry and/or contact our Support team ahead of purchase. Recommended alternatives for this product can be found below, along with publications, customer reviews and Q&amp;As</p>

### Properties

<b>Form</b>	Liquid
<b>Storage instructions</b>	Shipped at 4°C. Upon delivery aliquot and store at -20°C or -80°C. Avoid repeated freeze / thaw cycles.
<b>Storage buffer</b>	pH: 7.2 Preservative: 0.02% Sodium azide Constituents: PBS, 50% Glycerol (glycerin, glycerine), 1% BSA
<b>Clonality</b>	Polyclonal
<b>Isotype</b>	IgG

## Applications

### The Abpromise guarantee

Our **Abpromise guarantee** covers the use of ab19012 in the following tested applications.

The application notes include recommended starting dilutions; optimal dilutions/concentrations should be determined by the end user.

Application	Abreviews	Notes
WB		Use a concentration of 0.5 - 4 µg/ml. Predicted molecular weight: 70 kDa.

## Target

### Function

Involved in the transfer of insoluble cholesteryl esters in the reverse transport of cholesterol.

### Tissue specificity

Expressed by the liver and secreted in plasma.

### Involvement in disease

Defects in CETP are a cause of hyperalphalipoproteinemia (HYPALIP) [MIM:143470]. Affected individuals show high levels of alpha-lipoprotein (high density lipoprotein/HDL).  
Defects in CETP are the cause of cholesteryl ester transfer protein deficiency (CETP deficiency) [MIM:607322]. This is an autosomal dominant condition associated with increased HDL cholesterol levels.

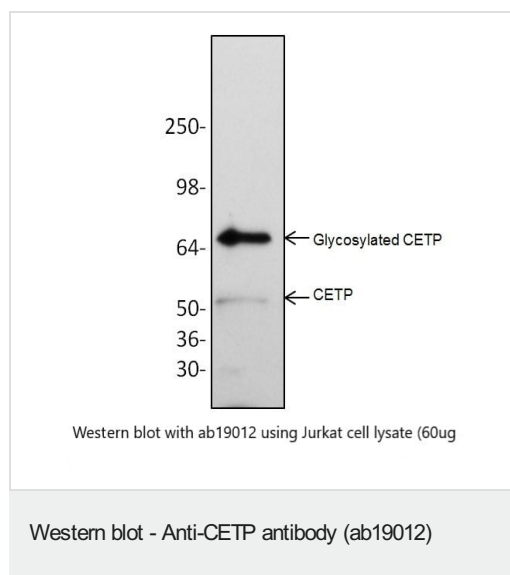
### Sequence similarities

Belongs to the BPI/LBP/Plunc superfamily. BPI/LBP family.

### Cellular localization

Secreted > extracellular space.

## Images



Anti-CETP antibody (ab19012) (0.5-4 mg/ml) + Jurkat cell lysate at 60 µg

**Predicted band size:** 70 kDa

The antibody recognizes 54 kDa CETP and the 70 kDa mature glycosylated form of CETP

**Please note:** All products are "FOR RESEARCH USE ONLY. NOT FOR USE IN DIAGNOSTIC PROCEDURES"

## Our Abpromise to you: Quality guaranteed and expert technical support

- Replacement or refund for products not performing as stated on the datasheet

- Valid for 12 months from date of delivery
- Response to your inquiry within 24 hours
- We provide support in Chinese, English, French, German, Japanese and Spanish
- Extensive multi-media technical resources to help you
- We investigate all quality concerns to ensure our products perform to the highest standards

If the product does not perform as described on this datasheet, we will offer a refund or replacement. For full details of the Abpromise, please visit <https://www.abcam.com/abpromise> or contact our technical team.

#### **Terms and conditions**

---

- Guarantee only valid for products bought direct from Abcam or one of our authorized distributors