

Product datasheet

Anti-CGA/hCG alpha antibody ab196505

[2 Images](#)

Overview

Product name	Anti-CGA/hCG alpha antibody
Description	Rabbit polyclonal to CGA/hCG alpha
Host species	Rabbit
Tested applications	Suitable for: WB, ICC/IF, IHC-P
Species reactivity	Reacts with: Human
Immunogen	Recombinant full length protein corresponding to Human CGA/hCG alpha aa 1 to the C-terminus. Database link: P01215 Run BLAST with Run BLAST with
Positive control	JAR cell lysate, HepG2 cells.
General notes	<p>The Life Science industry has been in the grips of a reproducibility crisis for a number of years. Abcam is leading the way in addressing this with our range of recombinant monoclonal antibodies and knockout edited cell lines for gold-standard validation. Please check that this product meets your needs before purchasing.</p> <p>If you have any questions, special requirements or concerns, please send us an inquiry and/or contact our Support team ahead of purchase. Recommended alternatives for this product can be found below, along with publications, customer reviews and Q&As</p>

Properties

Form	Liquid
Storage instructions	Shipped at 4°C. Store at +4°C short term (1-2 weeks). Upon delivery aliquot. Store at -20°C long term. Avoid freeze / thaw cycle.
Storage buffer	pH: 7.40 Preservative: 0.02% Sodium azide Constituents: 49% PBS, 0.87% Sodium chloride, 50% Glycerol (glycerin, glycerine) PBS is without Mg ²⁺ and Ca ²⁺
Purity	Immunogen affinity purified
Clonality	Polyclonal
Isotype	IgG

Applications

The Abpromise guarantee

Our **Abpromise guarantee** covers the use of ab196505 in the following tested applications.

The application notes include recommended starting dilutions; optimal dilutions/concentrations should be determined by the end user.

Application	Abreviews	Notes
WB		1/500 - 1/2000. Predicted molecular weight: 13 kDa.
ICC/IF		1/50 - 1/200.
IHC-P		Use at an assay dependent concentration.

Target

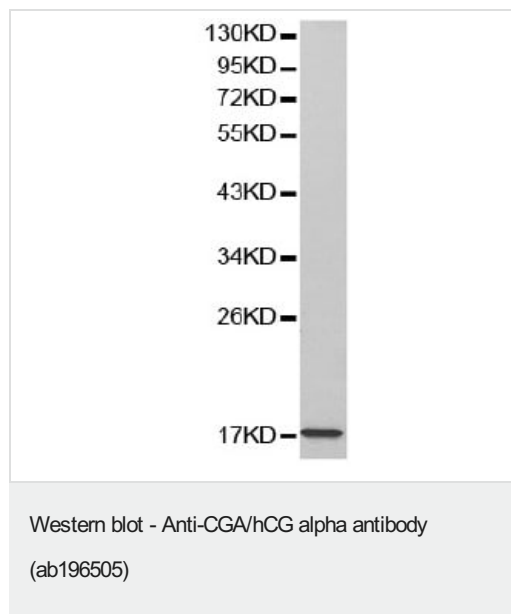
Sequence similarities

Belongs to the glycoprotein hormones subunit alpha family.

Cellular localization

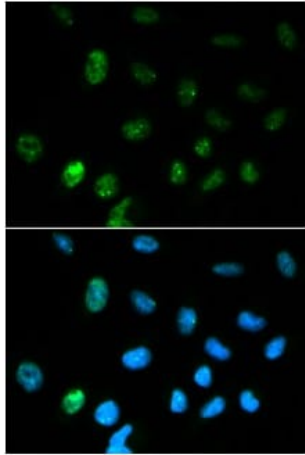
Secreted.

Images



Anti-CGA/hCG alpha antibody (ab196505) at 1/500 dilution + JAR cell lysate

Predicted band size: 13 kDa



Immunofluorescent analysis of HepG2 cells labeling hCG alpha with ab196505 at 1/50 dilution. Lower image shows DAPI for nuclear staining (blue).

Immunocytochemistry/ Immunofluorescence - Anti-CGA/hCG alpha antibody (ab196505)

Please note: All products are "FOR RESEARCH USE ONLY. NOT FOR USE IN DIAGNOSTIC PROCEDURES"

Our Abpromise to you: Quality guaranteed and expert technical support

- Replacement or refund for products not performing as stated on the datasheet
- Valid for 12 months from date of delivery
- Response to your inquiry within 24 hours
- We provide support in Chinese, English, French, German, Japanese and Spanish
- Extensive multi-media technical resources to help you
- We investigate all quality concerns to ensure our products perform to the highest standards

If the product does not perform as described on this datasheet, we will offer a refund or replacement. For full details of the Abpromise, please visit <https://www.abcam.com/abpromise> or contact our technical team.

Terms and conditions

- Guarantee only valid for products bought direct from Abcam or one of our authorized distributors