

Product datasheet

Anti-Chorionic Gonadotropin antibody ab133210

[2 Images](#)

Overview

Product name	Anti-Chorionic Gonadotropin antibody
Description	Rabbit polyclonal to Chorionic Gonadotropin
Host species	Rabbit
Tested applications	Suitable for: WB, IHC-P
Species reactivity	Reacts with: Mouse, Human
Immunogen	Synthetic peptide from C-Terminus of Human Chorionic Gonadotropin.
General notes	<p>The Life Science industry has been in the grips of a reproducibility crisis for a number of years. Abcam is leading the way in addressing this with our range of recombinant monoclonal antibodies and knockout edited cell lines for gold-standard validation. Please check that this product meets your needs before purchasing.</p> <p>If you have any questions, special requirements or concerns, please send us an inquiry and/or contact our Support team ahead of purchase. Recommended alternatives for this product can be found below, along with publications, customer reviews and Q&As</p>

Properties

Form	Liquid
Storage instructions	Shipped at 4°C. Store at +4°C short term (1-2 weeks). Store at -20°C long term.
Storage buffer	<p>pH: 7.40</p> <p>Preservative: 0.02% Sodium azide</p> <p>Constituents: 50% Glycerol (glycerin, glycerine), 48% PBS, 0.88% Sodium chloride</p> <p>The PBS is without Mg²⁺ and Ca²⁺</p>
Purity	Immunogen affinity purified
Clonality	Polyclonal
Isotype	IgG

Applications

The Abpromise guarantee Our **Abpromise guarantee** covers the use of ab133210 in the following tested applications.

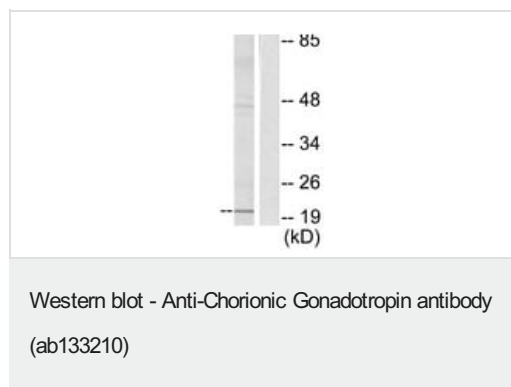
The application notes include recommended starting dilutions; optimal dilutions/concentrations should be determined by the end user.

Application	Abreviews	Notes
WB		1/500 - 1/1000. Predicted molecular weight: 18 kDa.
IHC-P		Use a concentration of 10 µg/ml. Perform heat mediated antigen retrieval with citrate buffer pH 6 before commencing with IHC staining protocol.

Target

Function	Stimulates the ovaries to synthesize the steroids that are essential for the maintenance of pregnancy.
Tissue specificity	Placenta.
Sequence similarities	Belongs to the glycoprotein hormones subunit beta family.
Developmental stage	Made by the first trimester placenta.
Cellular localization	Secreted.

Images



All lanes : Anti-Chorionic Gonadotropin antibody (ab133210) at 1/500 dilution

Lane 1 : NIH-3T3 cell extracts

Lane 2 : NIH-3T3 cell extracts with Synthesized peptide

Predicted band size: 18 kDa



ab133210, at 10 µg/ml, staining Chorionic Gonadotropin in Formalin-fixed, Paraffin-embedded Human placenta trophoblast tissue by Immunohistochemistry.

Please note: All products are "FOR RESEARCH USE ONLY. NOT FOR USE IN DIAGNOSTIC PROCEDURES"

Our Abpromise to you: Quality guaranteed and expert technical support

- Replacement or refund for products not performing as stated on the datasheet
- Valid for 12 months from date of delivery
- Response to your inquiry within 24 hours

- We provide support in Chinese, English, French, German, Japanese and Spanish
- Extensive multi-media technical resources to help you
- We investigate all quality concerns to ensure our products perform to the highest standards

If the product does not perform as described on this datasheet, we will offer a refund or replacement. For full details of the Abpromise, please visit <https://www.abcam.com/abpromise> or contact our technical team.

Terms and conditions

- Guarantee only valid for products bought direct from Abcam or one of our authorized distributors