


Product datasheet

Anti-CHRDL1 antibody ab227473

3 Images

Overview

Product name	Anti-CHRDL1 antibody
Description	Rabbit polyclonal to CHRDL1
Host species	Rabbit
Tested applications	Suitable for: WB, IHC-P
Species reactivity	Reacts with: Mouse, Rat Predicted to work with: Human, Rhesus monkey 
Immunogen	Recombinant fragment within Human CHRDL1 (internal sequence). The exact sequence is proprietary. Database link: Q9BU40
Positive control	WB: Rat brain tissue extract. IHC-P: Mouse kidney and hind brain tissue.
General notes	<p>The Life Science industry has been in the grips of a reproducibility crisis for a number of years. Abcam is leading the way in addressing this with our range of recombinant monoclonal antibodies and knockout edited cell lines for gold-standard validation. Please check that this product meets your needs before purchasing.</p> <p>If you have any questions, special requirements or concerns, please send us an inquiry and/or contact our Support team ahead of purchase. Recommended alternatives for this product can be found below, along with publications, customer reviews and Q&As</p>

Properties

Form	Liquid
Storage instructions	Shipped at 4°C. Store at +4°C short term (1-2 weeks). Upon delivery aliquot. Store at -20°C long term. Avoid freeze / thaw cycle.
Storage buffer	pH: 7.00 Preservative: 0.01% Thimerosal (merthiolate) Constituents: 79.99% PBS, 20% Glycerol (glycerin, glycerine)
Purity	Immunogen affinity purified
Clonality	Polyclonal
Isotype	IgG

Applications

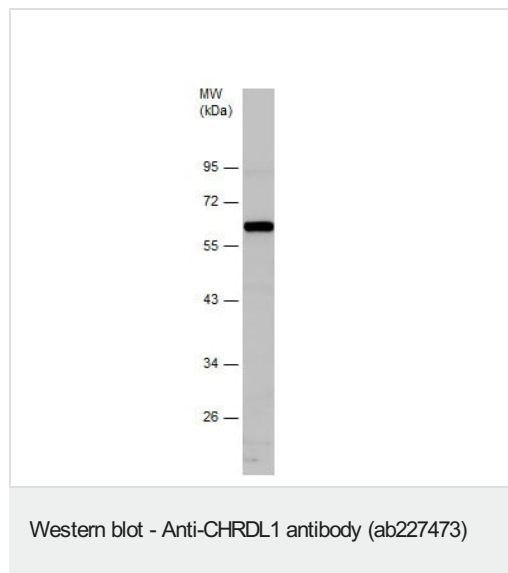
The Abpromise guarantee Our **Abpromise guarantee** covers the use of ab227473 in the following tested applications. The application notes include recommended starting dilutions; optimal dilutions/concentrations should be determined by the end user.

Application	Abreviews	Notes
WB		1/500 - 1/3000. Predicted molecular weight: 51 kDa.
IHC-P		1/100 - 1/1000.

Target

Function	Antagonizes the function of BMP4 by binding to it and preventing its interaction with receptors. Alters the fate commitment of neural stem cells from gliogenesis to neurogenesis. Contributes to neuronal differentiation of neural stem cells in the brain by preventing the adoption of a glial fate. May play a crucial role in dorsoventral axis formation. May play a role in embryonic bone formation (By similarity). May also play an important role in regulating retinal angiogenesis through modulation of BMP4 actions in endothelial cells.
Tissue specificity	Expressed in retinal pericytes.
Sequence similarities	Contains 3 VWFC domains.
Cellular localization	Secreted.

Images

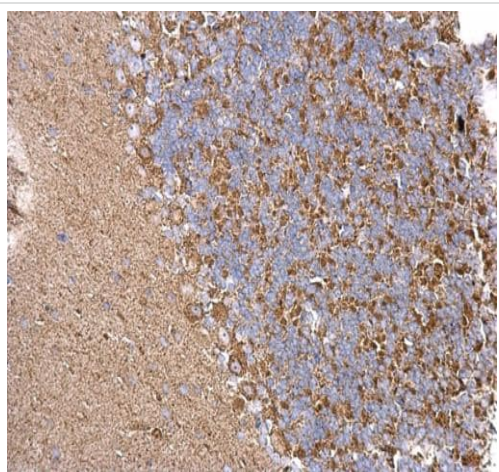


Anti-CHRDL1 antibody (ab227473) at 1/500 dilution + Rat brain tissue extract at 50 µg

Developed using the ECL technique.

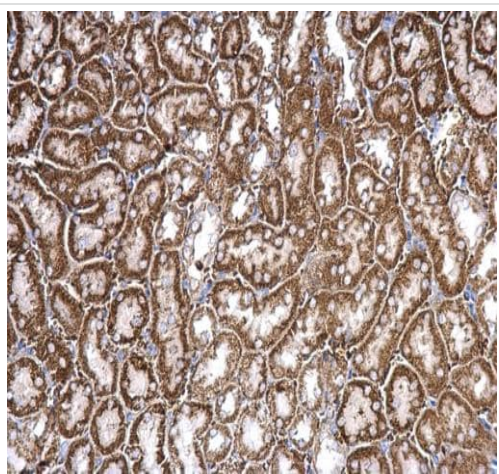
Predicted band size: 51 kDa

10% SDS-PAGE



Paraffin-embedded mouse hind brain tissue stained for CHRDL1 with ab227473 at 1/500 dilution in immunohistochemical analysis.

Immunohistochemistry (Formalin/PFA-fixed paraffin-embedded sections) - Anti-CHRDL1 antibody (ab227473)



Paraffin-embedded mouse kidney tissue stained for CHRDL1 with ab227473 at 1/500 dilution in immunohistochemical analysis.

Immunohistochemistry (Formalin/PFA-fixed paraffin-embedded sections) - Anti-CHRDL1 antibody (ab227473)

Please note: All products are "FOR RESEARCH USE ONLY. NOT FOR USE IN DIAGNOSTIC PROCEDURES"

Our Abpromise to you: Quality guaranteed and expert technical support

- Replacement or refund for products not performing as stated on the datasheet
- Valid for 12 months from date of delivery

- Response to your inquiry within 24 hours
- We provide support in Chinese, English, French, German, Japanese and Spanish
- Extensive multi-media technical resources to help you
- We investigate all quality concerns to ensure our products perform to the highest standards

If the product does not perform as described on this datasheet, we will offer a refund or replacement. For full details of the Abpromise, please visit <https://www.abcam.com/abpromise> or contact our technical team.

Terms and conditions

- Guarantee only valid for products bought direct from Abcam or one of our authorized distributors