

Product datasheet

Anti-CHRNA6 antibody [5B6G8] ab233721

6 Images

Overview

Product name	Anti-CHRNA6 antibody [5B6G8]
Description	Mouse monoclonal [5B6G8] to CHRNA6
Host species	Mouse
Tested applications	Suitable for: ICC/IF, Flow Cyt, WB, IHC-P
Species reactivity	Reacts with: Human
Immunogen	Recombinant fragment corresponding to Human CHRNA6 aa 26-239. (Expressed in E.coli). Database link: Q15825
Positive control	WB: Recombinant human CHRNA6 (aa 26-239) protein; CHRNA6 (aa 26-239)-hlgFc transfected HEK-293 cell lysate. IHC-P: Human bladder cancer tissue. ICC/IF: HeLa cells. Flow Cyt: SH-SY5Y and SK-N-SH cells.
General notes	<p>The Life Science industry has been in the grips of a reproducibility crisis for a number of years. Abcam is leading the way in addressing this with our range of recombinant monoclonal antibodies and knockout edited cell lines for gold-standard validation. Please check that this product meets your needs before purchasing.</p> <p>If you have any questions, special requirements or concerns, please send us an inquiry and/or contact our Support team ahead of purchase. Recommended alternatives for this product can be found below, along with publications, customer reviews and Q&As</p>

Properties

Form	Liquid
Storage instructions	Shipped at 4°C. Store at +4°C short term (1-2 weeks). Upon delivery aliquot. Store at -20°C long term. Avoid freeze / thaw cycle.
Storage buffer	Preservative: 0.05% Sodium azide Constituent: PBS
Purity	Protein G purified
Purification notes	Purified from tissue culture supernatant.
Clonality	Monoclonal
Clone number	5B6G8
Isotype	IgG1

Applications

The Abpromise guarantee

Our **Abpromise guarantee** covers the use of ab233721 in the following tested applications.

The application notes include recommended starting dilutions; optimal dilutions/concentrations should be determined by the end user.

Application	Abreviews	Notes
ICC/IF		1/100 - 1/500.
Flow Cyt		1/200 - 1/400.
WB		1/500 - 1/2000. Predicted molecular weight: 57 kDa.
IHC-P		1/200 - 1/1000.

Target

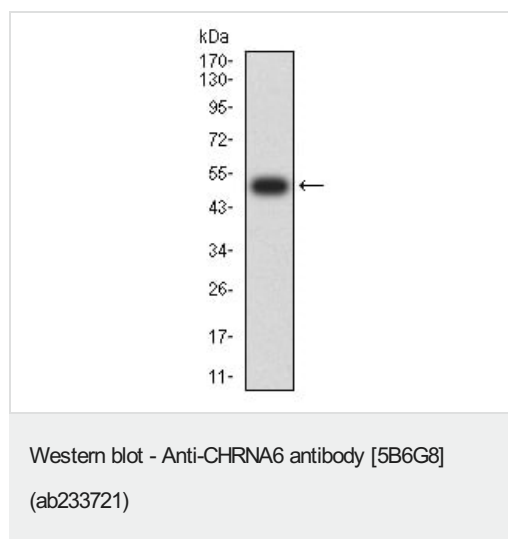
Relevance

Nicotinic acetylcholine receptors (nAChRs, AChRs) are protein complexes made up of protein subunits that coassemble to form an ion channel. This ion channel is gated through the binding of the neurotransmitter acetylcholine (ACh) to its ligand-binding site on the AChR. After binding acetylcholine, the AChR responds by an extensive change in conformation that affects all subunits and leads to opening of an ion-conducting channel across the plasma membrane. CHRNA6 (cholinergic nicotinic receptor alpha polypeptide 6) is a neuronal acetylcholine receptor protein.

Cellular localization

Cell junction, synapse, postsynaptic cell membrane; Multi-pass membrane protein. Cell membrane; Multi-pass membrane protein.

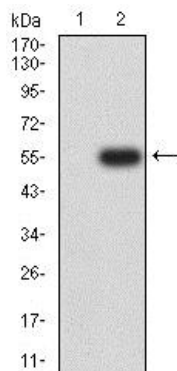
Images



Anti-CHRNA6 antibody [5B6G8] (ab233721) + Recombinant human CHRNA6 (aa 26-239) protein

Predicted band size: 57 kDa

Expected MW is 51.2 kDa.



Western blot - Anti-CHRNA6 antibody [5B6G8] (ab233721)

All lanes : Anti-CHRNA6 antibody [5B6G8] (ab233721) at 1/500 dilution

Lane 1 : HEK-293 (human epithelial cell line from embryonic kidney) cell lysate

Lane 2 : CHRNA6 (aa 26-239)-hlgGFc transfected HEK HEK-293 cell lysate

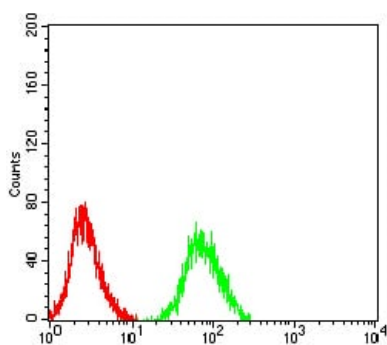
Predicted band size: 57 kDa



Immunocytochemistry/ Immunofluorescence - Anti-CHRNA6 antibody [5B6G8] (ab233721)

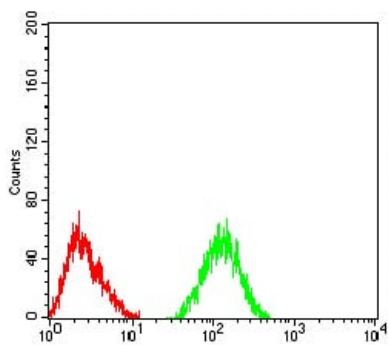
HeLa (human epithelial cell line from cervix adenocarcinoma) cells stained for CHRNA6 (green) using ab233721 at 1/100 dilution in ICC/IF.

Blue: DRAQ5 fluorescent DNA dye. Red: Actin filaments have been labeled with Alexa Fluor-555 phalloidin.



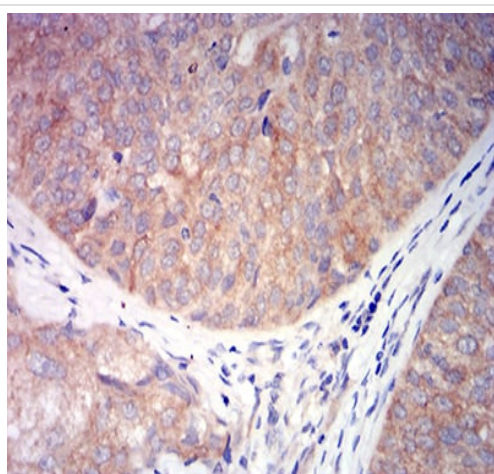
Flow Cytometry - Anti-CHRNA6 antibody [5B6G8] (ab233721)

Flow cytometric analysis of SH-SY5Y (human neuroblastoma cell line from bone marrow) cell line labeling CHRNA6 with ab233721 at 1/200 dilution (green) compared with a negative control (red).



Immunocytochemistry/ Immunofluorescence - Anti-
CHRNA6 antibody [5B6G8] (ab233721)

Flow cytometric analysis of SK-N-SH (human neuroblastoma cell line) cell line labeling CHRNA6 with ab233721 at 1/200 dilution (green) compared with a negative control (red).



Immunohistochemistry (Formalin/PFA-fixed paraffin-
embedded sections) - Anti-CHRNA6 antibody
[5B6G8] (ab233721)

Paraffin-embedded human bladder cancer tissue stained for CHRNA6 using ab233721 at 1/200 dilution in immunohistochemical analysis. DAB staining.

Please note: All products are "FOR RESEARCH USE ONLY. NOT FOR USE IN DIAGNOSTIC PROCEDURES"

Our Abpromise to you: Quality guaranteed and expert technical support

- Replacement or refund for products not performing as stated on the datasheet
- Valid for 12 months from date of delivery
- Response to your inquiry within 24 hours
- We provide support in Chinese, English, French, German, Japanese and Spanish
- Extensive multi-media technical resources to help you
- We investigate all quality concerns to ensure our products perform to the highest standards

If the product does not perform as described on this datasheet, we will offer a refund or replacement. For full details of the Abpromise, please visit <https://www.abcam.com/abpromise> or contact our technical team.

Terms and conditions

- Guarantee only valid for products bought direct from Abcam or one of our authorized distributors