

Anti-Chromogranin A antibody [SP12] ab16693

RabMAb

[1 References](#) [1 Image](#)

Overview

Product name	Anti-Chromogranin A antibody [SP12]
Description	Rabbit monoclonal [SP12] to Chromogranin A
Host species	Rabbit
Tested applications	Suitable for: IHC-P
Species reactivity	Reacts with: Human
Immunogen	Recombinant fragment within Human Chromogranin A. The exact sequence is proprietary.
Positive control	Human pancreas
General notes	<p>This product is FOR RESEARCH USE ONLY. For commercial use, please contact partnerships@abcam.com.</p> <p>The Life Science industry has been in the grips of a reproducibility crisis for a number of years. Abcam is leading the way in addressing this with our range of recombinant monoclonal antibodies and knockout edited cell lines for gold-standard validation. Please check that this product meets your needs before purchasing.</p> <p>If you have any questions, special requirements or concerns, please send us an inquiry and/or contact our Support team ahead of purchase. Recommended alternatives for this product can be found below, along with publications, customer reviews and Q&As</p>

Properties

Form	Liquid
Storage instructions	Shipped at 4°C. Upon delivery aliquot and store at -20°C. Avoid freeze / thaw cycles.
Storage buffer	<p>pH: 7.50</p> <p>Preservative: 0.1% Sodium azide</p> <p>Constituents: Tissue culture supernatant, Tris buffered saline, 1% BSA</p>
Purity	Tissue culture supernatant
Clonality	Monoclonal
Clone number	SP12
Isotype	IgG

Applications

The Abpromise guarantee

Our **Abpromise guarantee** covers the use of ab16693 in the following tested applications.

The application notes include recommended starting dilutions; optimal dilutions/concentrations should be determined by the end user.

Application	Abreviews	Notes
IHC-P		

Application notes

IHC-P: 1/100 for 10 min at room temperature. Perform heat mediated antigen retrieval by boiling tissue sections in 10mM citrate buffer pH 6.0 for 10 min and then cool at room temperature for 20 min before commencing with IHC staining protocol.

Not yet tested in other applications.

Optimal dilutions/concentrations should be determined by the end user.

Target

Function

Pancreastatin strongly inhibits glucose induced insulin release from the pancreas.

Sequence similarities

Belongs to the chromogranin/secretogranin protein family.

Post-translational modifications

Sulfated on tyrosine residues and/or contains sulfated glycans.
O-glycosylated with core 1 or possibly core 8 glycans.

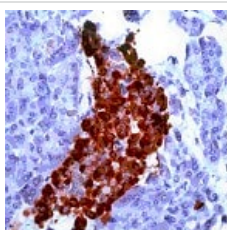
Cellular localization

Secreted. Neuroendocrine and endocrine secretory granules.

Form

According to the Swiss-Prot database, this protein has many different forms which correspond to various molecular weights; thus the possible variation from the predicted molecular weight of 51kDa.

Images



Paraffin embedded formalin fixed human pancreas stained with anti Chromogranin A antibody ab16693 at 1/100 dilution.

Immunohistochemistry (Formalin/PFA-fixed paraffin-embedded sections) - Anti-Chromogranin A antibody [SP12] (ab16693)

Please note: All products are "FOR RESEARCH USE ONLY. NOT FOR USE IN DIAGNOSTIC PROCEDURES"

Our Abpromise to you: Quality guaranteed and expert technical support

- Replacement or refund for products not performing as stated on the datasheet

- Valid for 12 months from date of delivery
- Response to your inquiry within 24 hours
- We provide support in Chinese, English, French, German, Japanese and Spanish
- Extensive multi-media technical resources to help you
- We investigate all quality concerns to ensure our products perform to the highest standards

If the product does not perform as described on this datasheet, we will offer a refund or replacement. For full details of the Abpromise, please visit <https://www.abcam.com/abpromise> or contact our technical team.

Terms and conditions

- Guarantee only valid for products bought direct from Abcam or one of our authorized distributors