

Product datasheet

Anti-Chromogranin C/SGII antibody [SGII 6B1/3] ab20245

★★★★★ [1 Abreviews](#) [7 References](#) [2 Images](#)

Overview

Product name	Anti-Chromogranin C/SGII antibody [SGII 6B1/3]
Description	Mouse monoclonal [SGII 6B1/3] to Chromogranin C/SGII
Host species	Mouse
Specificity	SGII6B1/3 has potential uses for chromatogranin diagnostics.
Tested applications	Suitable for: ICC/IF, IHC-P
Species reactivity	Reacts with: Rat
Immunogen	Synthetic peptide corresponding to Rat Chromogranin C/SGII (C terminal). Sequence: KEENSRENPF

 [Run BLAST with](#)

 [Run BLAST with](#)

General notes

The Life Science industry has been in the grips of a reproducibility crisis for a number of years. Abcam is leading the way in addressing this with our range of recombinant monoclonal antibodies and knockout edited cell lines for gold-standard validation. Please check that this product meets your needs before purchasing.

If you have any questions, special requirements or concerns, please send us an inquiry and/or contact our Support team ahead of purchase. Recommended alternatives for this product can be found below, along with publications, customer reviews and Q&As

Properties

Form	Liquid
Storage instructions	Shipped at 4°C. Store at +4°C short term (1-2 weeks). Upon delivery aliquot. Store at -20°C or -80°C. Avoid freeze / thaw cycle.
Storage buffer	Preservative: 0.02% Sodium azide Constituent: 99.98% PBS
Purity	Protein A/G purified
Clonality	Monoclonal
Clone number	SGII 6B1/3
Myeloma	Sp2

Isotype

IgG2b

Applications

The Abpromise guarantee

Our **Abpromise guarantee** covers the use of ab20245 in the following tested applications.

The application notes include recommended starting dilutions; optimal dilutions/concentrations should be determined by the end user.

Application	Abreviews	Notes
ICC/IF	★★★★★ (1)	Use at an assay dependent concentration.
IHC-P		Use a concentration of 1 µg/ml. Perform heat mediated antigen retrieval with citrate buffer pH 6 before commencing with IHC staining protocol.

Target

Function

Secretogranin-2 is a neuroendocrine secretory granule protein, which is the precursor for biologically active peptides.

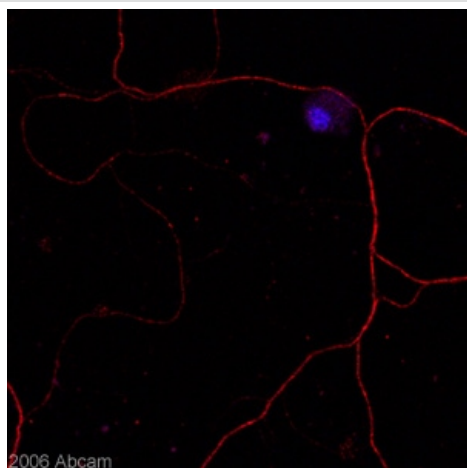
Sequence similarities

Belongs to the chromogranin/secretogranin protein family.

Cellular localization

Secreted. Neuroendocrine and endocrine secretory granules.

Images



Confocal image of immunofluorescence staining with Mouse monoclonal [SGII 6B1/3] to Chromogranin C/SGII;(ab20245; 2µg/ml for 1h at room temperature) in red and nuclear counterstain in blue on Rat Cell (Hippocampal neuron culture). Cells were fixed with paraformaldehyde; BSA (5%) was used as a blocking agent (40 minutes at room temperature). Secondary antibody was Goat anti-mouse IgG2b Alexa Fluor 568 Conjugation (1/600).

Immunocytochemistry/ Immunofluorescence - Anti-Chromogranin C/SGII antibody [SGII 6B1/3] (ab20245)

This image is courtesy of Randal Moldrich, CNRS UMR7637, ESPCI, France



Immunohistochemistry (Formalin/PFA-fixed paraffin-embedded sections) - Anti-Chromogranin C/SGII antibody [SGII 6B1/3] (ab20245)

IHC image of ab20245 staining in normal rat brain formalin fixed paraffin embedded tissue section, performed on a Leica Bond™ system using the standard protocol F. The section was pre-treated using heat mediated antigen retrieval with sodium citrate buffer (pH6, epitope retrieval solution 1) for 20 mins. The section was then incubated with ab20245, 1 µg/ml, for 15 mins at room temperature and detected using an HRP conjugated compact polymer system. DAB was used as the chromogen. The section was then counterstained with haematoxylin and mounted with DPX.

For other IHC staining systems (automated and non-automated) customers should optimize variable parameters such as antigen retrieval conditions, primary antibody concentration and antibody incubation times.

Please note: All products are "FOR RESEARCH USE ONLY. NOT FOR USE IN DIAGNOSTIC PROCEDURES"

Our Abpromise to you: Quality guaranteed and expert technical support

- Replacement or refund for products not performing as stated on the datasheet
- Valid for 12 months from date of delivery
- Response to your inquiry within 24 hours
- We provide support in Chinese, English, French, German, Japanese and Spanish
- Extensive multi-media technical resources to help you
- We investigate all quality concerns to ensure our products perform to the highest standards

If the product does not perform as described on this datasheet, we will offer a refund or replacement. For full details of the Abpromise, please visit <https://www.abcam.com/abpromise> or contact our technical team.

Terms and conditions

- Guarantee only valid for products bought direct from Abcam or one of our authorized distributors