

## Product datasheet

# Anti-ChT1 antibody ab154493

[2 Images](#)

### Overview

---

<b>Product name</b>	Anti-ChT1 antibody
<b>Description</b>	Rabbit polyclonal to ChT1
<b>Host species</b>	Rabbit
<b>Tested applications</b>	<b>Suitable for:</b> WB, IHC-P
<b>Species reactivity</b>	<b>Reacts with:</b> Human
<b>Immunogen</b>	A recombinant fragment corresponding to a region within amino acids 1-212 of Human ChT1 (Uniprot ID Q86XK7).
<b>Positive control</b>	NT2D1 cell lysate; Human breast carcinoma.
<b>General notes</b>	<p>The Life Science industry has been in the grips of a reproducibility crisis for a number of years. Abcam is leading the way in addressing this with our range of recombinant monoclonal antibodies and knockout edited cell lines for gold-standard validation. Please check that this product meets your needs before purchasing.</p> <p>If you have any questions, special requirements or concerns, please send us an inquiry and/or contact our Support team ahead of purchase. Recommended alternatives for this product can be found below, along with publications, customer reviews and Q&amp;As</p>

### Properties

---

<b>Form</b>	Liquid
<b>Storage instructions</b>	Shipped at 4°C. Upon delivery aliquot. Store at -20°C or -80°C. Avoid freeze / thaw cycle.
<b>Storage buffer</b>	pH: 7.00 Preservative: 0.01% Thimerosal (merthiolate) Constituents: 1.21% Tris, 0.75% Glycine, 20% Glycerol (glycerin, glycerine)
<b>Purity</b>	Immunogen affinity purified
<b>Clonality</b>	Polyclonal
<b>Isotype</b>	IgG

### Applications

---

**The Abpromise guarantee** Our **Abpromise guarantee** covers the use of ab154493 in the following tested applications.

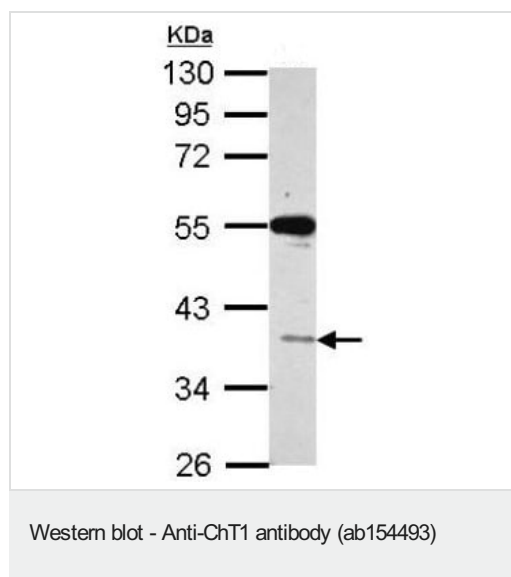
The application notes include recommended starting dilutions; optimal dilutions/concentrations should be determined by the end user.

Application	Abreviews	Notes
WB		1/500 - 1/3000. Predicted molecular weight: 42 kDa.
IHC-P		1/100 - 1/1000.

## Target

<b>Tissue specificity</b>	Detected only in stomach mucosa and testis, and to a much lesser level in pancreas (at protein level). Detected in gastric cancers (31%), esophageal carcinomas (50%) and ovarian cancers (23%).
<b>Sequence similarities</b>	Contains 1 Ig-like C2-type (immunoglobulin-like) domain. Contains 1 Ig-like V-type (immunoglobulin-like) domain.
<b>Post-translational modifications</b>	Highly N-glycosylated. Appears not to contain significant amounts of O-linked carbohydrates or sialic acid in its sugar moieties.
<b>Cellular localization</b>	Membrane.

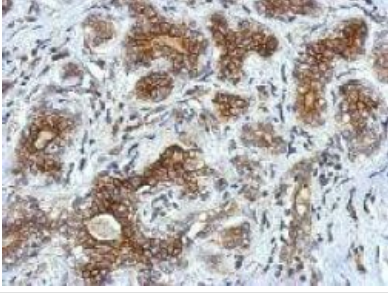
## Images



Anti-ChT1 antibody (ab154493) at 1/1000 dilution + NT2D1 whole cell lysate at 30 µg

**Predicted band size:** 42 kDa

10% SDS PAGE



Immunohistochemical analysis of paraffin-embedded Human breast carcinoma, labeling ChT1 using ab154493 at 1/500 dilution.

Immunohistochemistry (Formalin/PFA-fixed paraffin-embedded sections) - Anti-ChT1 antibody (ab154493)

**Please note:** All products are "FOR RESEARCH USE ONLY. NOT FOR USE IN DIAGNOSTIC PROCEDURES"

### **Our Abpromise to you: Quality guaranteed and expert technical support**

---

- Replacement or refund for products not performing as stated on the datasheet
- Valid for 12 months from date of delivery
- Response to your inquiry within 24 hours
- We provide support in Chinese, English, French, German, Japanese and Spanish
- Extensive multi-media technical resources to help you
- We investigate all quality concerns to ensure our products perform to the highest standards

If the product does not perform as described on this datasheet, we will offer a refund or replacement. For full details of the Abpromise, please visit <https://www.abcam.com/abpromise> or contact our technical team.

### **Terms and conditions**

---

- Guarantee only valid for products bought direct from Abcam or one of our authorized distributors