

Anti-Chymotrypsin antibody [EPR13859] ab187164

Recombinant RabMAb

3 Images

Overview

Product name	Anti-Chymotrypsin antibody [EPR13859]
Description	Rabbit monoclonal [EPR13859] to Chymotrypsin
Host species	Rabbit
Tested applications	Suitable for: Flow Cyt (Intra), IHC-P
Species reactivity	Reacts with: Human
Immunogen	Synthetic peptide. This information is proprietary to Abcam and/or its suppliers.
Positive control	Human pancreas tissue; SH-SY5Y cells.
General notes	<p>This product is a recombinant monoclonal antibody, which offers several advantages including:</p> <ul style="list-style-type: none"> - High batch-to-batch consistency and reproducibility - Improved sensitivity and specificity - Long-term security of supply - Animal-free production <p>For more information see here.</p> <p>Our RabMAb® technology is a patented hybridoma-based technology for making rabbit monoclonal antibodies. For details on our patents, please refer to RabMAb® patents.</p>

Properties

Form	Liquid
Storage instructions	Shipped at 4°C. Store at +4°C short term (1-2 weeks). Upon delivery aliquot. Store at -20°C long term. Avoid freeze / thaw cycle.
Storage buffer	<p>pH: 7.2</p> <p>Preservative: 0.01% Sodium azide</p> <p>Constituents: 59% PBS, 40% Glycerol (glycerin, glycerine), 0.05% BSA</p>
Purity	Protein A purified
Clonality	Monoclonal
Clone number	EPR13859
Isotype	IgG

Applications

The Abpromise guarantee

Our **Abpromise guarantee** covers the use of ab187164 in the following tested applications.

The application notes include recommended starting dilutions; optimal dilutions/concentrations should be determined by the end user.

Application	Abreviews	Notes
Flow Cyt (Intra)		1/270. ab172730 - Rabbit monoclonal IgG, is suitable for use as an isotype control with this antibody.
IHC-P		1/2000 - 1/4000. Perform heat mediated antigen retrieval with Tris/EDTA buffer pH 9.0 before commencing with IHC staining protocol.

Target

Function

Has chymotrypsin-type protease activity and hypocalcemic activity.

Tissue specificity

Pancreas.

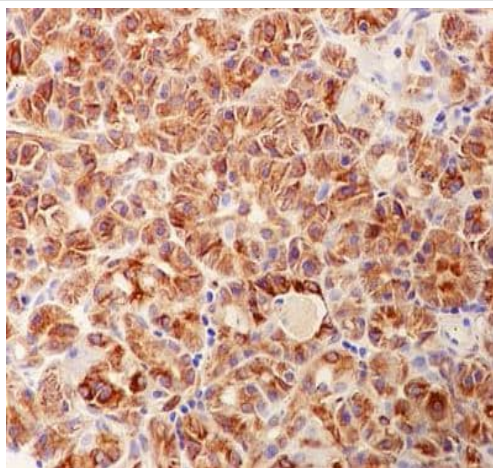
Involvement in disease

Variations in CTSC influence susceptibility to chronic pancreatitis [MIM:167800]. Chronic pancreatitis is a persistent inflammatory disorder characterized by permanent destruction of the pancreatic parenchyma.

Sequence similarities

Belongs to the peptidase S1 family. Elastase subfamily.
Contains 1 peptidase S1 domain.

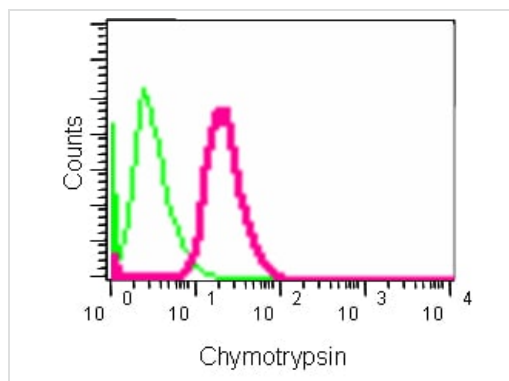
Images



Immunohistochemistry (Formalin/PFA-fixed paraffin-embedded sections) - Anti-Chymotrypsin antibody [EPR13859] (ab187164)

Immunohistochemical analysis of paraffin-embedded Human pancreas tissue labeling Chymotrypsin with ab187164 at 1/2000 dilution, followed by prediluted HRP Polymer for Rabbit IgG. Counter stained with Hematoxylin.





Perform heat mediated antigen retrieval with EDTA buffer pH 9 before commencing with IHC staining protocol.



Intracellular flow cytometric analysis of 2% paraformaldehyde-fixed SH-SY5Y cells labeling Chymotrypsin with ab187164 at 1/270 dilution (red), compared to a Rabbit monoclonal IgG isotype control (green), followed by Goat anti rabbit IgG (FITC) secondary antibody at 1/150 dilution.

Flow Cytometry (Intracellular) - Anti-Chymotrypsin antibody [EPR13859] (ab187164)

Why choose a recombinant antibody?

 <p>Research with confidence Consistent and reproducible results</p>	 <p>Long-term and scalable supply Recombinant technology</p>
 <p>Success from the first experiment Confirmed specificity</p>	 <p>Ethical standards compliant Animal-free production</p>

Anti-Chymotrypsin antibody [EPR13859] (ab187164)

Please note: All products are "FOR RESEARCH USE ONLY. NOT FOR USE IN DIAGNOSTIC PROCEDURES"

Our Abpromise to you: Quality guaranteed and expert technical support

- Replacement or refund for products not performing as stated on the datasheet
- Valid for 12 months from date of delivery
- Response to your inquiry within 24 hours
- We provide support in Chinese, English, French, German, Japanese and Spanish
- Extensive multi-media technical resources to help you
- We investigate all quality concerns to ensure our products perform to the highest standards

If the product does not perform as described on this datasheet, we will offer a refund or replacement. For full details of the Abpromise, please visit <https://www.abcam.com/abpromise> or contact our technical team.

Terms and conditions

- Guarantee only valid for products bought direct from Abcam or one of our authorized distributors