


## Product datasheet

### Anti-CIKS/ACT1 antibody ab137395

3 Images

#### Overview

<b>Product name</b>	Anti-CIKS/ACT1 antibody
<b>Description</b>	Rabbit polyclonal to CIKS/ACT1
<b>Host species</b>	Rabbit
<b>Tested applications</b>	<b>Suitable for:</b> WB, ICC/IF, IHC-P
<b>Species reactivity</b>	<b>Reacts with:</b> Human <b>Predicted to work with:</b> Mouse, Rat, Cow 
<b>Immunogen</b>	Recombinant fragment corresponding to Human CIKS/ACT1 aa 350-600. Database link: <a href="#">O43734</a>
<b>Positive control</b>	HepG2 whole cell lysate ( <a href="#">ab7900</a> ), HeLa cells, Colon ca tissue
<b>General notes</b>	<p>The Life Science industry has been in the grips of a reproducibility crisis for a number of years. Abcam is leading the way in addressing this with our range of recombinant monoclonal antibodies and knockout edited cell lines for gold-standard validation. Please check that this product meets your needs before purchasing.</p> <p>If you have any questions, special requirements or concerns, please send us an inquiry and/or contact our Support team ahead of purchase. Recommended alternatives for this product can be found below, along with publications, customer reviews and Q&amp;As</p>

#### Properties

<b>Form</b>	Liquid
<b>Storage instructions</b>	Shipped at 4°C. Upon delivery aliquot. Store at -20°C or -80°C. Avoid freeze / thaw cycle.
<b>Storage buffer</b>	pH: 7.00 Preservative: 0.01% Thimerosal (merthiolate) Constituents: 1.21% Tris, 0.75% Glycine, 20% Glycerol (glycerin, glycerine)
<b>Purity</b>	Immunogen affinity purified
<b>Clonality</b>	Polyclonal
<b>Isotype</b>	IgG

#### Applications

## The Abpromise guarantee

Our **Abpromise guarantee** covers the use of ab137395 in the following tested applications.

The application notes include recommended starting dilutions; optimal dilutions/concentrations should be determined by the end user.

Application	Abreviews	Notes
WB		1/500 - 1/3000. Predicted molecular weight: 65 kDa.
ICC/IF		1/100 - 1/1000.
IHC-P		1/100 - 1/1000. Perform heat mediated antigen retrieval with citrate buffer pH 6 before commencing with IHC staining protocol.

## Target

### Function

Could be involved in the activation of both NF-kappa-B via a NF-kappa-B inhibitor kinase (IKK)-dependent mechanism and stress-activated protein kinase (SAPK)/JNK.

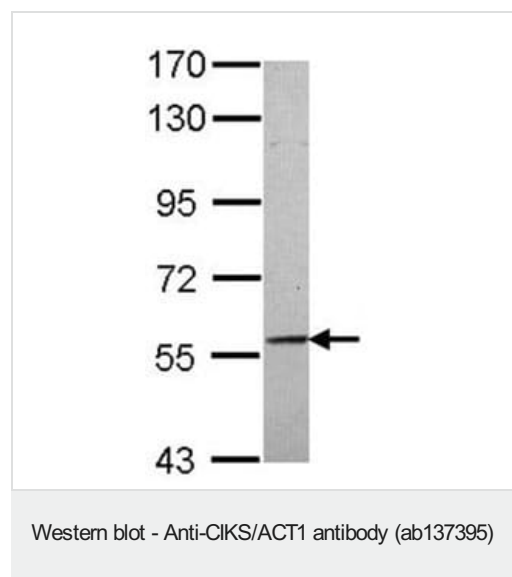
### Tissue specificity

Widely expressed.

### Sequence similarities

Contains 1 SEFIR domain.

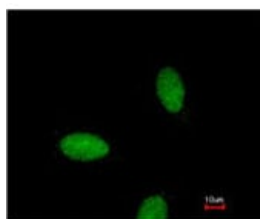
## Images



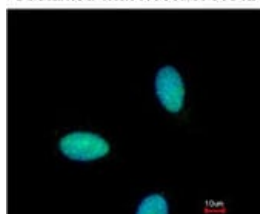
Anti-CKS/ACT1 antibody (ab137395) at 1/1000 dilution + Hep G2 whole cell lysate at 30 µg

**Predicted band size:** 65 kDa

7.5% SDS PAGE

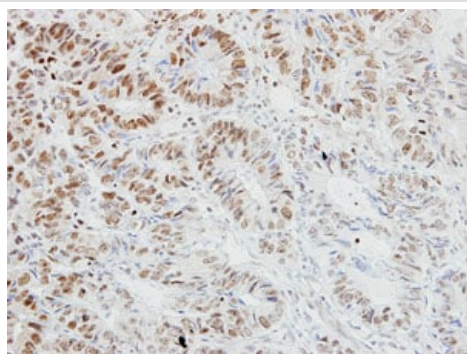


Costained with Hoechst 33342



Immunofluorescence analysis of paraformaldehyde-fixed HeLa cells labelled with ab137395 at 1/200 dilution.

Immunocytochemistry/ Immunofluorescence - Anti-ClKS/ACT1 antibody (ab137395)



Immunohistochemical analysis of paraffin embedded Colon ca tissue labelled with ab137395 at 1/250 dilution.

Immunohistochemistry (Formalin/PFA-fixed paraffin-embedded sections) - Anti-ClKS/ACT1 antibody (ab137395)

**Please note:** All products are "FOR RESEARCH USE ONLY. NOT FOR USE IN DIAGNOSTIC PROCEDURES"

### Our Abpromise to you: Quality guaranteed and expert technical support

- Replacement or refund for products not performing as stated on the datasheet
- Valid for 12 months from date of delivery

- Response to your inquiry within 24 hours
- We provide support in Chinese, English, French, German, Japanese and Spanish
- Extensive multi-media technical resources to help you
- We investigate all quality concerns to ensure our products perform to the highest standards

If the product does not perform as described on this datasheet, we will offer a refund or replacement. For full details of the Abpromise, please visit <https://www.abcam.com/abpromise> or contact our technical team.

#### **Terms and conditions**

---

- Guarantee only valid for products bought direct from Abcam or one of our authorized distributors