

# Anti-Citrulline antibody ab100932

★★★★★ [3 Abreviews](#) [13 References](#) [3 Images](#)

### Overview

<b>Product name</b>	Anti-Citrulline antibody
<b>Description</b>	Rabbit polyclonal to Citrulline
<b>Host species</b>	Rabbit
<b>Specificity</b>	ab100932 reacts specifically with intrapeptidic citrulline independently of the amino acid sequence. It does not react with free citrulline, ornithine or arginine. Citrulline is an un-natural amino-acid and its expression is very low. Factors limiting the detection are the amount of endogenous citrulline within a protein and the accessibility of the antibody to these sites.
<b>Tested applications</b>	<b>Suitable for:</b> ELISA, ICC <b>Unsuitable for:</b> WB
<b>Species reactivity</b>	<b>Reacts with:</b> Species independent
<b>Immunogen</b>	Chemical/ Small Molecule corresponding to Citrulline conjugated to keyhole limpet haemocyanin (Glutaraldehyde).
<b>Positive control</b>	Hypercitrullinated Histones induced in HL60 cells by DMSO +calcium +calcium ionophore A23187
<b>General notes</b>	<p>The Life Science industry has been in the grips of a reproducibility crisis for a number of years. Abcam is leading the way in addressing this with our range of recombinant monoclonal antibodies and knockout edited cell lines for gold-standard validation. Please check that this product meets your needs before purchasing.</p> <p>If you have any questions, special requirements or concerns, please send us an inquiry and/or contact our Support team ahead of purchase. Recommended alternatives for this product can be found below, along with publications, customer reviews and Q&amp;As</p>

### Properties

<b>Form</b>	Liquid
<b>Storage instructions</b>	Shipped at 4°C. Store at +4°C short term (1-2 weeks). Upon delivery aliquot. Store at -20°C long term.
<b>Storage buffer</b>	Constituent: Whole serum
<b>Purity</b>	Whole antiserum
<b>Clonality</b>	Polyclonal
<b>Isotype</b>	IgG

Applications

**The Abpromise guarantee** Our **Abpromise guarantee** covers the use of ab100932 in the following tested applications. The application notes include recommended starting dilutions; optimal dilutions/concentrations should be determined by the end user.

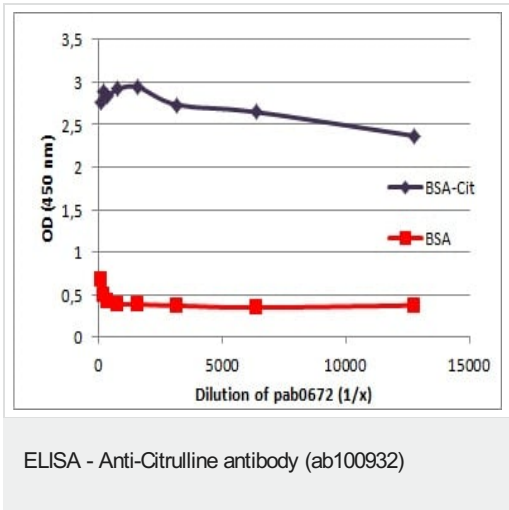
Application	Abreviews	Notes
ELISA		Use at an assay dependent concentration.
ICC	★★★★★ (1)	Use at an assay dependent concentration.

**Application notes** Is unsuitable for WB.

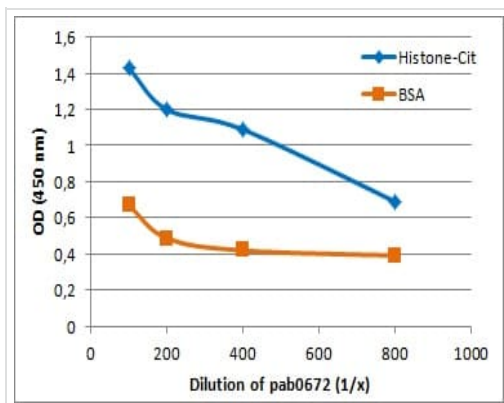
Target

**Relevance** The amino acid Citrulline is required to detoxify the liver from ammonia, which is a waste product of the body from oxidation. Citrulline promotes energy and assists with the immune system. This unusual amino acid is formed in the urea cycle by the addition of carbon dioxide and ammonia to ornithine. It is then combined with aspartic acid to form arginosuccinic acid, which later is metabolized into the amino acid arginine.

Images

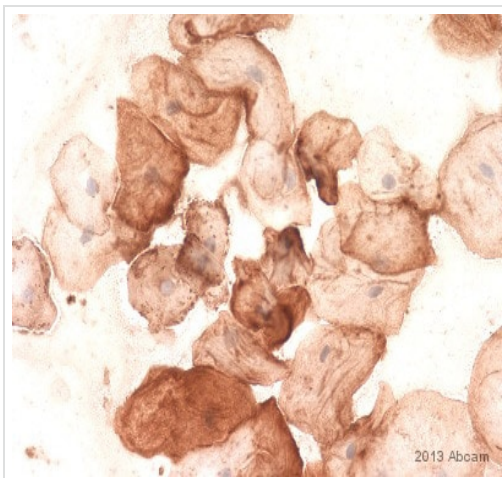


ELISA data showing the high immuno-reactivity of ab100932 against citrulline due to the high amounts of citrulline conjugated to BSA.



ELISA - Anti-Citrulline antibody (ab100932)

ELISA data demonstrating the specificity of ab100932 to citrulline naturally present in histones (endogenous citrulline).



Immunocytochemistry - Anti-Citrulline antibody (ab100932)

This image is courtesy of an anonymous Abreview

Immunocytochemical analysis of Human buccal mucosal cells, staining Citrulline with ab100932.

Cells were fixed with acetone followed by 2% glutaraldehyde, permeabilized with 0.1% Triton X-100 and blocked with 3% BSA for 20 minutes at 22°C. Samples were incubated with primary antibody (1/200 in PBS) for 15 hours at 4°C. An undiluted biotinylated anti-rabbit polyclonal IgG was used as the secondary antibody.

**Please note:** All products are "FOR RESEARCH USE ONLY. NOT FOR USE IN DIAGNOSTIC PROCEDURES"

### Our Abpromise to you: Quality guaranteed and expert technical support

- Replacement or refund for products not performing as stated on the datasheet
- Valid for 12 months from date of delivery
- Response to your inquiry within 24 hours

- We provide support in Chinese, English, French, German, Japanese and Spanish
- Extensive multi-media technical resources to help you
- We investigate all quality concerns to ensure our products perform to the highest standards

If the product does not perform as described on this datasheet, we will offer a refund or replacement. For full details of the Abpromise, please visit <https://www.abcam.com/abpromise> or contact our technical team.

#### **Terms and conditions**

---

- Guarantee only valid for products bought direct from Abcam or one of our authorized distributors