


Anti-CK1 epsilon antibody ab70110

[2 References](#) [3 Images](#)

Overview

| | |
|----------------------------|---|
| Product name | Anti-CK1 epsilon antibody |
| Description | Rabbit polyclonal to CK1 epsilon |
| Host species | Rabbit |
| Tested applications | Suitable for: WB, IHC-P, ICC/IF |
| Species reactivity | Reacts with: Human Predicted to work with: Mouse  |
| Immunogen | Synthetic peptide derived from an internal sequence of human CK1 epsilon |
| Positive control | LOVO cell extracts, HeLa cells and human placenta tissue. |
| General notes | <p>The Life Science industry has been in the grips of a reproducibility crisis for a number of years. Abcam is leading the way in addressing this with our range of recombinant monoclonal antibodies and knockout edited cell lines for gold-standard validation. Please check that this product meets your needs before purchasing.</p> <p>If you have any questions, special requirements or concerns, please send us an inquiry and/or contact our Support team ahead of purchase. Recommended alternatives for this product can be found below, along with publications, customer reviews and Q&As</p> |

Properties

| | |
|-----------------------------|--|
| Form | Liquid |
| Storage instructions | Shipped at 4°C. Store at -20°C. Stable for 12 months at -20°C. |
| Storage buffer | <p>pH: 7.40</p> <p>Preservative: 0.02% Sodium azide</p> <p>Constituents: 50% Glycerol, 0.87% Sodium chloride, PBS</p> <p>Without Mg²⁺ and Ca²⁺</p> |
| Purity | Immunogen affinity purified |
| Purification notes | ab70110 was affinity-purified from rabbit antiserum by affinity-chromatography using epitope-specific immunogen. |
| Clonality | Polyclonal |
| Isotype | IgG |

Applications

The Abpromise guarantee

Our **Abpromise guarantee** covers the use of ab70110 in the following tested applications.

The application notes include recommended starting dilutions; optimal dilutions/concentrations should be determined by the end user.

| Application | Abreviews | Notes |
|-------------|-----------|--|
| WB | | 1/500 - 1/1000. Detects a band of approximately 48 kDa (predicted molecular weight: 48 kDa). |
| IHC-P | | 1/50 - 1/100. |
| ICC/IF | | 1/500 - 1/1000. |

Target

Function

Casein kinases are operationally defined by their preferential utilization of acidic proteins such as caseins as substrates. Can phosphorylate a large number of proteins. Participates in Wnt signaling. Phosphorylates DVL1. Central component of the circadian clock. May act as a negative regulator of circadian rhythmicity by phosphorylating PER1 and PER2. Retains PER1 in the cytoplasm. Inhibits cytokine-induced granulocytic differentiation.

Tissue specificity

Expressed in all tissues examined, including brain, heart, lung, liver, pancreas, kidney, placenta and skeletal muscle. Expressed in monocytes and lymphocytes but not in granulocytes.

Sequence similarities

Belongs to the protein kinase superfamily. CK1 Ser/Thr protein kinase family. Casein kinase I subfamily.
Contains 1 protein kinase domain.

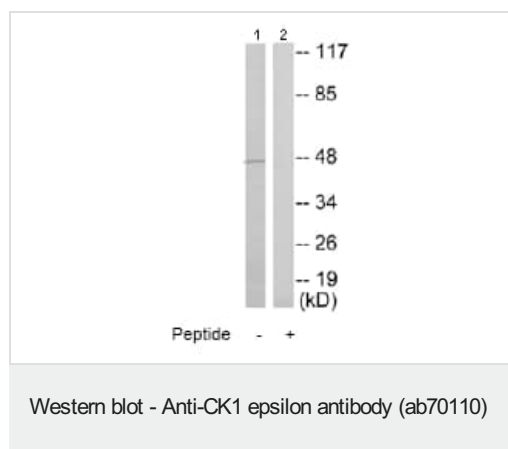
Post-translational modifications

Autophosphorylated.

Cellular localization

Cytoplasm. Nucleus.

Images



All lanes : Anti-CK1 epsilon antibody (ab70110) at 1/500 dilution

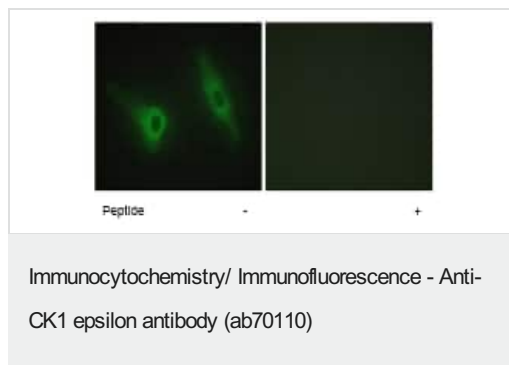
Lane 1 : LOVO cell extracts

Lane 2 : LOVO cell extracts with immunising peptide at 10 µg

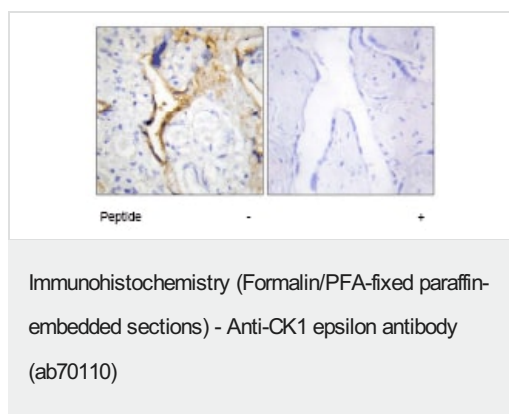
Lysates/proteins at 30 µg per lane.

Predicted band size: 48 kDa

Observed band size: 48 kDa



ab70110 at 1/500 dilution staining CK1 epsilon in HeLa cells by Immunofluorescence, in the absence or presence of the immunising peptide.



ab70110 at 1/50 dilution staining CK1 epsilon in human placenta by Immunohistochemistry, Paraffin-embedded tissue, in the absence or presence of the immunising peptide

Please note: All products are "FOR RESEARCH USE ONLY. NOT FOR USE IN DIAGNOSTIC PROCEDURES"

Our Abpromise to you: Quality guaranteed and expert technical support

- Replacement or refund for products not performing as stated on the datasheet
- Valid for 12 months from date of delivery
- Response to your inquiry within 24 hours
- We provide support in Chinese, English, French, German, Japanese and Spanish
- Extensive multi-media technical resources to help you
- We investigate all quality concerns to ensure our products perform to the highest standards

If the product does not perform as described on this datasheet, we will offer a refund or replacement. For full details of the Abpromise, please visit <https://www.abcam.com/abpromise> or contact our technical team.

Terms and conditions

- Guarantee only valid for products bought direct from Abcam or one of our authorized distributors