


Product datasheet

Anti-CKAP2/LB1 antibody ab85889

2 Images

Overview

| | |
|----------------------------|---|
| Product name | Anti-CKAP2/LB1 antibody |
| Description | Rabbit polyclonal to CKAP2/LB1 |
| Host species | Rabbit |
| Tested applications | Suitable for: WB, IP |
| Species reactivity | Reacts with: Human Predicted to work with: Gorilla, Orangutan  |
| Immunogen | Synthetic peptide corresponding to Human CKAP2/LB1 aa 633-683. Database link: NP_001091995.1 |
| Positive control | HeLa whole cell lysate. |
| General notes | <p>The Life Science industry has been in the grips of a reproducibility crisis for a number of years. Abcam is leading the way in addressing this with our range of recombinant monoclonal antibodies and knockout edited cell lines for gold-standard validation. Please check that this product meets your needs before purchasing.</p> <p>If you have any questions, special requirements or concerns, please send us an inquiry and/or contact our Support team ahead of purchase. Recommended alternatives for this product can be found below, along with publications, customer reviews and Q&As</p> |

Properties

| | |
|-----------------------------|--|
| Form | Liquid |
| Storage instructions | Shipped at 4°C. Upon delivery aliquot and store at -20°C. Avoid freeze / thaw cycles. |
| Storage buffer | pH: 7 Preservative: 0.09% Sodium azide Constituent: Tris citrate/phosphate |
| Purity | Immunogen affinity purified |
| Purification notes | ab85889 was affinity purified using an epitope specific to CKAP2/LB1 immobilized on solid support. |
| Clonality | Polyclonal |
| Isotype | IgG |

Applications

The Abpromise guarantee

Our **Abpromise guarantee** covers the use of ab85889 in the following tested applications.

The application notes include recommended starting dilutions; optimal dilutions/concentrations should be determined by the end user.

| Application | Abreviews | Notes |
|-------------|-----------|---|
| WB | | 1/2000 - 1/10000. Predicted molecular weight: 77 kDa. |
| IP | | Use at 2-5 µg/mg of lysate. |

Target

Function

Possesses microtubule stabilizing properties. Involved in regulating aneuploidy, cell cycling, and cell death in a p53/TP53-dependent manner.

Tissue specificity

Abundant in testis, thymus, and in tumor derived cell lines, while barely detectable in liver, prostate, and kidney.

Sequence similarities

Belongs to the CKAP2 family.

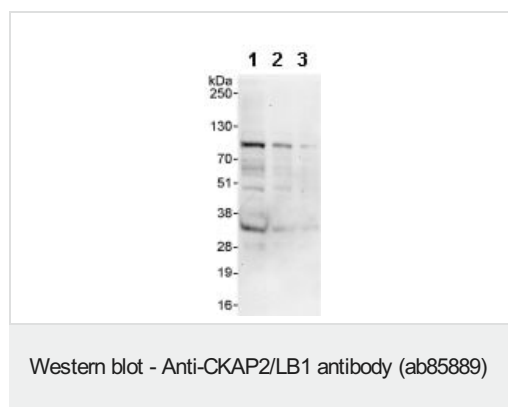
Developmental stage

Present at the G1/S boundary. Accumulates as cells progress from S to G2 into mitosis. Rapidly degraded during mitosis exit by CDH1-activated anaphase promoting complex/cyclosome (APC/C).

Cellular localization

Cytoplasm > cytoskeleton. Cytoplasm > cytoskeleton. Cytoplasm > cytoskeleton > spindle. Cytoplasm > cytoskeleton > spindle pole. Contrary to the ectopically expressed protein, endogenous CKAP2 does not colocalize with microtubules in G1, S and early G2. At late G2 and prophase after separation of duplicated centrosomes, colocalizes with gamma-tubulin and centrosome-proximal microtubules. From prometaphase through anaphase B, colocalizes with mitotic spindle poles and spindle microtubules. During cytokinesis, absent from midbody microtubules.

Images



All lanes : Anti-CKAP2/LB1 antibody (ab85889) at 0.4 µg/ml

Lane 1 : HeLa whole cell lysate at 50 µg

Lane 2 : HeLa whole cell lysate at 15 µg

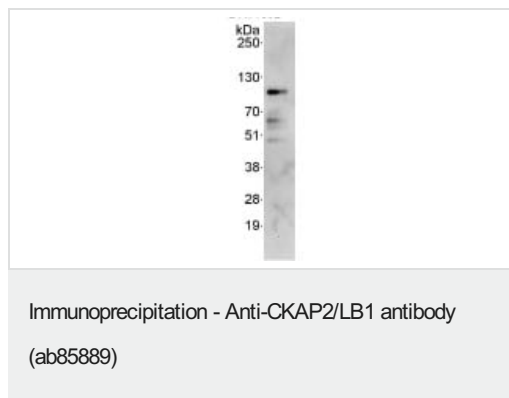
Lane 3 : HeLa whole cell lysate at 5 µg

Developed using the ECL technique.

Predicted band size: 77 kDa

Observed band size: 77 kDa

Exposure time: 90 seconds



Detection of CKAP2/LB1 by Western Blot of Immunoprecipitate.
ab85889, at 1 µg/ml, staining CKAP2/LB1 in HeLa whole cell lysate
immunoprecipitated using ab85889 at 3 µg/mg lysate (1 mg/IP;
20% of IP loaded/lane).

Detection: Chemiluminescence with exposure time of 90 seconds.

Please note: All products are "FOR RESEARCH USE ONLY. NOT FOR USE IN DIAGNOSTIC PROCEDURES"

Our Abpromise to you: Quality guaranteed and expert technical support

- Replacement or refund for products not performing as stated on the datasheet
- Valid for 12 months from date of delivery
- Response to your inquiry within 24 hours
- We provide support in Chinese, English, French, German, Japanese and Spanish
- Extensive multi-media technical resources to help you
- We investigate all quality concerns to ensure our products perform to the highest standards

If the product does not perform as described on this datasheet, we will offer a refund or replacement. For full details of the Abpromise, please visit <https://www.abcam.com/abpromise> or contact our technical team.

Terms and conditions

- Guarantee only valid for products bought direct from Abcam or one of our authorized distributors