


## Product datasheet

### Anti-CKS2 antibody [EPR7946(2)] ab155078

Recombinant **RabMAb**

★★★★★ **1 Abreviews** **8 References** **4 Images**

#### Overview

<b>Product name</b>	Anti-CKS2 antibody [EPR7946(2)]
<b>Description</b>	Rabbit monoclonal [EPR7946(2)] to CKS2
<b>Host species</b>	Rabbit
<b>Tested applications</b>	<b>Suitable for:</b> WB, IHC-P <b>Unsuitable for:</b> Flow Cyt or ICC/IF
<b>Species reactivity</b>	<b>Reacts with:</b> Human <b>Predicted to work with:</b> Mouse, Rat, Drosophila melanogaster 
<b>Immunogen</b>	Synthetic peptide. This information is proprietary to Abcam and/or its suppliers.
<b>Positive control</b>	Caco-2, 293T and MOLT4 cell lysates; Human cervical carcinoma and Human kidney tissues.
<b>General notes</b>	<p>This product is a recombinant monoclonal antibody, which offers several advantages including:</p> <ul style="list-style-type: none"> <li>- High batch-to-batch consistency and reproducibility</li> <li>- Improved sensitivity and specificity</li> <li>- Long-term security of supply</li> <li>- Animal-free production</li> </ul> <p>For more information <a href="#">see here</a>.</p> <p>Our RabMAb<sup>®</sup> technology is a patented hybridoma-based technology for making rabbit monoclonal antibodies. For details on our patents, please refer to <a href="#">RabMAb<sup>®</sup> patents</a>.</p>

#### Properties

<b>Form</b>	Liquid
<b>Storage instructions</b>	Shipped at 4°C. Upon delivery aliquot and store at -20°C. Avoid repeated freeze / thaw cycles.
<b>Storage buffer</b>	pH: 7.2 Preservative: 0.01% Sodium azide Constituents: 9% PBS, 40% Glycerol (glycerin, glycerine), 0.05% BSA, 50% Tissue culture supernatant
<b>Purity</b>	Protein A purified
<b>Clonality</b>	Monoclonal
<b>Clone number</b>	EPR7946(2)

Isotype

IgG

## Applications

### The Abpromise guarantee

Our **Abpromise guarantee** covers the use of ab155078 in the following tested applications.

The application notes include recommended starting dilutions; optimal dilutions/concentrations should be determined by the end user.

Application	Abreviews	Notes
WB	★★★★★ (1)	1/1000 - 1/10000. Predicted molecular weight: 10 kDa.
IHC-P		1/50 - 1/100. Perform heat mediated antigen retrieval with citrate buffer pH 6 before commencing with IHC staining protocol.

### Application notes

Is unsuitable for Flow Cyt or ICC/IF.

## Target

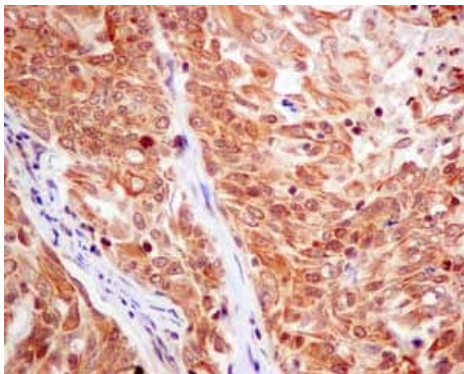
### Function

Binds to the catalytic subunit of the cyclin dependent kinases and is essential for their biological function.

### Sequence similarities

Belongs to the CKS family.

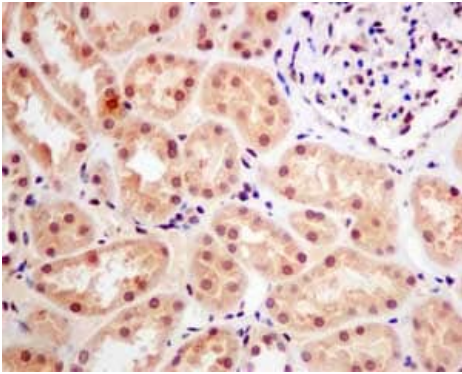
## Images



Immunohistochemical analysis of paraffin-embedded Human cervical carcinoma tissue labeling CKS2 with ab155078 at 1/50 dilution.

Perform heat mediated antigen retrieval with citrate buffer pH 6 before commencing with IHC staining protocol.

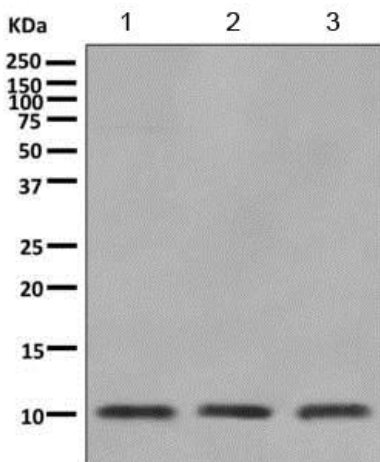
Immunohistochemistry (Formalin/PFA-fixed paraffin-embedded sections) - Anti-CKS2 antibody [EPR7946(2)] (ab155078)



Immunohistochemistry (Formalin/PFA-fixed paraffin-embedded sections) - Anti-CKS2 antibody [EPR7946(2)] (ab155078)

Immunohistochemical analysis of paraffin-embedded Human kidney tissue, labeling CKS2 with ab155078 at 1/50 dilution.

Perform heat mediated antigen retrieval with citrate buffer pH 6 before commencing with IHC staining protocol.



Western blot - Anti-CKS2 antibody [EPR7946(2)] (ab155078)

**All lanes :** Anti-CKS2 antibody [EPR7946(2)] (ab155078) at 1/1000 dilution

**Lane 1 :** Caco-2 cell lysate

**Lane 2 :** 293T cell lysate

**Lane 3 :** MOLT4 cell lysate

Lysates/proteins at 10 µg per lane.

**Predicted band size:** 10 kDa

### Why choose a recombinant antibody?



**Research with confidence**  
Consistent and reproducible results



**Long-term and scalable supply**  
Recombinant technology



**Success from the first experiment**  
Confirmed specificity



**Ethical standards compliant**  
Animal-free production

Anti-CKS2 antibody [EPR7946(2)] (ab155078)

**Please note:** All products are "FOR RESEARCH USE ONLY. NOT FOR USE IN DIAGNOSTIC PROCEDURES"

### Our Abpromise to you: Quality guaranteed and expert technical support

---

- Replacement or refund for products not performing as stated on the datasheet
- Valid for 12 months from date of delivery
- Response to your inquiry within 24 hours
- We provide support in Chinese, English, French, German, Japanese and Spanish
- Extensive multi-media technical resources to help you
- We investigate all quality concerns to ensure our products perform to the highest standards

If the product does not perform as described on this datasheet, we will offer a refund or replacement. For full details of the Abpromise, please visit <https://www.abcam.com/abpromise> or contact our technical team.

### Terms and conditions

---

- Guarantee only valid for products bought direct from Abcam or one of our authorized distributors