


Product datasheet

Anti-Clathrin heavy chain antibody ab59710

★★★★☆ [4 Abreviews](#) [6 References](#) [2 Images](#)

Overview

Product name	Anti-Clathrin heavy chain antibody
Description	Rabbit polyclonal to Clathrin heavy chain
Host species	Rabbit
Tested applications	Suitable for: IHC-P
Species reactivity	Predicted to work with: Chicken, Cow, Xenopus laevis, Caenorhabditis elegans, Zebrafish, a wide range of other species 
Immunogen	Synthetic peptide corresponding to Rat Clathrin heavy chain aa 619-638. Sequence: KAGLLQRALEHFTDLYDIKR Run BLAST with Run BLAST with
Positive control	IHC-P: Non-ciliated bronchiolar cells (Clara cells).
General notes	<p>The Life Science industry has been in the grips of a reproducibility crisis for a number of years. Abcam is leading the way in addressing this with our range of recombinant monoclonal antibodies and knockout edited cell lines for gold-standard validation. Please check that this product meets your needs before purchasing.</p> <p>If you have any questions, special requirements or concerns, please send us an inquiry and/or contact our Support team ahead of purchase. Recommended alternatives for this product can be found below, along with publications, customer reviews and Q&As</p>

Properties

Form	Liquid
Storage instructions	Shipped at 4°C. Store at +4°C short term (1-2 weeks). Upon delivery aliquot. Store at -20°C or -80°C. Avoid freeze / thaw cycle.
Storage buffer	Preservative: 0.02% Thimerosal (merthiolate) Constituent: Whole serum
Purity	Whole antiserum
Clonality	Polyclonal
Isotype	IgG

Applications

The Abpromise guarantee

Our **Abpromise guarantee** covers the use of ab59710 in the following tested applications.

The application notes include recommended starting dilutions; optimal dilutions/concentrations should be determined by the end user.

Application	Abreviews	Notes
IHC-P		Use at an assay dependent concentration.

Target

Function

Clathrin is the major protein of the polyhedral coat of coated pits and vesicles. Two different adapter protein complexes link the clathrin lattice either to the plasma membrane or to the trans-Golgi network.

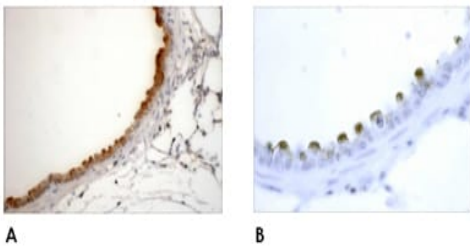
Sequence similarities

Belongs to the clathrin heavy chain family.

Cellular localization

Cytoplasmic vesicle membrane. Membrane > coated pit. Melanosome. Cytoplasmic face of coated pits and vesicles. Identified by mass spectrometry in melanosome fractions from stage I to stage IV.

Images

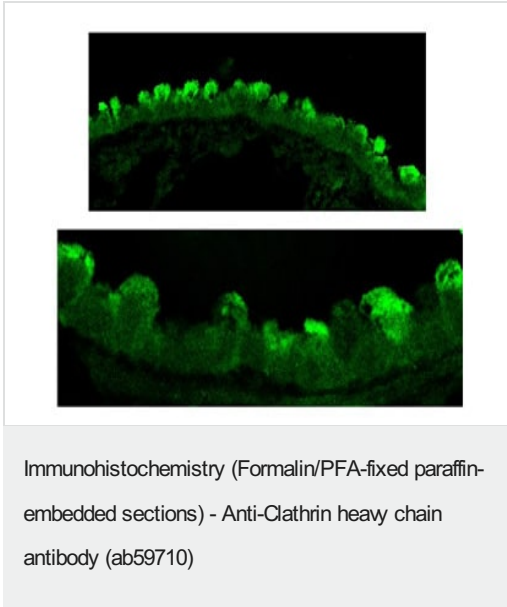


Immunohistochemistry (Formalin/PFA-fixed paraffin-embedded sections) - Anti-Clathrin heavy chain antibody (ab59710)

ab59710 at 1/1000, overnight, secondary antibody biotinylated goat anti-sheep at 1/3000.

Figure A is a low power image showing intense staining of non-ciliated bronchiolar cells (Clara cells) and lesser staining in alveolar type II cells.

Figure B is a higher power image of the staining of the non ciliated bronchiolar cells.



ab59710 at 1/100, overnight, secondary antibody donkey anti-rabbit Cy2[®] at 1/50. Confocal image shows intense staining of non-ciliated bronchiolar cells (Clara cells).

Immunohistochemistry (Formalin/PFA-fixed paraffin-embedded sections) - Anti-Clathrin heavy chain antibody (ab59710)

Please note: All products are "FOR RESEARCH USE ONLY. NOT FOR USE IN DIAGNOSTIC PROCEDURES"

Our Abpromise to you: Quality guaranteed and expert technical support

- Replacement or refund for products not performing as stated on the datasheet
- Valid for 12 months from date of delivery
- Response to your inquiry within 24 hours
- We provide support in Chinese, English, French, German, Japanese and Spanish
- Extensive multi-media technical resources to help you
- We investigate all quality concerns to ensure our products perform to the highest standards

If the product does not perform as described on this datasheet, we will offer a refund or replacement. For full details of the Abpromise, please visit <https://www.abcam.com/abpromise> or contact our technical team.

Terms and conditions

- Guarantee only valid for products bought direct from Abcam or one of our authorized distributors