

Product datasheet

Anti-Clathrin heavy chain antibody [TD.1] ab24578

[9 References](#) [1 Image](#)

Overview

Product name	Anti-Clathrin heavy chain antibody [TD.1]
Description	Mouse monoclonal [TD.1] to Clathrin heavy chain
Host species	Mouse
Specificity	This antibody reacts with clathrin heavy chains (CHC).
Tested applications	Suitable for: ICC/IF Unsuitable for: IP
Species reactivity	Reacts with: Human
Immunogen	This antibody was raised using the globular N terminal domain of clathrin heavy chain.
Positive control	Methanol fixed HeLa cells for IF.
General notes	<p>The Life Science industry has been in the grips of a reproducibility crisis for a number of years. Abcam is leading the way in addressing this with our range of recombinant monoclonal antibodies and knockout edited cell lines for gold-standard validation. Please check that this product meets your needs before purchasing.</p> <p>If you have any questions, special requirements or concerns, please send us an inquiry and/or contact our Support team ahead of purchase. Recommended alternatives for this product can be found below, along with publications, customer reviews and Q&As</p>

Properties

Form	Liquid
Storage instructions	Shipped at 4°C. Upon delivery aliquot and store at -20°C. Avoid freeze / thaw cycles.
Storage buffer	Preservative: 0.03% Thimerosal (merthiolate)
Purity	Protein G purified
Clonality	Monoclonal
Clone number	TD.1
Isotype	IgG1
Light chain type	kappa

Applications

The Abpromise guarantee

Our **Abpromise guarantee** covers the use of ab24578 in the following tested applications.

The application notes include recommended starting dilutions; optimal dilutions/concentrations should be determined by the end user.

Application	Abreviews	Notes
ICC/IF		Use at an assay dependent concentration.

Application notes

Is unsuitable for IP.

Target

Function

Clathrin is the major protein of the polyhedral coat of coated pits and vesicles. Two different adapter protein complexes link the clathrin lattice either to the plasma membrane or to the trans-Golgi network.

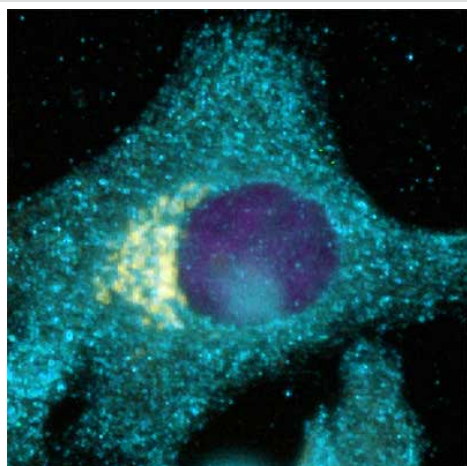
Sequence similarities

Belongs to the clathrin heavy chain family.

Cellular localization

Cytoplasmic vesicle membrane. Membrane > coated pit. Melanosome. Cytoplasmic face of coated pits and vesicles. Identified by mass spectrometry in melanosome fractions from stage I to stage IV.

Images



ab24578 at a 1/200 dilution staining clathrin triskelion (blue) throughout the methanol fixed HeLa cells by Immunocytochemistry/Immunofluorescence. The Golgi is brilliantly stained by Giantin (yellow). Secondary antibodies used were a goat anti-mouse alexafluor AF546 and a goat anti-rabbit alexafluor AF488 applied at 1 ug/mL. The DNA was visualized with DAPI at 1 ug/mL. The colors of this image were altered.

Immunocytochemistry/ Immunofluorescence - Anti-Clathrin heavy chain antibody [TD.1] (ab24578)

Please note: All products are "FOR RESEARCH USE ONLY. NOT FOR USE IN DIAGNOSTIC PROCEDURES"

Our Abpromise to you: Quality guaranteed and expert technical support

- Replacement or refund for products not performing as stated on the datasheet
- Valid for 12 months from date of delivery
- Response to your inquiry within 24 hours

- We provide support in Chinese, English, French, German, Japanese and Spanish
- Extensive multi-media technical resources to help you
- We investigate all quality concerns to ensure our products perform to the highest standards

If the product does not perform as described on this datasheet, we will offer a refund or replacement. For full details of the Abpromise, please visit <https://www.abcam.com/abpromise> or contact our technical team.

Terms and conditions

- Guarantee only valid for products bought direct from Abcam or one of our authorized distributors