




# Anti-Clathrin light chain antibody ab77542

[1 References](#) [1 Image](#)

### Overview

<b>Product name</b>	Anti-Clathrin light chain antibody
<b>Description</b>	Goat polyclonal to Clathrin light chain
<b>Host species</b>	Goat
<b>Specificity</b>	Expected to recognize all reported isoforms of light chains a and b.
<b>Tested applications</b>	<b>Suitable for:</b> WB
<b>Species reactivity</b>	<b>Reacts with:</b> Human <b>Predicted to work with:</b> Mouse, Rat, Horse, Chicken, Cow, Dog, Pig, Xenopus laevis, Chimpanzee, Zebrafish, Macaque monkey 
<b>Immunogen</b>	Synthetic peptide: CDFNPKSSKQAKD from Human Clathrin light chain(NP_001824.1; NP_009027.1; NP_001070145.1; NP_001825.1; NP_009028.1) <div>  <a href="#">Run BLAST with</a>  <a href="#">Run BLAST with</a> </div>
<b>Positive control</b>	Recombinant Human Clathrin light chain protein ( <a href="#">ab126693</a> ) can be used as a positive control in WB. Human frontal cortex lysate
<b>General notes</b>	<p>The Life Science industry has been in the grips of a reproducibility crisis for a number of years. Abcam is leading the way in addressing this with our range of recombinant monoclonal antibodies and knockout edited cell lines for gold-standard validation. Please check that this product meets your needs before purchasing.</p> <p>If you have any questions, special requirements or concerns, please send us an inquiry and/or contact our Support team ahead of purchase. Recommended alternatives for this product can be found below, along with publications, customer reviews and Q&amp;As</p>

### Properties

<b>Form</b>	Liquid
<b>Storage instructions</b>	Shipped at 4°C. Upon delivery aliquot and store at -20°C or -80°C. Avoid repeated freeze / thaw cycles.
<b>Storage buffer</b>	pH: 7.30 Preservative: 0.02% Sodium azide Constituents: 0.5% BSA, Tris buffered saline

<b>Purity</b>	Immunogen affinity purified
<b>Purification notes</b>	Purified from goat serum by ammonium sulphate precipitation, followed by antigen affinity chromatography using the immunizing peptide.
<b>Clonality</b>	Polyclonal
<b>Isotype</b>	IgG

## Applications

**The Abpromise guarantee** Our **Abpromise guarantee** covers the use of ab77542 in the following tested applications. The application notes include recommended starting dilutions; optimal dilutions/concentrations should be determined by the end user.

Application	Abreviews	Notes
WB		

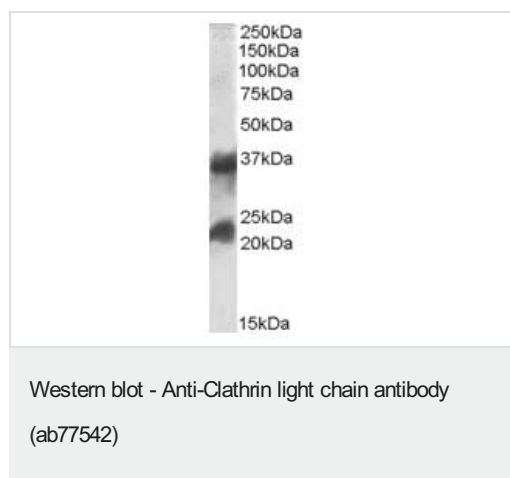
**Application notes** ELISA: Use at an assay dependent dilution. Antibody detection limit dilution: 1/32000.  
WB: Use at a concentration of 0.1 - 0.3 µg/ml. Predicted molecular weight: 23 kDa.

Not yet tested in other applications.  
Optimal dilutions/concentrations should be determined by the end user.

## Target

**Function** Clathrin is the major protein of the polyhedral coat of coated pits and vesicles.  
**Cellular localization** Cytoplasmic vesicle membrane. Membrane > coated pit. Cytoplasmic face of coated pits and vesicles.

## Images



Anti-Clathrin light chain antibody (ab77542) at 0.1 µg/ml + Human frontal cortex lysate in RIPA buffer at 35 µg

**Predicted band size:** 23 kDa  
**Observed band size:** 23 kDa  
**Additional bands at:** 35 kDa (possible isoform)

The observed molecular weight of ~35kDa corresponds to earlier findings in literature with different antibodies (Okamoto et al, Am J Physiol Cell Physiol. 2000 Sep;279(3):C833-51.; PMID: 10942733)

**Please note:** All products are "FOR RESEARCH USE ONLY. NOT FOR USE IN DIAGNOSTIC PROCEDURES"

### **Our Abpromise to you: Quality guaranteed and expert technical support**

---

- Replacement or refund for products not performing as stated on the datasheet
- Valid for 12 months from date of delivery
- Response to your inquiry within 24 hours
  
- We provide support in Chinese, English, French, German, Japanese and Spanish
- Extensive multi-media technical resources to help you
- We investigate all quality concerns to ensure our products perform to the highest standards

If the product does not perform as described on this datasheet, we will offer a refund or replacement. For full details of the Abpromise, please visit <https://www.abcam.com/abpromise> or contact our technical team.

### **Terms and conditions**

---

- Guarantee only valid for products bought direct from Abcam or one of our authorized distributors