


Anti-Claudin 10 antibody ab52234

★★★★★ [2 Abreviews](#) [5 References](#) [1 Image](#)

Overview

Product name	Anti-Claudin 10 antibody
Description	Rabbit polyclonal to Claudin 10
Host species	Rabbit
Tested applications	Suitable for: ELISA, WB, IHC-P
Species reactivity	Reacts with: Human Predicted to work with: Mouse 
Immunogen	Synthetic peptide (Human)
Positive control	Extracts from LOVO cells.
General notes	<p>The Life Science industry has been in the grips of a reproducibility crisis for a number of years. Abcam is leading the way in addressing this with our range of recombinant monoclonal antibodies and knockout edited cell lines for gold-standard validation. Please check that this product meets your needs before purchasing.</p> <p>If you have any questions, special requirements or concerns, please send us an inquiry and/or contact our Support team ahead of purchase. Recommended alternatives for this product can be found below, along with publications, customer reviews and Q&As</p>

Properties

Form	Liquid
Storage instructions	Shipped at 4°C. Store at -20°C. Stable for 12 months at -20°C.
Storage buffer	pH: 7.40 Preservative: 0.02% Sodium azide Constituents: PBS, 50% Glycerol (glycerin, glycerine), 0.87% Sodium chloride
Purity	Immunogen affinity purified
Clonality	Polyclonal
Isotype	IgG

Applications

The **Abpromise guarantee** Our **Abpromise guarantee** covers the use of ab52234 in the following tested applications.

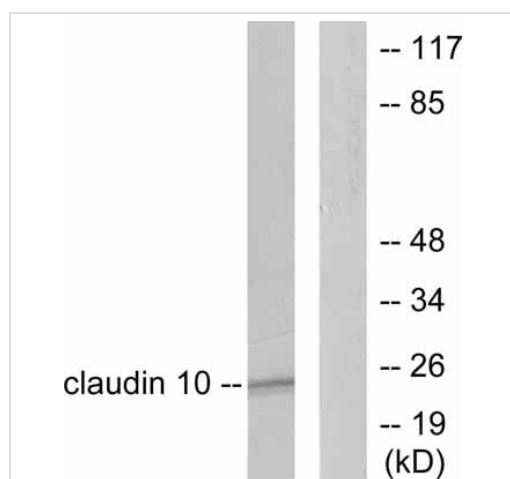
The application notes include recommended starting dilutions; optimal dilutions/concentrations should be determined by the end user.

Application	Abreviews	Notes
ELISA		Use at an assay dependent concentration.
WB	★★★★★ (1)	1/300 - 1/1000. Detects a band of approximately 24 kDa (predicted molecular weight: 24 kDa).
IHC-P	★★★★★ (1)	Use at an assay dependent concentration.

Target

Function	Plays a major role in tight junction-specific obliteration of the intercellular space, through calcium-independent cell-adhesion activity.
Sequence similarities	Belongs to the claudin family.
Cellular localization	Cell junction > tight junction. Cell membrane.

Images



Western blot - Anti-Claudin 10 antibody (ab52234)

All lanes : Anti-Claudin 10 antibody (ab52234) at 1/300 dilution

Lane 1 : Extracts from LOVO cells, untreated.

Lane 2 : Extracts from LOVO cells, treated with the immunising peptide.

Predicted band size: 24 kDa

Observed band size: 24 kDa

Please note: All products are "FOR RESEARCH USE ONLY. NOT FOR USE IN DIAGNOSTIC PROCEDURES"

Our Abpromise to you: Quality guaranteed and expert technical support

- Replacement or refund for products not performing as stated on the datasheet
- Valid for 12 months from date of delivery
- Response to your inquiry within 24 hours
- We provide support in Chinese, English, French, German, Japanese and Spanish
- Extensive multi-media technical resources to help you

- We investigate all quality concerns to ensure our products perform to the highest standards

If the product does not perform as described on this datasheet, we will offer a refund or replacement. For full details of the Abpromise, please visit <https://www.abcam.com/abpromise> or contact our technical team.

Terms and conditions

- Guarantee only valid for products bought direct from Abcam or one of our authorized distributors