

### Anti-Claudin 7/CLDN-7 antibody ab27487

★★★★★ [12 Abreviews](#) [39 References](#) [1 Image](#)

#### Overview

<b>Product name</b>	Anti-Claudin 7/CLDN-7 antibody
<b>Description</b>	Rabbit polyclonal to Claudin 7/CLDN-7
<b>Host species</b>	Rabbit
<b>Tested applications</b>	<b>Suitable for:</b> ICC, IHC-Fr, WB, IHC-P, ICC/IF
<b>Species reactivity</b>	<b>Reacts with:</b> Mouse, Rat, Human
<b>Immunogen</b>	Synthetic peptide within Human Claudin 7/CLDN-7 aa 150 to the C-terminus (C terminal). The exact sequence is proprietary. Database link: <a href="#">O95471</a>

#### General notes

**This product is FOR RESEARCH USE ONLY. For commercial use, please contact [partnerships@abcam.com](mailto:partnerships@abcam.com).**

The Life Science industry has been in the grips of a reproducibility crisis for a number of years. Abcam is leading the way in addressing this with our range of recombinant monoclonal antibodies and knockout edited cell lines for gold-standard validation. Please check that this product meets your needs before purchasing.

If you have any questions, special requirements or concerns, please send us an inquiry and/or contact our Support team ahead of purchase. Recommended alternatives for this product can be found below, along with publications, customer reviews and Q&As

#### Properties

<b>Form</b>	Liquid
<b>Storage instructions</b>	Shipped at 4°C. Upon delivery aliquot and store at -20°C. Avoid freeze / thaw cycles.
<b>Storage buffer</b>	pH: 7.60 Preservative: 0.1% Sodium azide Constituents: PBS, 1% BSA
<b>Purity</b>	Immunogen affinity purified
<b>Purification notes</b>	Ab27487 is affinity purified.
<b>Clonality</b>	Polyclonal
<b>Isotype</b>	IgG

## Applications

### The Abpromise guarantee

Our **Abpromise guarantee** covers the use of ab27487 in the following tested applications.

The application notes include recommended starting dilutions; optimal dilutions/concentrations should be determined by the end user.

Application	Abreviews	Notes
ICC	★★★★★ (1)	Use at an assay dependent concentration.
IHC-Fr	★★★★★ (3)	Use at an assay dependent concentration.
WB	★★★★★ (5)	Use at an assay dependent concentration. Predicted molecular weight: 22 kDa.
IHC-P	★★★★★ (3)	1/200. Perform heat mediated antigen retrieval before commencing with IHC staining protocol. In particular, boil tissue sections in 10mM citrate buffer pH 6.0 for 10 min then cool at room temperature for 20 min.
ICC/IF		Use at an assay dependent concentration. PubMed: 21525338

## Target

### Function

Plays a major role in tight junction-specific obliteration of the intercellular space.

### Tissue specificity

Expressed in kidney, lung and prostate. Isoform 1 seems to be predominant, except in some normal prostate samples, where isoform 2 is the major form. Down-regulated in breast cancers, including ductal carcinoma in situ (DCIS), lobular carcinoma in situ (LCIS) and invasive ductal carcinoma (IDC) (at protein level), as well as in several cancer cell lines. Loss of expression correlates with histological grade, occurring predominantly in high-grade lesions.

### Sequence similarities

Belongs to the claudin family.

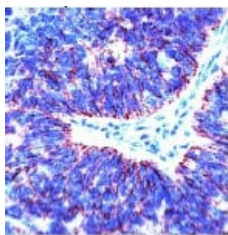
### Post-translational modifications

Phosphorylated.

### Cellular localization

Cell membrane. Lateral cell membrane. Cell junction > tight junction. Co-localizes with EPCAM at the lateral cell membrane and tight junction.

## Images



Ab27487, at a dilution of 1/200, staining Claudin 7/CLDN-7 in formalin fixed paraffin embedded human colon carcinoma tissue section by Immunohistochemistry.

Immunohistochemistry (Formalin/PFA-fixed paraffin-embedded sections) - Anti-Claudin 7/CLDN-7 antibody (ab27487)

**Please note:** All products are "FOR RESEARCH USE ONLY. NOT FOR USE IN DIAGNOSTIC PROCEDURES"

### **Our Abpromise to you: Quality guaranteed and expert technical support**

---

- Replacement or refund for products not performing as stated on the datasheet
- Valid for 12 months from date of delivery
- Response to your inquiry within 24 hours
- We provide support in Chinese, English, French, German, Japanese and Spanish
- Extensive multi-media technical resources to help you
- We investigate all quality concerns to ensure our products perform to the highest standards

If the product does not perform as described on this datasheet, we will offer a refund or replacement. For full details of the Abpromise, please visit <https://www.abcam.com/abpromise> or contact our technical team.

### **Terms and conditions**

---

- Guarantee only valid for products bought direct from Abcam or one of our authorized distributors