



# Anti-Claudin 8 antibody ab211439

[2 References](#) [3 Images](#)

### Overview

<b>Product name</b>	Anti-Claudin 8 antibody
<b>Description</b>	Rabbit polyclonal to Claudin 8
<b>Host species</b>	Rabbit
<b>Tested applications</b>	<b>Suitable for:</b> IHC-P, WB, Flow Cyt (Intra)
<b>Species reactivity</b>	<b>Reacts with:</b> Human
<b>Immunogen</b>	Synthetic peptide within Human Claudin 8 aa 100-200 (internal sequence) conjugated to keyhole limpet haemocyanin. The exact immunogen sequence used to generate this antibody is proprietary information. If additional detail on the immunogen is needed to determine the suitability of the antibody for your needs, please <a href="#">contact</a> our Scientific Support team to discuss your requirements. Database link: <a href="#">P56748</a>
	<div>  <a href="#">Run BLAST with</a> </div> <div>  <a href="#">Run BLAST with</a> </div>
<b>Positive control</b>	IHC-P: Human colon tissue. WB: 293 cell lysate. Flow Cyt (Intra): 293 cells.
<b>General notes</b>	<p>The Life Science industry has been in the grips of a reproducibility crisis for a number of years. Abcam is leading the way in addressing this with our range of recombinant monoclonal antibodies and knockout edited cell lines for gold-standard validation. Please check that this product meets your needs before purchasing.</p> <p>If you have any questions, special requirements or concerns, please send us an inquiry and/or contact our Support team ahead of purchase. Recommended alternatives for this product can be found below, along with publications, customer reviews and Q&amp;As</p>

### Properties

<b>Form</b>	Liquid
<b>Storage instructions</b>	Shipped at 4°C. Store at +4°C short term (1-2 weeks). Upon delivery aliquot. Store at -20°C long term. Avoid freeze / thaw cycle.
<b>Storage buffer</b>	pH: 7.4 Preservative: 0.09% Sodium azide Constituent: 99% PBS
<b>Purity</b>	Immunogen affinity purified
<b>Clonality</b>	Polyclonal

Isotype

IgG

## Applications

### The Abpromise guarantee

Our **Abpromise guarantee** covers the use of ab211439 in the following tested applications.

The application notes include recommended starting dilutions; optimal dilutions/concentrations should be determined by the end user.

Application	Abreviews	Notes
IHC-P		1/75. Perform heat mediated antigen retrieval before commencing with IHC staining protocol.
WB		1/1000. Predicted molecular weight: 25 kDa.
Flow Cyt (Intra)		1/10 - 1/50.

## Target

### Function

Plays a major role in tight junction-specific obliteration of the intercellular space.

### Tissue specificity

Expressed in the epididymis, mainly in the caput segment.

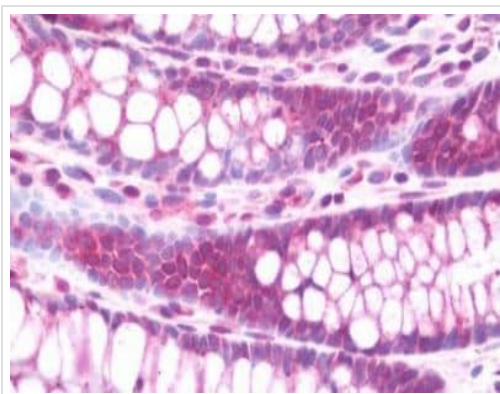
### Sequence similarities

Belongs to the claudin family.

### Cellular localization

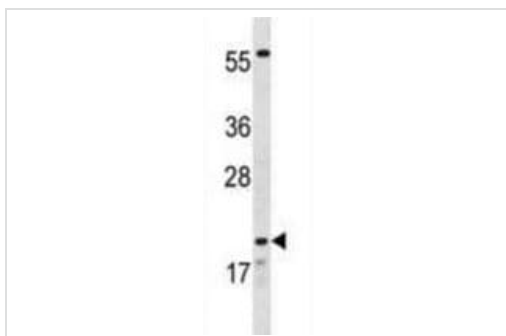
Cell junction > tight junction. Cell membrane. Localizes to tight junctions in all 3 segments of the epididymis, in the caput found in the lateral margins of principal cells, and in the corpus at the interface between basal and principal cells.

## Images



Immunohistochemical analysis of formalin-fixed, paraffin-embedded Human colon tissue labeling Claudin 8 with ab211439 at 1/75 dilution.

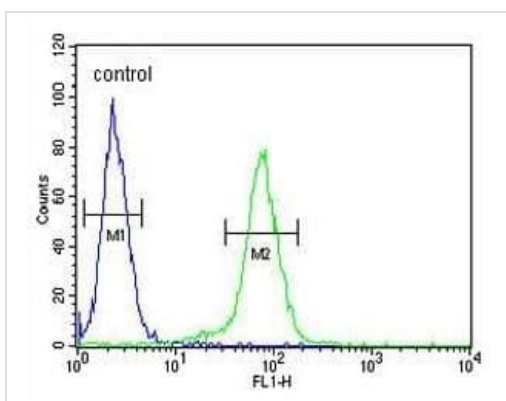
Immunohistochemistry (Formalin/PFA-fixed paraffin-embedded sections) - Anti-Claudin 8 antibody (ab211439)



Western blot - Anti-Claudin 8 antibody (ab211439)

Anti-Claudin 8 antibody (ab211439) at 1/1000 dilution + 293 cell lysate at 35 µg

**Predicted band size:** 25 kDa



Flow Cytometry (Intracellular) - Anti-Claudin 8 antibody (ab211439)

Intracellular flow cytometric analysis of 293 cells labeling Claudin 8 with ab211439 at 1/10 dilution (right histogram) compared to a negative control (left histogram). FITC-conjugated goat-anti-rabbit secondary antibodies were used for the analysis.

**Please note:** All products are "FOR RESEARCH USE ONLY. NOT FOR USE IN DIAGNOSTIC PROCEDURES"

### Our Abpromise to you: Quality guaranteed and expert technical support

- Replacement or refund for products not performing as stated on the datasheet
- Valid for 12 months from date of delivery
- Response to your inquiry within 24 hours
- We provide support in Chinese, English, French, German, Japanese and Spanish
- Extensive multi-media technical resources to help you
- We investigate all quality concerns to ensure our products perform to the highest standards

If the product does not perform as described on this datasheet, we will offer a refund or replacement. For full details of the Abpromise, please visit <https://www.abcam.com/abpromise> or contact our technical team.

### Terms and conditions

- Guarantee only valid for products bought direct from Abcam or one of our authorized distributors