




Product datasheet

Anti-Claudin 9 antibody [YD4E9] - BSA and Azide free ab187116

★★★★★ [1 Abreviews](#) [1 Image](#)

Overview

Product name	Anti-Claudin 9 antibody [YD4E9] - BSA and Azide free
Description	Rat monoclonal [YD4E9] to Claudin 9 - BSA and Azide free
Host species	Rat
Tested applications	Suitable for: Competitive ELISA, Flow Cyt
Species reactivity	Reacts with: Human Predicted to work with: Mouse 
Immunogen	Recombinant full length protein corresponding to Human Claudin 9 aa 1 to the C-terminus. Database link: O95484  Run BLAST with  Run BLAST with
Positive control	BOSC23 expressing Claudin 9 cDNA and native Claudin 9 expressed in mammalian cells.
General notes	<p>The Life Science industry has been in the grips of a reproducibility crisis for a number of years. Abcam is leading the way in addressing this with our range of recombinant monoclonal antibodies and knockout edited cell lines for gold-standard validation. Please check that this product meets your needs before purchasing.</p> <p>If you have any questions, special requirements or concerns, please send us an inquiry and/or contact our Support team ahead of purchase. Recommended alternatives for this product can be found below, along with publications, customer reviews and Q&As</p>

Properties

Form	Liquid
Storage instructions	Shipped at 4°C. Store at +4°C short term (1-2 weeks). Upon delivery aliquot. Store at -20°C long term. Avoid freeze / thaw cycle.
Storage buffer	pH: 7.20 Constituent: 100% PBS
Carrier free	Yes
Purity	Protein G purified
Clonality	Monoclonal
Clone number	YD4E9

Isotype

IgG2b

Applications

The Abpromise guarantee

Our **Abpromise guarantee** covers the use of ab187116 in the following tested applications.

The application notes include recommended starting dilutions; optimal dilutions/concentrations should be determined by the end user.

Application	Abreviews	Notes
Competitive ELISA		Use at an assay dependent concentration.
Flow Cyt	★★★★★ (1)	Use 1.2µg for 10 ⁶ cells. ab18536 - Rat monoclonal IgG2b, is suitable for use as an isotype control with this antibody.

Target

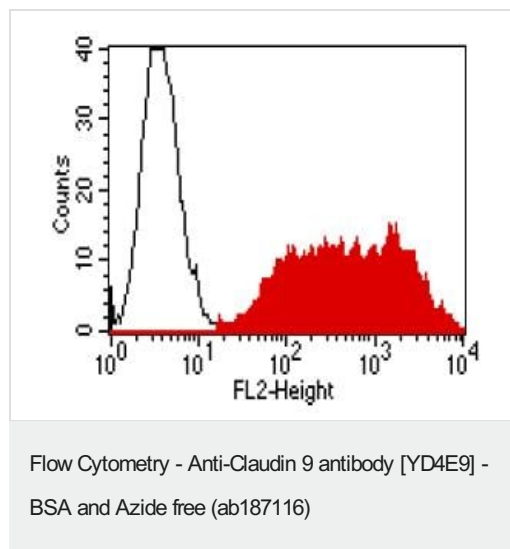
Relevance

Claudin 9 is a member of the claudin family. It is a four-transmembrane protein with WWCC motif and plays a major role in tight junction-specific obliteration of the intercellular space, through calcium-independent cell-adhesion activity.

Cellular localization

Cell Membrane (tight junctions)

Images



Flow cytometry analysis of BOSC23 cells transiently transfected with an expression vector encoding either Claudin 9 (red curve) or a control transfectant; using ab187116 at 1.2 µg/10⁶ cells. PE-conjugated secondary antibodies were used for the analysis.

Please note: All products are "FOR RESEARCH USE ONLY. NOT FOR USE IN DIAGNOSTIC PROCEDURES"

Our Abpromise to you: Quality guaranteed and expert technical support

- Replacement or refund for products not performing as stated on the datasheet
- Valid for 12 months from date of delivery

- Response to your inquiry within 24 hours
- We provide support in Chinese, English, French, German, Japanese and Spanish
- Extensive multi-media technical resources to help you
- We investigate all quality concerns to ensure our products perform to the highest standards

If the product does not perform as described on this datasheet, we will offer a refund or replacement. For full details of the Abpromise, please visit <https://www.abcam.com/abpromise> or contact our technical team.

Terms and conditions

- Guarantee only valid for products bought direct from Abcam or one of our authorized distributors