





## Product datasheet

### Anti-CLCA4 antibody ab121524

1 Image

#### Overview

<b>Product name</b>	Anti-CLCA4 antibody
<b>Description</b>	Rabbit polyclonal to CLCA4
<b>Host species</b>	Rabbit
<b>Tested applications</b>	<b>Suitable for:</b> IHC-P
<b>Species reactivity</b>	<b>Reacts with:</b> Human
<b>Immunogen</b>	antigen sequence: WVG MVHFDST ATIVNKLIQI KSSDERNTLM AGLPTYPLGG TSICSGIKYA FQVIGELHSQ LDGSEVLLLT DGEDNTASSC IDEV, corresponding to amino acids 56-139 of Human CLCA4. <a href="#"> Run BLAST with </a> <a href="#"> Run BLAST with </a>
<b>Positive control</b>	Human duodenum.
<b>General notes</b>	<p>The Life Science industry has been in the grips of a reproducibility crisis for a number of years. Abcam is leading the way in addressing this with our range of recombinant monoclonal antibodies and knockout edited cell lines for gold-standard validation. Please check that this product meets your needs before purchasing.</p> <p>If you have any questions, special requirements or concerns, please send us an inquiry and/or contact our Support team ahead of purchase. Recommended alternatives for this product can be found below, along with publications, customer reviews and Q&amp;As</p>

#### Properties

<b>Form</b>	Liquid
<b>Storage instructions</b>	Shipped at 4°C. Store at -20°C.
<b>Storage buffer</b>	pH: 7.20 Preservative: 0.02% Sodium azide Constituents: PBS, 40% Glycerol (glycerin, glycerine)
<b>Purity</b>	Immunogen affinity purified
<b>Clonality</b>	Polyclonal
<b>Isotype</b>	IgG

#### Applications

## The Abpromise guarantee

Our **Abpromise guarantee** covers the use of ab121524 in the following tested applications.

The application notes include recommended starting dilutions; optimal dilutions/concentrations should be determined by the end user.

Application	Abreviews	Notes
IHC-P		1/10 - 1/20. Perform heat mediated antigen retrieval with citrate buffer pH 6 before commencing with IHC staining protocol.

## Target

### Function

May be involved in mediating calcium-activated chloride conductance.

### Tissue specificity

Primarily expressed in the digestive tract, mainly in colon. Detected in smaller amounts in brain, urogenital organs, testis, and salivary and mammary glands. Highly expressed in the epithelial layer and submucosal gland of the inferior turbinate mucosa. Lower levels in the epithelial layer of nasal polyp.

### Sequence similarities

Belongs to the CLCR family.  
Contains 1 VWFA domain.

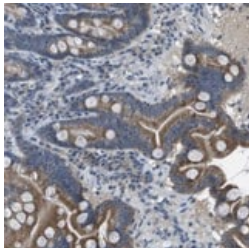
### Post-translational modifications

Processed at a monobasic residue to yield a larger N-terminal and a smaller C-terminal cleavage products of 90 to 110 and 30 to 35 kDa, respectively.

### Cellular localization

Cell membrane. Apical cell membrane. Secreted. The C-terminus 30 kDa form is anchored to the membrane (By similarity). The N-terminus 110 kDa form is released from the membrane triggered by an unknown stimulus.

## Images



ab121524, at 1/10 dilution, staining human duodenum by immunohistochemistry on paraffin embedded tissues (IHC-P).

Immunohistochemistry (Formalin/PFA-fixed paraffin-embedded sections) - Anti-CLCA4 antibody (ab121524)

**Please note:** All products are "FOR RESEARCH USE ONLY. NOT FOR USE IN DIAGNOSTIC PROCEDURES"

## Our Abpromise to you: Quality guaranteed and expert technical support

- Replacement or refund for products not performing as stated on the datasheet
- Valid for 12 months from date of delivery
- Response to your inquiry within 24 hours

- We provide support in Chinese, English, French, German, Japanese and Spanish
- Extensive multi-media technical resources to help you
- We investigate all quality concerns to ensure our products perform to the highest standards

If the product does not perform as described on this datasheet, we will offer a refund or replacement. For full details of the Abpromise, please visit <https://www.abcam.com/abpromise> or contact our technical team.

#### **Terms and conditions**

---

- Guarantee only valid for products bought direct from Abcam or one of our authorized distributors