




Product datasheet

Anti-CLEC12B antibody ab211452

[3 Images](#)

Overview

Product name	Anti-CLEC12B antibody
Description	Rabbit polyclonal to CLEC12B
Host species	Rabbit
Tested applications	Suitable for: IHC-P, WB
Species reactivity	Reacts with: Mouse, Human Predicted to work with: Cow 
Immunogen	Synthetic peptide within Human CLEC12B aa 200 to the C-terminus (C terminal) conjugated to keyhole limpet haemocyanin. The exact immunogen sequence used to generate this antibody is proprietary information. If additional detail on the immunogen is needed to determine the suitability of the antibody for your needs, please contact our Scientific Support team to discuss your requirements. NCBI Accession No. NP_001123470.1. Database link: Q2HXU8  Run BLAST with  Run BLAST with
Positive control	Human pancreas tissue; K562 cell lysate; Mouse testis tissue lysate.
General notes	<p>The Life Science industry has been in the grips of a reproducibility crisis for a number of years. Abcam is leading the way in addressing this with our range of recombinant monoclonal antibodies and knockout edited cell lines for gold-standard validation. Please check that this product meets your needs before purchasing.</p> <p>If you have any questions, special requirements or concerns, please send us an inquiry and/or contact our Support team ahead of purchase. Recommended alternatives for this product can be found below, along with publications, customer reviews and Q&As</p>

Properties

Form	Liquid
Storage instructions	Shipped at 4°C. Store at +4°C short term (1-2 weeks). Upon delivery aliquot. Store at -20°C long term. Avoid freeze / thaw cycle.
Storage buffer	pH: 7.4 Preservative: 0.09% Sodium azide Constituent: 99% PBS
Purity	Immunogen affinity purified

Clonality	Polyclonal
Isotype	IgG

Applications

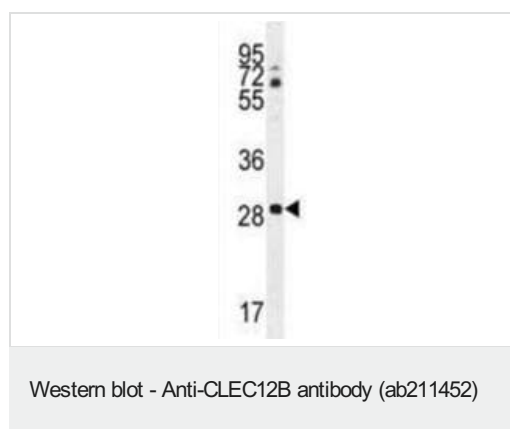
The Abpromise guarantee Our **Abpromise guarantee** covers the use of ab211452 in the following tested applications. The application notes include recommended starting dilutions; optimal dilutions/concentrations should be determined by the end user.

Application	Abreviews	Notes
IHC-P		1/100. Perform heat mediated antigen retrieval before commencing with IHC staining protocol.
WB		1/1000. Predicted molecular weight: 32 kDa.

Target

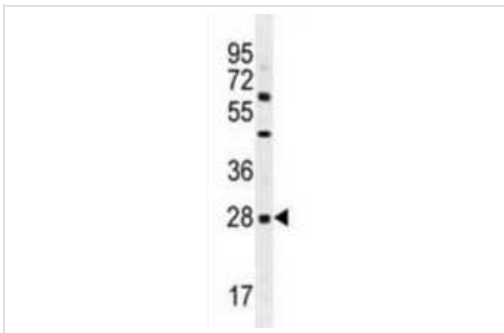
Function	Cell surface receptor that protects target cells against natural killer cell-mediated lysis. Modulates signaling cascades and mediates tyrosine phosphorylation of target MAP kinases.
Tissue specificity	Detected in colon, heart, kidney, liver, lung, mammary gland, ovary, spleen and testis.
Sequence similarities	Contains 1 C-type lectin domain.
Domain	Contains 1 copy of a cytoplasmic motif that is referred to as the immunoreceptor tyrosine-based inhibitor motif (ITIM). This motif is involved in modulation of cellular responses. The phosphorylated ITIM motif can bind the SH2 domain of several SH2-containing phosphatases.
Cellular localization	Cell membrane.

Images



Anti-CLEC12B antibody (ab211452) at 1/1000 dilution + K562 cell lysate at 35 µg

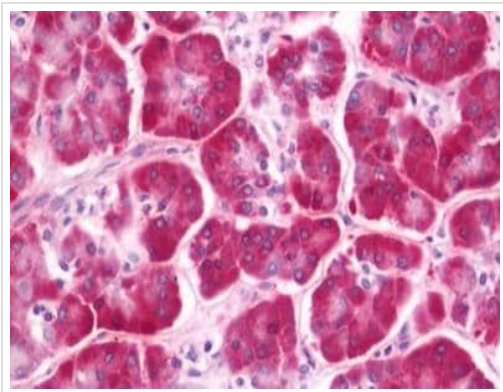
Predicted band size: 32 kDa



Western blot - Anti-CLEC12B antibody (ab211452)

Anti-CLEC12B antibody (ab211452) at 1/1000 dilution + Mouse testis tissue lysate at 35 μ g

Predicted band size: 32 kDa



Immunohistochemistry (Formalin/PFA-fixed paraffin-embedded sections) - Anti-CLEC12B antibody (ab211452)

Immunohistochemical analysis of formalin fixed, paraffin embedded Human pancreas tissue labeling CLEC12B with ab211452 at 1/100 dilution.

Please note: All products are "FOR RESEARCH USE ONLY. NOT FOR USE IN DIAGNOSTIC PROCEDURES"

Our Abpromise to you: Quality guaranteed and expert technical support

- Replacement or refund for products not performing as stated on the datasheet
- Valid for 12 months from date of delivery
- Response to your inquiry within 24 hours
- We provide support in Chinese, English, French, German, Japanese and Spanish
- Extensive multi-media technical resources to help you
- We investigate all quality concerns to ensure our products perform to the highest standards

If the product does not perform as described on this datasheet, we will offer a refund or replacement. For full details of the Abpromise, please visit <https://www.abcam.com/abpromise> or contact our technical team.

Terms and conditions

- Guarantee only valid for products bought direct from Abcam or one of our authorized distributors