

Anti-CLEC5A antibody ab203200

[1 References](#) [2 Images](#)

Overview

Product name	Anti-CLEC5A antibody
Description	Rabbit polyclonal to CLEC5A
Host species	Rabbit
Tested applications	Suitable for: Flow Cyt, IHC-P
Species reactivity	Reacts with: Human
Immunogen	Synthetic peptide within Mouse CLEC5A aa 50-150 conjugated to keyhole limpet haemocyanin. The exact immunogen sequence used to generate this antibody is proprietary information. If additional detail on the immunogen is needed to determine the suitability of the antibody for your needs, please contact our Scientific Support team to discuss your requirements. Database link: Q9R007

 [Run BLAST with](#)

 [Run BLAST with](#)

General notes

The Life Science industry has been in the grips of a reproducibility crisis for a number of years. Abcam is leading the way in addressing this with our range of recombinant monoclonal antibodies and knockout edited cell lines for gold-standard validation. Please check that this product meets your needs before purchasing.

If you have any questions, special requirements or concerns, please send us an inquiry and/or contact our Support team ahead of purchase. Recommended alternatives for this product can be found below, along with publications, customer reviews and Q&As

Properties

Form	Liquid
Storage instructions	Shipped at 4°C. Store at +4°C short term (1-2 weeks). Upon delivery aliquot. Store at -20°C long term. Avoid freeze / thaw cycle.
Storage buffer	pH: 7.40 Preservative: 0.02% Proclin 300 Constituents: 50% Glycerol (glycerin, glycerine), 1% BSA, 48.98% TBS, 1X
Purity	Protein A purified
Clonality	Polyclonal
Isotype	IgG

Applications

The Abpromise guarantee

Our **Abpromise guarantee** covers the use of ab203200 in the following tested applications.

The application notes include recommended starting dilutions; optimal dilutions/concentrations should be determined by the end user.

Application	Abreviews	Notes
Flow Cyt		1/20 - 1/100. ab171870 - Rabbit polyclonal IgG, is suitable for use as an isotype control with this antibody.
IHC-P		1/100 - 1/500. Perform heat mediated antigen retrieval with citrate buffer pH 6 before commencing with IHC staining protocol. Use at 1/50 - 1/200 with fluorescent detection methods.

Target

Function

Functions as a positive regulator of osteoclastogenesis. Cell surface receptor that signals via TYROBP. Regulates inflammatory responses. Acts as a key regulator of synovial injury and bone erosion during autoimmune joint inflammation (By similarity). Critical macrophage receptor for dengue virus serotypes 1-4. The binding of dengue virus to CLEC5A triggers signaling through the phosphorylation of TYROBP, this interaction does not result in viral entry, but stimulates proinflammatory cytokine release.

Tissue specificity

Expressed in peripheral blood monocytes and in the monocyte/macrophage cell lines U-937 and Mono-Mac-6, but not in cell lines of other origins. Expression is down-regulated when monocytes differentiate into dendritic cells.

Sequence similarities

Contains 1 C-type lectin domain.

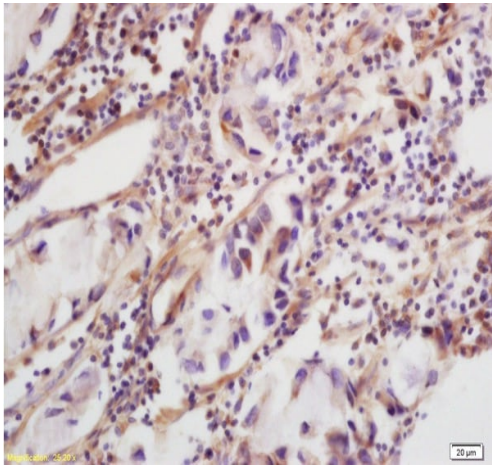
Post-translational modifications

N-glycosylated. Contains sialic acid residues.

Cellular localization

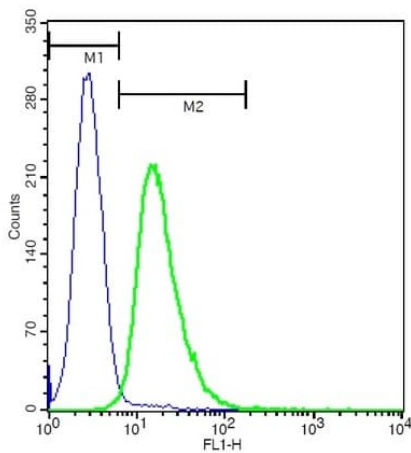
Cell membrane.

Images



Immunohistochemistry (Formalin/PFA-fixed paraffin-embedded sections) - Anti-CLEC5A antibody (ab203200)

Immunohistochemical analysis of formalin-fixed paraffin-embedded Human colon carcinoma tissue labeling CLEC5A with ab203200 at 1/200 dilution, followed by conjugation to the secondary antibody and DAB staining.



Flow Cytometry - Anti-CLEC5A antibody (ab203200)

Flow Cytometric analysis of U937 cells labeling CLEC5A using ab203200 at 1/50 dilution (green) followed by a FITC conjugated secondary, compared to control cells (blue).

Please note: All products are "FOR RESEARCH USE ONLY. NOT FOR USE IN DIAGNOSTIC PROCEDURES"

Our Abpromise to you: Quality guaranteed and expert technical support

- Replacement or refund for products not performing as stated on the datasheet
- Valid for 12 months from date of delivery
- Response to your inquiry within 24 hours
- We provide support in Chinese, English, French, German, Japanese and Spanish
- Extensive multi-media technical resources to help you
- We investigate all quality concerns to ensure our products perform to the highest standards

If the product does not perform as described on this datasheet, we will offer a refund or replacement. For full details of the Abpromise, please visit <https://www.abcam.com/abpromise> or contact our technical team.

Terms and conditions

- Guarantee only valid for products bought direct from Abcam or one of our authorized distributors