


Anti-CLIP170 antibody [mAbcam61830] ab61830

[1 References](#) [3 Images](#)

Overview

Product name	Anti-CLIP170 antibody [mAbcam61830]
Description	Mouse monoclonal [mAbcam61830] to CLIP170
Host species	Mouse
Tested applications	Suitable for: ICC/IF, WB, IHC-P Unsuitable for: Flow Cyt
Species reactivity	Reacts with: Human Predicted to work with: Mouse, Rat 
Immunogen	Recombinant fragment corresponding to Human CLIP170 aa 1100 to the C-terminus. (Peptide available as ab96632)
Positive control	WB: Human skeletal muscle tissue lysate. ICC/IF: HEK293 cells. IHC-P: Human Cervical carcinoma tissue.
General notes	<p>This antibody clone is manufactured by Abcam. If you require a custom buffer formulation or conjugation for your experiments, please contact orders@abcam.com.</p> <p>The Life Science industry has been in the grips of a reproducibility crisis for a number of years. Abcam is leading the way in addressing this with our range of recombinant monoclonal antibodies and knockout edited cell lines for gold-standard validation. Please check that this product meets your needs before purchasing.</p> <p>If you have any questions, special requirements or concerns, please send us an inquiry and/or contact our Support team ahead of purchase. Recommended alternatives for this product can be found below, along with publications, customer reviews and Q&As</p>

Properties

Form	Liquid
Storage instructions	Shipped at 4°C. Store at +4°C short term (1-2 weeks). Upon delivery aliquot. Store at -20°C or -80°C. Avoid freeze / thaw cycle.
Storage buffer	pH: 7.40 Preservative: 0.02% Sodium azide Constituents: PBS, 6.97% L-Arginine
Purity	Protein G purified

Clonality	Monoclonal
Clone number	mAbcam61830
Myeloma	Sp2/0-Ag14
Isotype	IgG1

Applications

The Abpromise guarantee Our **Abpromise guarantee** covers the use of ab61830 in the following tested applications. The application notes include recommended starting dilutions; optimal dilutions/concentrations should be determined by the end user.

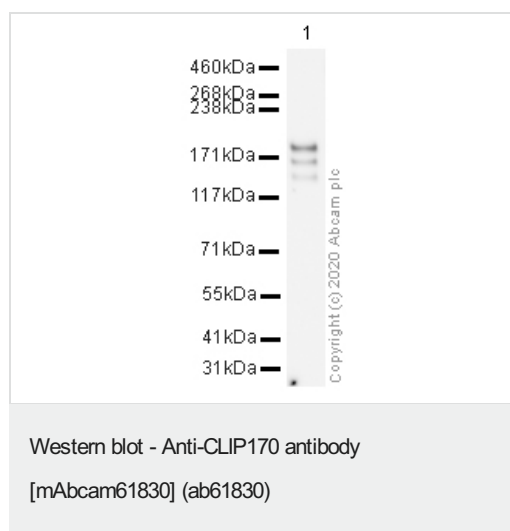
Application	Abreviews	Notes
ICC/IF		Use a concentration of 10 µg/ml.
WB		Use a concentration of 1 µg/ml. Detects a band of approximately 161 kDa (predicted molecular weight: 161 kDa).
IHC-P		Use at an assay dependent concentration.

Application notes Is unsuitable for Flow Cyt.

Target

Function	Seems to be a intermediate filament associated protein that links endocytic vesicles to microtubules.
Tissue specificity	Highly expressed in the Reed-Sternberg cells of Hodgkin disease.
Sequence similarities	Contains 2 CAP-Gly domains.
Cellular localization	Cytoplasm. Cytoplasm > cytoskeleton. Associated with the cytoskeleton. Localizes to the tips of microtubules.

Images



Anti-CLIP170 antibody [mAbcam61830] (ab61830) at 1 µg/ml +
Human Skeletal Muscle at 10 µg

Secondary

Goat polyclonal to Mouse IgG - H&L - Pre-Adsorbed (HRP) at
1/5000 dilution

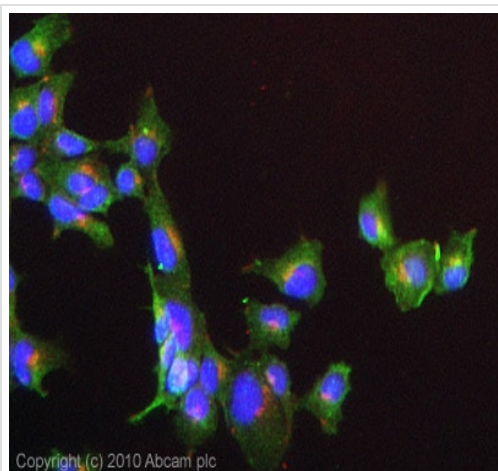
Predicted band size: 161 kDa

Observed band size: 150,161,190 kDa

Exposure time: 4 minutes

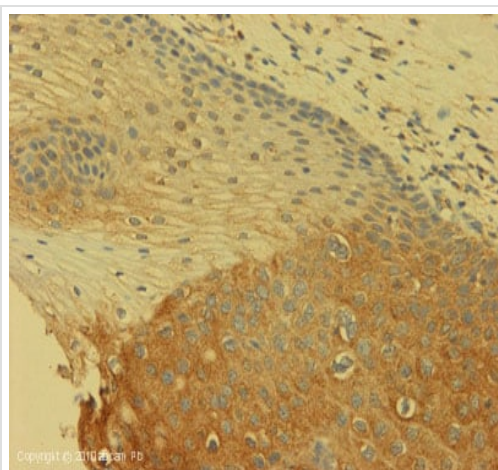
Blocking buffer: 3% Milk

Gel type: TA



Immunocytochemistry/ Immunofluorescence - Anti-CLIP170 antibody [mAbcam61830] (ab61830)

ICC/IF image of ab61830 stained Hek293 cells. The cells were 4% formaldehyde fixed (10 min) and then incubated in 1%BSA / 10% normal goat serum / 0.3M glycine in 0.1% PBS-Tween for 1h to permeabilise the cells and block non-specific protein-protein interactions. The cells were then incubated with the antibody ab61830 at 10µg/ml overnight at +4°C. The secondary antibody (green) was Alexa Fluor® 488 goat anti- mouse IgG (H+L) used at a 1/1000 dilution for 1h. Alexa Fluor® 594 WGA was used to label plasma membranes (red) at a 1/200 dilution for 1h. DAPI was used to stain the cell nuclei (blue) at a concentration of 1.43µM. This antibody also gave a positive result in HeLa, HepG2, and MCF-7 cell lines in PFA at 10ug/ml



Immunohistochemistry (Formalin/PFA-fixed paraffin-embedded sections) - Anti-CLIP170 antibody [mAbcam61830] (ab61830)

IHC image of Ab61830 staining in Human Cervical carcinoma formalin fixed paraffin embedded tissue section, performed on a Leica Bond™ system using the standard protocol F. The section was pre-treated using heat mediated antigen retrieval with sodium citrate buffer (pH6, epitope retrieval solution 1) for 20 mins. The section was then incubated with Ab61830, 5µg/ml, for 15 mins at room temperature and detected using an HRP conjugated compact polymer system. DAB was used as the chromogen. The section was then counterstained with haematoxylin and mounted with DPX.

For other IHC staining systems (automated and non-automated) customers should optimize variable parameters such as antigen retrieval conditions, primary antibody concentration and antibody incubation times.

Please note: All products are "FOR RESEARCH USE ONLY. NOT FOR USE IN DIAGNOSTIC PROCEDURES"

Our Abpromise to you: Quality guaranteed and expert technical support

- Replacement or refund for products not performing as stated on the datasheet
- Valid for 12 months from date of delivery
- Response to your inquiry within 24 hours

- We provide support in Chinese, English, French, German, Japanese and Spanish
- Extensive multi-media technical resources to help you
- We investigate all quality concerns to ensure our products perform to the highest standards

If the product does not perform as described on this datasheet, we will offer a refund or replacement. For full details of the Abpromise, please visit <https://www.abcam.com/abpromise> or contact our technical team.

Terms and conditions

- Guarantee only valid for products bought direct from Abcam or one of our authorized distributors