


Product datasheet

Anti-CLK1 antibody ab74044

★★★★☆ [2 Abreviews](#) [5 References](#) [2 Images](#)

Overview

Product name	Anti-CLK1 antibody
Description	Rabbit polyclonal to CLK1
Host species	Rabbit
Tested applications	Suitable for: WB, ICC/IF
Species reactivity	Reacts with: Human Predicted to work with: Mouse 
Immunogen	A synthesized peptide derived from the internal region of human CLK1.
Positive control	HUVEC cells and extracts from 293 cells.
General notes	<p>The Life Science industry has been in the grips of a reproducibility crisis for a number of years. Abcam is leading the way in addressing this with our range of recombinant monoclonal antibodies and knockout edited cell lines for gold-standard validation. Please check that this product meets your needs before purchasing.</p> <p>If you have any questions, special requirements or concerns, please send us an inquiry and/or contact our Support team ahead of purchase. Recommended alternatives for this product can be found below, along with publications, customer reviews and Q&As</p>

Properties

Form	Liquid
Storage instructions	Shipped at 4°C. Upon delivery aliquot and store at -20°C. Avoid freeze / thaw cycles.
Storage buffer	pH: 7.40 Preservative: 0.02% Sodium azide Constituents: 0.87% Sodium chloride, 50% Glycerol, PBS Without Mg ²⁺ and Ca ²⁺
Purity	Immunogen affinity purified
Purification notes	The antibody was affinity purified from rabbit antiserum by affinity chromatography using epitope specific immunogen.
Clonality	Polyclonal
Isotype	IgG

Applications

The Abpromise guarantee

Our **Abpromise guarantee** covers the use of ab74044 in the following tested applications.

The application notes include recommended starting dilutions; optimal dilutions/concentrations should be determined by the end user.

Application	Abreviews	Notes
WB	★★★★☆ (2)	1/500 - 1/1000. Predicted molecular weight: 57 kDa.
ICC/IF		1/500 - 1/1000.

Target

Function

Phosphorylates serine- and arginine-rich (SR) proteins of the spliceosomal complex may be a constituent of a network of regulatory mechanisms that enable SR proteins to control RNA splicing. Phosphorylates serines, threonines and tyrosines.

Sequence similarities

Belongs to the protein kinase superfamily. CMGC Ser/Thr protein kinase family. Lammer subfamily.

Contains 1 protein kinase domain.

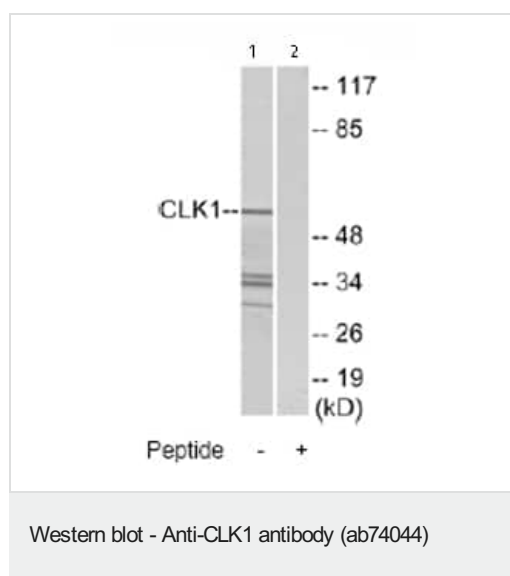
Post-translational modifications

Autophosphorylates on all three types of residues.

Cellular localization

Nucleus.

Images



All lanes : Anti-CLK1 antibody (ab74044) at 1/500 dilution

Lane 1 : Extracts from 293 cells

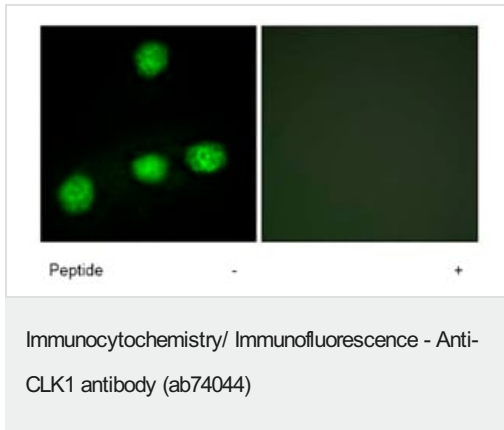
Lane 2 : Extracts from 293 cells with immunizing peptide at 5 µg

Lysates/proteins at 5 µg per lane.

Predicted band size: 57 kDa

Observed band size: 57 kDa

Additional bands at: 30 kDa, 34 kDa, 36 kDa. We are unsure as to the identity of these extra bands.



Immunofluorescence analysis of CLK1 in HUVEC cells, using ab74044 at a 1/500 dilution.

Left image: untreated.

Right image: treated with immunizing peptide.

Please note: All products are "FOR RESEARCH USE ONLY. NOT FOR USE IN DIAGNOSTIC PROCEDURES"

Our Abpromise to you: Quality guaranteed and expert technical support

- Replacement or refund for products not performing as stated on the datasheet
- Valid for 12 months from date of delivery
- Response to your inquiry within 24 hours
- We provide support in Chinese, English, French, German, Japanese and Spanish
- Extensive multi-media technical resources to help you
- We investigate all quality concerns to ensure our products perform to the highest standards

If the product does not perform as described on this datasheet, we will offer a refund or replacement. For full details of the Abpromise, please visit <https://www.abcam.com/abpromise> or contact our technical team.

Terms and conditions

- Guarantee only valid for products bought direct from Abcam or one of our authorized distributors