




## Product datasheet

# Anti-CLK2 antibody ab188141

[3 References](#) [6 Images](#)

### Overview

<b>Product name</b>	Anti-CLK2 antibody
<b>Description</b>	Rabbit polyclonal to CLK2
<b>Host species</b>	Rabbit
<b>Tested applications</b>	<b>Suitable for:</b> ICC/IF, WB, IHC-P
<b>Species reactivity</b>	<b>Reacts with:</b> Human <b>Predicted to work with:</b> Mouse 
<b>Immunogen</b>	Recombinant fragment corresponding to Human CLK2 aa 1-100. Database link: <a href="#">P49760</a> <div>  <a href="#">Run BLAST with</a>  <a href="#">Run BLAST with</a> </div>
<b>Positive control</b>	IHC-P: Human colon, testis, and skin tissues; WB: BeWo cell lysate; ICC/IF: U-2 OS cells.
<b>General notes</b>	<p>The Life Science industry has been in the grips of a reproducibility crisis for a number of years. Abcam is leading the way in addressing this with our range of recombinant monoclonal antibodies and knockout edited cell lines for gold-standard validation. Please check that this product meets your needs before purchasing.</p> <p>If you have any questions, special requirements or concerns, please send us an inquiry and/or contact our Support team ahead of purchase. Recommended alternatives for this product can be found below, along with publications, customer reviews and Q&amp;As</p>

### Properties

<b>Form</b>	Liquid
<b>Storage instructions</b>	Shipped at 4°C. Store at +4°C short term (1-2 weeks). Upon delivery aliquot. Store at -20°C long term. Avoid freeze / thaw cycle.
<b>Storage buffer</b>	pH: 7.20 Preservative: 0.02% Sodium azide Constituents: 59% PBS, 40% Glycerol
<b>Purity</b>	Immunogen affinity purified
<b>Clonality</b>	Polyclonal
<b>Isotype</b>	IgG

## Applications

### The Abpromise guarantee

Our **Abpromise guarantee** covers the use of ab188141 in the following tested applications.

The application notes include recommended starting dilutions; optimal dilutions/concentrations should be determined by the end user.

Application	Abreviews	Notes
ICC/IF		Use a concentration of 0.25 - 2 µg/ml.
WB		Use a concentration of 0.04 - 0.4 µg/ml. Predicted molecular weight: 60 kDa.
IHC-P		1/50 - 1/200. Perform heat mediated antigen retrieval with citrate buffer pH 6 before commencing with IHC staining protocol.

## Target

### Function

Phosphorylates serine- and arginine-rich (SR) proteins of the spliceosomal complex may be a constituent of a network of regulatory mechanisms that enable SR proteins to control RNA splicing. Phosphorylates serines, threonines and tyrosines.

### Sequence similarities

Belongs to the protein kinase superfamily. CMGC Ser/Thr protein kinase family. Lammer subfamily.

Contains 1 protein kinase domain.

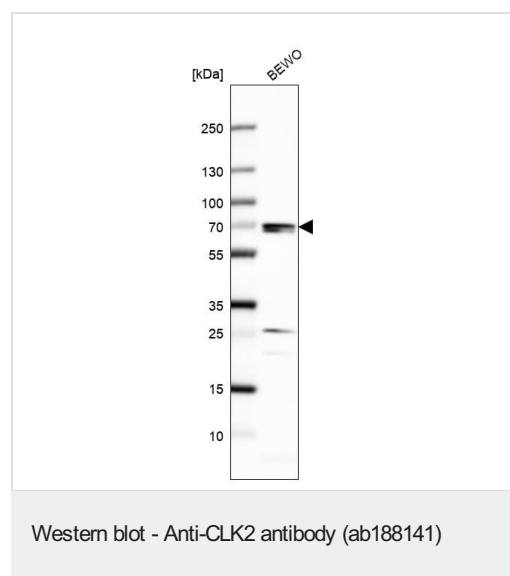
### Post-translational modifications

Autophosphorylates on all three types of residues.

### Cellular localization

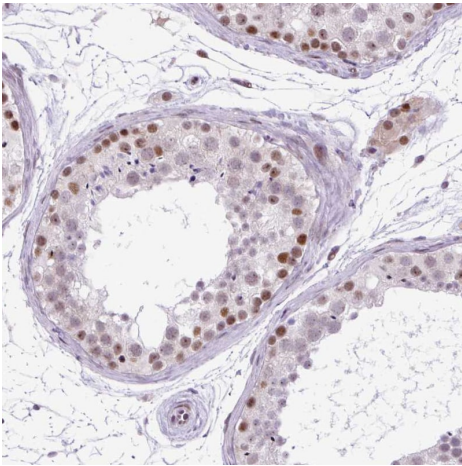
Nucleus.

## Images



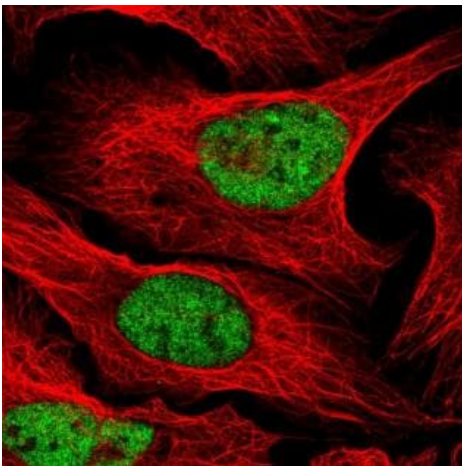
Anti-CLK2 antibody (ab188141) at 0.4 µg/ml + BeWo (human placenta choriocarcinoma cell line) cell lysate

**Predicted band size:** 60 kDa



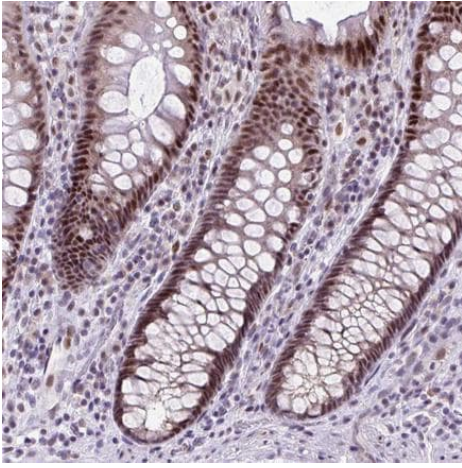
Immunohistochemistry (Formalin/PFA-fixed paraffin-embedded sections) - Anti-CLK2 antibody (ab188141)

Immunohistochemistry (Formalin/PFA-fixed paraffin-embedded sections) analysis of human testis tissue labelling CLK2 with ab188141 at 1/200 dilution. Heat mediated antigen retrieval performed with citrate buffer pH 6 before commencing with IHC staining protocol.



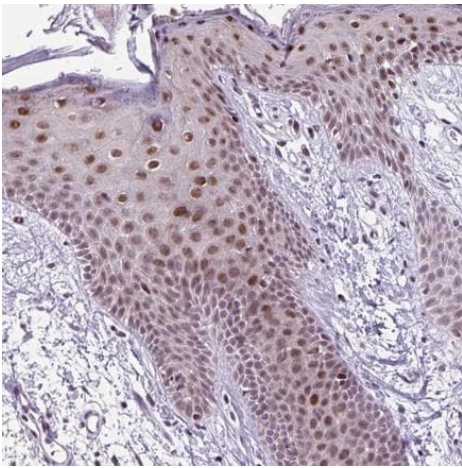
Immunocytochemistry/ Immunofluorescence - Anti-CLK2 antibody (ab188141)

Immunocytochemical analysis of PFA/Triton X-100 fixed U-2 OS cells labeling CLK2 with ab188141 at 2 µg/ml.



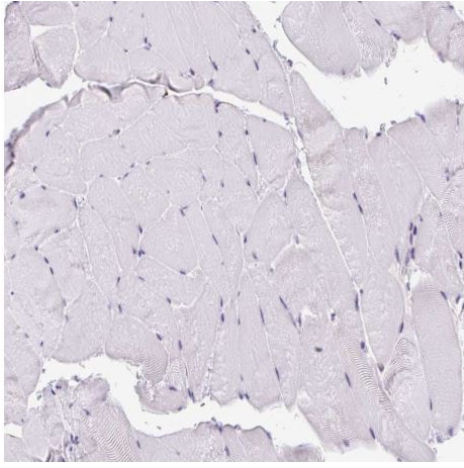
Immunohistochemistry (Formalin/PFA-fixed paraffin-embedded sections) - Anti-CLK2 antibody (ab188141)

Paraffin embedded human colon tissue stained for CLK2 using ab188141 at 1/200 dilution in immunohistochemical analysis.



Immunohistochemistry (Formalin/PFA-fixed paraffin-embedded sections) - Anti-CLK2 antibody (ab188141)

Paraffin embedded human skin tissue stained for CLK2 using ab188141 at 1/200 dilution in immunohistochemical analysis.



Immunohistochemistry (Formalin/PFA-fixed paraffin-embedded sections) - Anti-CLK2 antibody (ab188141)

Paraffin embedded human skeletal muscle tissue stained for CLK2 using ab188141 at 1/200 dilution in immunohistochemical analysis. Shows no positivity in myocytes cells as expected.

**Please note:** All products are "FOR RESEARCH USE ONLY. NOT FOR USE IN DIAGNOSTIC PROCEDURES"

#### Our Abpromise to you: Quality guaranteed and expert technical support

---

- Replacement or refund for products not performing as stated on the datasheet
- Valid for 12 months from date of delivery
- Response to your inquiry within 24 hours
- We provide support in Chinese, English, French, German, Japanese and Spanish
- Extensive multi-media technical resources to help you
- We investigate all quality concerns to ensure our products perform to the highest standards

If the product does not perform as described on this datasheet, we will offer a refund or replacement. For full details of the Abpromise, please visit <https://www.abcam.com/abpromise> or contact our technical team.

#### Terms and conditions

---

- Guarantee only valid for products bought direct from Abcam or one of our authorized distributors