




Anti-CLLD8/SETDB2 antibody ab13712

[2 References](#) [1 Image](#)

Overview

Product name	Anti-CLLD8/SETDB2 antibody
Description	Goat polyclonal to CLLD8/SETDB2
Host species	Goat
Specificity	This antibody has been shown to detect SETDB2 in overexpression cell extracts.
Tested applications	Suitable for: WB
Species reactivity	Reacts with: Human Predicted to work with: Mouse, Rat, Cow, Dog, Pig 
Immunogen	Synthetic peptide corresponding to Human CLLD8/SETDB2 aa 1-100 (N terminal). (NP_114121.2; NP_001153780.1) Database link: Q96T68 <div>  Run BLAST with  Run BLAST with </div>
Positive control	WB: HeLa nuclear lysate.
General notes	<p>The Life Science industry has been in the grips of a reproducibility crisis for a number of years. Abcam is leading the way in addressing this with our range of recombinant monoclonal antibodies and knockout edited cell lines for gold-standard validation. Please check that this product meets your needs before purchasing.</p> <p>If you have any questions, special requirements or concerns, please send us an inquiry and/or contact our Support team ahead of purchase. Recommended alternatives for this product can be found below, along with publications, customer reviews and Q&As</p>

Properties

Form	Liquid
Storage instructions	Shipped at 4°C. Upon delivery aliquot and store at -20°C. Avoid freeze / thaw cycles.
Storage buffer	pH: 7.3 Preservative: 0.02% Sodium azide Constituents: 99% Tris buffered saline, 0.5% BSA
Purity	Immunogen affinity purified
Purification notes	Purified from goat serum by ammonium sulphate precipitation followed by antigen affinity chromatography using the immunizing peptide.

Clonality	Polyclonal
Isotype	IgG

Applications

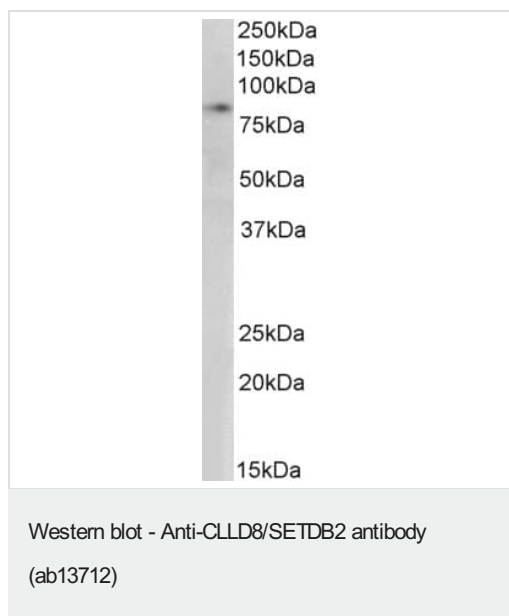
The Abpromise guarantee Our **Abpromise guarantee** covers the use of ab13712 in the following tested applications. The application notes include recommended starting dilutions; optimal dilutions/concentrations should be determined by the end user.

Application	Abreviews	Notes
WB		Use a concentration of 0.3 - 1 µg/ml. Detects a band of approximately 80 kDa (predicted molecular weight: 83 kDa). 1 hour primary incubation is recommended for this product.

Target

Function	Histone methyltransferase involved in left-right axis specification in early development and mitosis. Specifically trimethylates 'Lys-9' of histone H3 (H3K9me3). H3K9me3 is a specific tag for epigenetic transcriptional repression that recruits HP1 (CBX1, CBX3 and/or CBX5) proteins to methylated histones. Contributes to H3K9me3 in both the interspersed repetitive elements and centromere-associated repeats. Plays a role in chromosome condensation and segregation during mitosis.
Tissue specificity	Ubiquitous. Highest expression in heart, testis and ovary.
Sequence similarities	Belongs to the histone-lysine methyltransferase family. Contains 1 MBD (methyl-CpG-binding) domain. Contains 1 pre-SET domain. Contains 1 SET domain.
Cellular localization	Nucleus. Chromosome.

Images



Anti-CLLD8/SETDB2 antibody (ab13712) at 0.3 µg/ml + HeLa (Human epithelial cell line from cervix adenocarcinoma) nuclear lysate at 35 µg

Predicted band size: 83 kDa

Detected by chemiluminescence.

RIPA buffer.

Please note: All products are "FOR RESEARCH USE ONLY. NOT FOR USE IN DIAGNOSTIC PROCEDURES"

Our Abpromise to you: Quality guaranteed and expert technical support

- Replacement or refund for products not performing as stated on the datasheet
- Valid for 12 months from date of delivery
- Response to your inquiry within 24 hours
- We provide support in Chinese, English, French, German, Japanese and Spanish
- Extensive multi-media technical resources to help you
- We investigate all quality concerns to ensure our products perform to the highest standards

If the product does not perform as described on this datasheet, we will offer a refund or replacement. For full details of the Abpromise, please visit <https://www.abcam.com/abpromise> or contact our technical team.

Terms and conditions

- Guarantee only valid for products bought direct from Abcam or one of our authorized distributors