

Anti-CLNS1A/CLCI antibody [2187C2α] ab53667

[1 Image](#)

Overview

Product name	Anti-CLNS1A/CLCI antibody [2187C2α]
Description	Mouse monoclonal [2187C2α] to CLNS1A/CLCI
Host species	Mouse
Tested applications	Suitable for: WB
Species reactivity	Reacts with: Human
Immunogen	Recombinant fragment corresponding to CLNS1A/CLCI (C terminal).
General notes	<p>The Life Science industry has been in the grips of a reproducibility crisis for a number of years. Abcam is leading the way in addressing this with our range of recombinant monoclonal antibodies and knockout edited cell lines for gold-standard validation. Please check that this product meets your needs before purchasing.</p> <p>If you have any questions, special requirements or concerns, please send us an inquiry and/or contact our Support team ahead of purchase. Recommended alternatives for this product can be found below, along with publications, customer reviews and Q&As</p>

Properties

Form	Liquid
Storage instructions	Shipped at 4°C. Store at +4°C short term (1-2 weeks). Upon delivery aliquot. Store at -20°C long term.
Storage buffer	<p>pH: 7.40</p> <p>Preservative: 0.05% Sodium azide</p> <p>Constituents: 0.0225% Potassium chloride, 0.0204% Monobasic dihydrogen potassium phosphate, 0.1136% Dibasic monohydrogen sodium phosphate, 1% BSA, 0.03% Potassium phosphate, 0.812% Sodium chloride, 0.1312% Sodium phosphate</p>
Purity	Protein G purified
Purification notes	ab53667 was purified using protein G column chromatography from culture supernatant of hybridoma cultured in a medium containing bovine IgG-depleted (approximately 95%) fetal bovine serum.
Clonality	Monoclonal
Clone number	2187C2α
Isotype	IgG1

Applications

The Abpromise guarantee

Our **Abpromise guarantee** covers the use of ab53667 in the following tested applications.

The application notes include recommended starting dilutions; optimal dilutions/concentrations should be determined by the end user.

Application	Abreviews	Notes
WB		Use at an assay dependent concentration. Predicted molecular weight: 26 kDa.

Target

Function

The interaction with Sm proteins inhibits their assembly on U RNA and interferes with snRNP biogenesis. Inhibits the binding of survival motor neuron protein (SMN) to Sm proteins. May participate in cellular volume control by activation of a swelling-induced chloride conductance pathway.

Sequence similarities

Belongs to the pICln family.

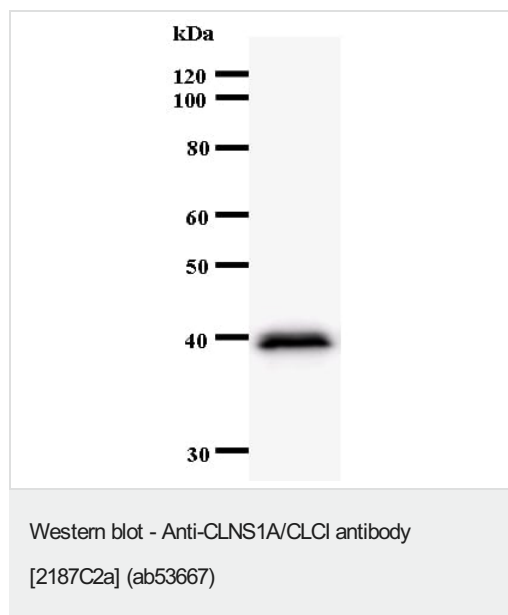
Post-translational modifications

Phosphorylated upon DNA damage, probably by ATM or ATR.

Cellular localization

Cytoplasm. Nucleus. Cytoplasm > cytoskeleton. A small fraction is also associated with the cytoskeleton.

Images



Anti-CLNS1A/CLCI antibody [2187C2a] (ab53667) + Immunized recombinant protein

Predicted band size: 26 kDa

Observed band size: 39 kDa

Please note: All products are "FOR RESEARCH USE ONLY. NOT FOR USE IN DIAGNOSTIC PROCEDURES"

Our Abpromise to you: Quality guaranteed and expert technical support

- Replacement or refund for products not performing as stated on the datasheet
- Valid for 12 months from date of delivery
- Response to your inquiry within 24 hours

- We provide support in Chinese, English, French, German, Japanese and Spanish
- Extensive multi-media technical resources to help you
- We investigate all quality concerns to ensure our products perform to the highest standards

If the product does not perform as described on this datasheet, we will offer a refund or replacement. For full details of the Abpromise, please visit <https://www.abcam.com/abpromise> or contact our technical team.

Terms and conditions

- Guarantee only valid for products bought direct from Abcam or one of our authorized distributors