




Product datasheet

Anti-CLNS1A/CLCI antibody - C-terminal ab192907

[4 Images](#)

Overview

Product name	Anti-CLNS1A/CLCI antibody - C-terminal
Description	Rabbit polyclonal to CLNS1A/CLCI - C-terminal
Host species	Rabbit
Tested applications	Suitable for: WB, IP, IHC-P
Species reactivity	Reacts with: Mouse, Human Predicted to work with: Rat, Sheep, Rabbit, Goat, Horse, Cow, Dog, Pig, Xenopus laevis, Chinese hamster, Orangutan 
Immunogen	<p>Synthetic peptide within Human CLNS1A/CLCI aa 150 to the C-terminus (C terminal). The exact immunogen sequence used to generate this antibody is proprietary information. If additional detail on the immunogen is needed to determine the suitability of the antibody for your needs, please contact our Scientific Support team to discuss your requirements. (NP_001284.1).</p> <p>Database link: <u>P54105</u></p> <div>  <u>Run BLAST with</u>  <u>Run BLAST with</u> </div>
Positive control	HeLa, 293T, Jurkat, TCMK-1 and NIH3T3 whole cell lysates.
General notes	<p>The Life Science industry has been in the grips of a reproducibility crisis for a number of years. Abcam is leading the way in addressing this with our range of recombinant monoclonal antibodies and knockout edited cell lines for gold-standard validation. Please check that this product meets your needs before purchasing.</p> <p>If you have any questions, special requirements or concerns, please send us an inquiry and/or contact our Support team ahead of purchase. Recommended alternatives for this product can be found below, along with publications, customer reviews and Q&As</p>

Properties

Form	Liquid
Storage instructions	Shipped at 4°C. Store at +4°C short term (1-2 weeks). Upon delivery aliquot. Store at -20°C long term. Avoid freeze / thaw cycle.
Storage buffer	<p>pH: 7</p> <p>Preservative: 0.09% Sodium azide</p> <p>Constituent: 99% Tris citrate/phosphate</p> <p>pH 7 to 8</p>

Purity	Immunogen affinity purified
Purification notes	ab192907 was affinity purified using an epitope specific to CLNS1A/CLCI immobilized on solid support
Clonality	Polyclonal
Isotype	IgG

Applications

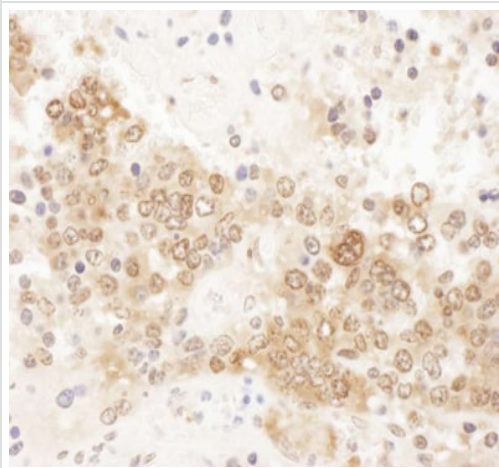
The Abpromise guarantee Our **Abpromise guarantee** covers the use of ab192907 in the following tested applications. The application notes include recommended starting dilutions; optimal dilutions/concentrations should be determined by the end user.

Application	Abreviews	Notes
WB		1/1000 - 1/2000. Predicted molecular weight: 26 kDa.
IP		Use at 2-10 µg/mg of lysate.
IHC-P		1/1000 - 1/5000.

Target

Function	The interaction with Sm proteins inhibits their assembly on U RNA and interferes with snRNP biogenesis. Inhibits the binding of survival motor neuron protein (SMN) to Sm proteins. May participate in cellular volume control by activation of a swelling-induced chloride conductance pathway.
Sequence similarities	Belongs to the pICln family.
Post-translational modifications	Phosphorylated upon DNA damage, probably by ATM or ATR.
Cellular localization	Cytoplasm. Nucleus. Cytoplasm > cytoskeleton. A small fraction is also associated with the cytoskeleton.

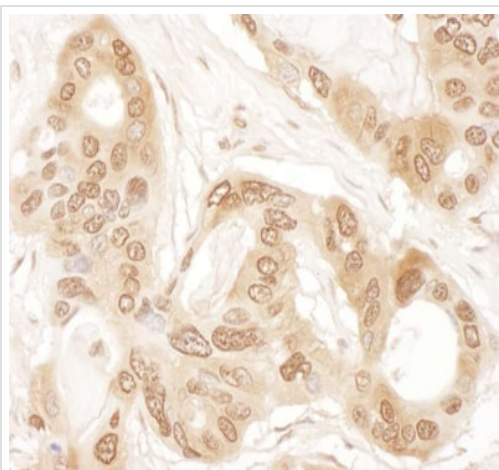
Images



Immunohistochemistry (Formalin/PFA-fixed paraffin-embedded sections) - Anti-CLNS1A/CLCI antibody - C-terminal (ab192907)

ab192907 staining CLNS1A/CLCI in mouse tetratoma tissue sections. Primary antibody was used at a dilution of 1/1000.

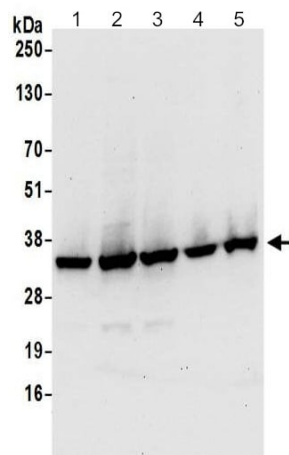
Counterstain: Hematoxylin (blue).



Immunohistochemistry (Formalin/PFA-fixed paraffin-embedded sections) - Anti-CLNS1A/CLCI antibody - C-terminal (ab192907)

ab192907 staining CLNS1A/CLCI in human ovarian carcinoma tissue sections. Primary antibody used at a dilution of 1/1000.

Counterstain: Hematoxylin (blue).



Western blot - Anti-CLNS1A/CLCI antibody - C-terminal (ab192907)

All lanes : Anti-CLNS1A/CLCI antibody - C-terminal (ab192907) at 0.1 µg/ml

Lane 1 : HeLa whole cell lysate

Lane 2 : 293T whole cell lysate

Lane 3 : Jurkat whole cell lysate

Lane 4 : TCMK-1 whole cell lysate

Lane 5 : NIH3T3 whole cell lysate

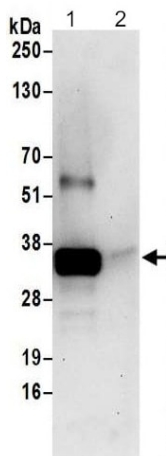
Lysates/proteins at 50 µg per lane.

Developed using the ECL technique.

Predicted band size: 26 kDa

Exposure time: 30 seconds

Lysates prepared using NETN lysis buffer.



Immunoprecipitation - Anti-CLNS1A/CLCI antibody - C-terminal (ab192907)

Detection of CLNS1A/CLCI in immunoprecipitates of 293T whole cell lysate prepared using NETN lysis buffer (1 mg for IP, 20% of IP loaded) using ab192907 at 6 µg/mg lysate for IP (Lane 1) and at 1 µg/ml for subsequent Western blot detection. Lane 2 represents control IgG IP.

Detection: Chemiluminescence with an exposure time of 30 seconds.

Please note: All products are "FOR RESEARCH USE ONLY. NOT FOR USE IN DIAGNOSTIC PROCEDURES"

Our Abpromise to you: Quality guaranteed and expert technical support

- Replacement or refund for products not performing as stated on the datasheet
- Valid for 12 months from date of delivery
- Response to your inquiry within 24 hours

- We provide support in Chinese, English, French, German, Japanese and Spanish
- Extensive multi-media technical resources to help you
- We investigate all quality concerns to ensure our products perform to the highest standards

If the product does not perform as described on this datasheet, we will offer a refund or replacement. For full details of the Abpromise, please visit <https://www.abcam.com/abpromise> or contact our technical team.

Terms and conditions

- Guarantee only valid for products bought direct from Abcam or one of our authorized distributors