




# Anti-Cofilin 1 + 2 antibody ab131519

[3 References](#) [3 Images](#)

### Overview

<b>Product name</b>	Anti-Cofilin 1 + 2 antibody
<b>Description</b>	Rabbit polyclonal to Cofilin 1 + 2
<b>Host species</b>	Rabbit
<b>Tested applications</b>	<b>Suitable for:</b> WB, IHC-P, ICC/IF
<b>Species reactivity</b>	<b>Reacts with:</b> Mouse, Human <b>Predicted to work with:</b> Rat 
<b>Immunogen</b>	Synthetic peptide conjugated to KLH, corresponding to a region around amino acids 86-90 (ATYET) of Human Cofilin 1 + 2 (NP_005498.1, NP_068733.1). <a href="#"> Run BLAST with</a> <a href="#"> Run BLAST with</a>
<b>Positive control</b>	Methanol-fixed HeLa cells; MDA cell extract; Human breast carcinoma tissue
<b>General notes</b>	<p>The Life Science industry has been in the grips of a reproducibility crisis for a number of years. Abcam is leading the way in addressing this with our range of recombinant monoclonal antibodies and knockout edited cell lines for gold-standard validation. Please check that this product meets your needs before purchasing.</p> <p>If you have any questions, special requirements or concerns, please send us an inquiry and/or contact our Support team ahead of purchase. Recommended alternatives for this product can be found below, along with publications, customer reviews and Q&amp;As</p>

### Properties

<b>Form</b>	Liquid
<b>Storage instructions</b>	Shipped at 4°C. Store at -20°C. Stable for 12 months at -20°C.
<b>Storage buffer</b>	pH: 7.40 Preservative: 0.02% Sodium azide Constituents: 49% PBS, 0.88% Sodium chloride, 50% Glycerol (glycerin, glycerine)  PBS without Mg <sup>2+</sup> and Ca <sup>2+</sup>
<b>Purity</b>	Immunogen affinity purified
<b>Clonality</b>	Polyclonal

Isotype

IgG

## Applications

### The Abpromise guarantee

Our **Abpromise guarantee** covers the use of ab131519 in the following tested applications.

The application notes include recommended starting dilutions; optimal dilutions/concentrations should be determined by the end user.

Application	Abreviews	Notes
WB		1/500 - 1/1000. Predicted molecular weight: 19 kDa.
IHC-P		1/100 - 1/200.
ICC/IF		1/50 - 1/100.

## Target

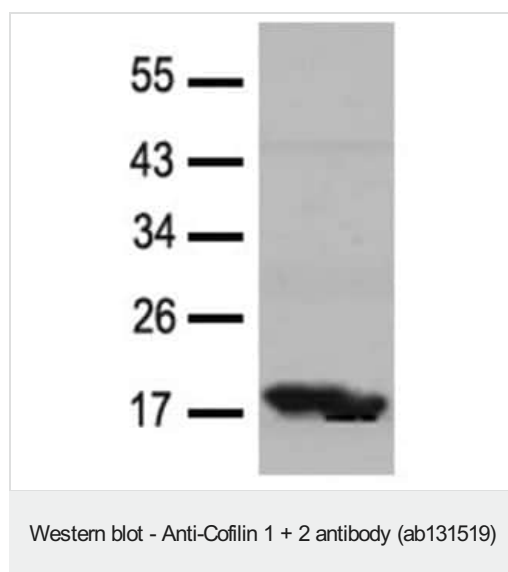
### Relevance

Cofilin 1: Binds to F-actin and exhibits pH-sensitive F-actin depolymerizing activity. Regulates actin cytoskeleton dynamics. Important for normal progress through mitosis and normal cytokinesis. Plays a role in the regulation of cell morphology and cytoskeletal organization. Cofilin 2: Controls reversibly actin polymerization and depolymerization in a pH-sensitive manner. It has the ability to bind G- and F-actin in a 1:1 ratio of cofilin to actin. It is the major component of intranuclear and cytoplasmic actin rods.

### Cellular localization

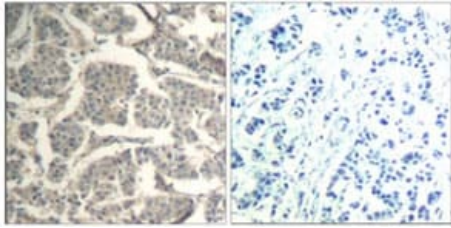
Cofilin 1: Nucleus matrix. Cytoplasm, cytoskeleton. Cell projection, ruffle membrane; Peripheral membrane protein; Cytoplasmic side. Cell projection, lamellipodium membrane; Peripheral membrane protein; Cytoplasmic side. Note: Colocalizes with the actin cytoskeleton in membrane ruffles and lamellipodia. Detected at the cleavage furrow and contractile ring during cytokinesis. Almost completely in nucleus in cells exposed to heat shock or 10% dimethyl sulfoxide. Cofilin 2: Nucleus matrix. Cytoplasm, cytoskeleton

## Images



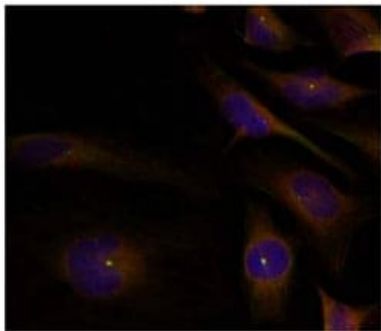
Anti-Cofilin 1 + 2 antibody (ab131519) at 1/500 dilution + MDA cell extract

**Predicted band size:** 19 kDa



Immunohistochemistry (Formalin/PFA-fixed paraffin-embedded sections) - Anti-Cofilin 1 + 2 antibody (ab131519)

Immunohistochemical analysis of paraffin-embedded Human breast carcinoma tissue labelling Cofilin 1 + 2 with ab131519 at 1/50 dilution. Right panel was preincubated with blocking peptide.



Immunocytochemistry/ Immunofluorescence - Anti-Cofilin 1 + 2 antibody (ab131519)

Immunofluorescent analysis of methanol-fixed HeLa cells labelling Cofilin 1 + 2 with ab131519 at 1/100 dilution.

**Please note:** All products are "FOR RESEARCH USE ONLY. NOT FOR USE IN DIAGNOSTIC PROCEDURES"

### Our Abpromise to you: Quality guaranteed and expert technical support

- Replacement or refund for products not performing as stated on the datasheet
- Valid for 12 months from date of delivery
- Response to your inquiry within 24 hours
- We provide support in Chinese, English, French, German, Japanese and Spanish
- Extensive multi-media technical resources to help you
- We investigate all quality concerns to ensure our products perform to the highest standards

If the product does not perform as described on this datasheet, we will offer a refund or replacement. For full details of the Abpromise, please visit <https://www.abcam.com/abpromise> or contact our technical team.

### Terms and conditions

- Guarantee only valid for products bought direct from Abcam or one of our authorized distributors